

**IDIONYX LIEFTINCKI SPEC. NOV. FROM ZHEJIANG, PEOPLE'S
REPUBLIC OF CHINA (ANISOPTERA: CORDULIIDAE)**

Wen-bao ZHOU

Zhejiang Museum, Hang Zhou, People's Republic of China

Received April 20, 1983 / Accepted August 3, 1983

I. Lieftincki sp. n. (♂ holotype, ♀ allotype: Huang-yang Mountain, Zhejiang, China; deposited in the Zhejiang Mus.) is described and illustrated. It is closely related to *I. carinata* Fraser and *I. optata* Selys.

DESCRIPTION

***IDIONYX LIEFTINCKI* SPEC. NOV.**

Figures 1-5

Material. — 1 ♂ (holotype), Huang-yang Mountain, Zhejiang, China, alt. 600 m, 20-VII-1983; 1 ♀ (allotype), same locality, alt. 1200 m, 1-IX-1982. The specimens are deposited in the Zhejiang Museum, Hang Zhou, China.

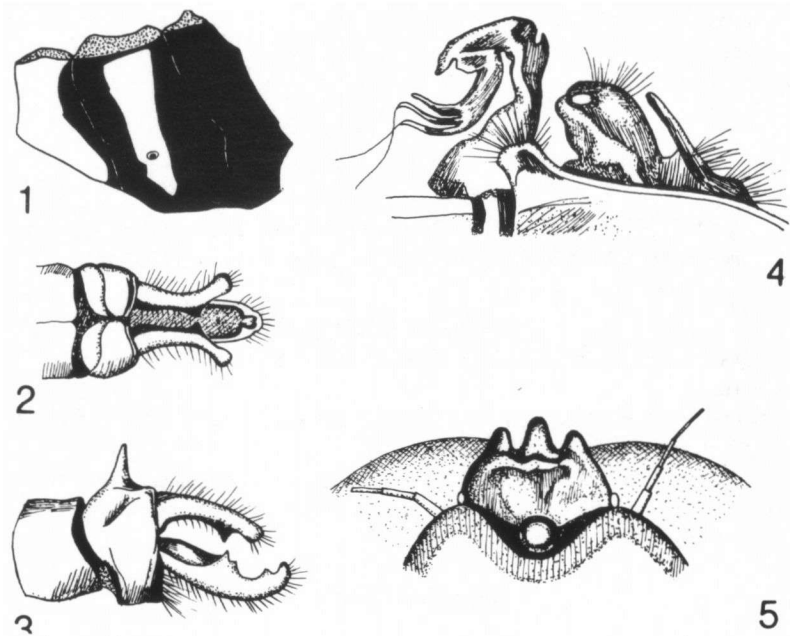
Male. — Total length 48 mm, abdomen (incl. cerci) 35 mm, hind wings 36 mm.

Head. Labium yellow with a brown centre; labrum, clypeus and genae black, anteclypeus with a yellow-brown centre; frons and vesicle dark metallic violet, occiput black.

Prothorax black, free margin of anterior and posterior lobe yellow. Pterothorax brilliant, metallic green, antehumeral yellow stripe absent, laterally yellow stripes as follows: an oblique stripe on the metepisternum and another stripe on the metepimeron. Legs dark reddish-brown, coxae yellow on the inner side, middle and posterior pairs of tibiae yellow.

Wings hyaline, deeply tinted with golden-yellow at bases as far as triangles; perostigma black, covering from 1½ to 2 cells, anal loop made up of 11 cells, hypetrigones $\frac{2-3}{1-1}$, 2 cubital nervure in the fore-wings, 1 in the hind, nodal index

$\frac{7}{10} | \frac{13}{9} | \frac{13}{9} | \frac{7}{8}$, membrane brown. Abdomen black, the ventro-lateral borders of



Figs 1-5. Structural characters of *Idionyx lieftincki* sp. n., holotype male (Figs 1-4), allotype female (Fig. 5): (1) diagram of pterothorax, right lateral view; — (2-3) anal appendages, dorsal and left lateral views resp.; — (4) genital organs, left lateral view; — (5) shape of vesicle.

segments 1-3 and 7-9 narrow yellow, segments 1-2 with a mid-dorsal yellow stripe, segment 10 with a long attenuated mid-dorsal spine directed.

Anal appendages black, superiors longer than segment 10, with a ventral spine. Inferior appendage twice as long as segment 10, its basal half lateral borders laminate and furnished with a spine at the middle, its apical half curled upward.

Female. — Total length 49 mm, abdomen (incl. cerci) 37 mm, hind wings 39 mm.

Closely similar to the male, but differing as follows. Labium and labrum brown, vesicle bears three tubercles, the middle the longest. Wings hyaline, palely fumed, dark fumed at the base, reaching to the triangles; anal loop made up of 13 cells.

DISCUSSION

In the structure of the male caudal appendages, the new species seems very

closely allied to the Asamese *I. optata* and to the South Chinese *I. carinata*. On account of its larger body size and thoracic pattern, it is assumed *I. Lieftincki* sp. n. represents the northernmost form of this group of the genus.

REFERENCES

- ASAHINA, S., 1965. The Odonata of Hongkong. *Kontyu* 33 (4): 493-506.
- FRASER, F.C., 1924. A survey of the Odonata (dragonfly) fauna of western India with special remarks on the genera *Macromia* and *Idionyx* and descriptions of thirty new species. *Rec. Indian Mus.* 26: 423-522, pls 25-27 excl.
- FRASER, F.C., 1926. A revision of the genus *Idionyx* Selys. *Rec. Indian Mus.* 28: 195-208, pls 8-10 excl.
- FRASER, F.C., 1936. *The fauna of British India. Odonata, Vol. 3.* Taylor & Francis, London.
- NEEDHAM, J.G., 1930. A manual of the dragonflies of China. *Zool. sin. (A)* 11: 1-344, pls 1-20, Index excl.
- RIS, F., 1912. Neue Libellen von Formosa, Südchina, Tonkin und den Philippinen. *Suppl. ent.* 1: 44-85, pls 3-5 excl.