

## Faunistical and biological records of some palaeartic Chalcidoidea

by

M. J. GIJSWIJT

The following list is an enumeration of localities of little known Chalcidoidea. For some species new data on hosts are given.

I am indebted to Dr. Z. BOUČEK, London, and Dr. M. W. R. DE VERE GRAHAM, Oxford, for checking the names of some species.

### TORYMIDAE

*Diomorus armatus* (Boh.). Netherlands: Velp (N.Br.), II.1944, from *Crabro capitosus* Shuck. (Hym.) in *Fraxinus* branch (leg. P. BENNO).

*Monodontomerus viciellae* (Walk.) (BOUČEK, 1970), Netherlands, Texel, VIII. 1900, from cocoons of *Zygaena filipendulae* (L.) (Lep.) (leg. F. M. VAN DER WULP).

*Monodontomerus minor* Först. Netherlands: Schoonoord (Dr.); from *Cryptus subquadratus* Thoms. (Hym.). Obviously reared from *Trichiosoma lucorum* (L.) (Hym.), vide G. VAN ROSSEM, 1969: 365.

*Megastigmus suspectus* Borries. Netherlands: Putten, 1930 and 1931; from seeds of the following *Abies* species: *cilicica*, *cephalonica*, *alba*, *veitchii*, *arizonica*, and *nobilis* (leg. J. TH. OUDEMANS).

*Megastigmus pinus* Parfitt. Netherlands: Putten and Wageningen, 1930; from seeds of *Abies magnifica* and *A. concolor* (leg. J. TH. OUDEMANS).

*Megastigmus spermotrophus* Wachtl. Netherlands: Lage Vuursche, from seeds of *Pseudotsuga mucronata* (leg. J. TH. OUDEMANS).

### EULOPHIDAE

*Euplectromorpha pannonica* Erdős (ERDÖS 1966, BOUČEK & ASKEW 1968). Netherlands: Geffen and Nederweert. The European species of this genus are supposed to be gregarious parasites in Zygaenidae (BOUČEK & ASKEW 1968). BOSMAN and DOOM (Rijksinstituut voor Natuurbeheer, Arnhem) have reared males and females of the parasite as a solitary species from second instar larvae of *Leucoma salicis* (L.) (Lep.). Adults emerging in September, were reared from caterpillars that were collected in August the same year. Pupation occurs outside the host. One adult was collected 25.VIII.1972.

*Elachertus pilosiscuta* Bouček (1971). W. Germany: (Nordrhein - Westfalen) Tecklenburg, V.1969.

*Elachertus pallidus* Askew (1964). France: Corsica, VIII.1971 (leg. A. C. & W. M. ELLIS); CSSR, 4 females in collection Narodní Muzeum v Praze.

*Dermatopelte budensis* Erdős & Nov. France: (Dept. Aisne) near Chemin des Dames, 28.VI and 2.VII.1971.

*Rhichnopelte crassicornis* (Nees). Netherlands: dunes near Vogelenzang, VI and XI.1942 (leg. G. BARENDRECHT); Hilversum, VII.1957.

*Dichatomus acerinus* Först. W. Germany (Schwäbische Jura), Urach, II.1971, from galls of *Pediaspis aceris* Först. (Hym.).

*Aulogymnus aceris* Först. From the same host and locality as the preceding species.

In 1963 ASKEW published his results in rearing parasites from *Pediaspis aceris* galls from France. He mentioned a few *Eurytoma* specimens. In my case some hundreds of galls delivered two male *Eurytoma*.

*Entedon euphorion* Walk. Netherlands: Heerde, VI.1968, from bark of oak with *Scolytus* species (Col.).

*Entedon philiscus* Walk. France, Cap Blanc Nez, V.1969; Netherlands: Stokkem (Z.L.), VI.1971; Hilversum, V.1965.

*Entedon insignis* Erdös. W. Germany (Nordrhein-Westfalen), Brochterbeck. From *Larinus sturnus* Schall. (Col.). Some of the specimens emerged after one, others after a second hibernating period; France: (Dept. Aisne) Pancy-Courtecon, VI.1971.

*Entedon fufius* Walk. (fig. 1). France: Cap Blanc Nez, V.1969; Netherlands: Ankeveen, on *Sisymbrium*, VI.1964; O. Flevoland, females in great quantities on

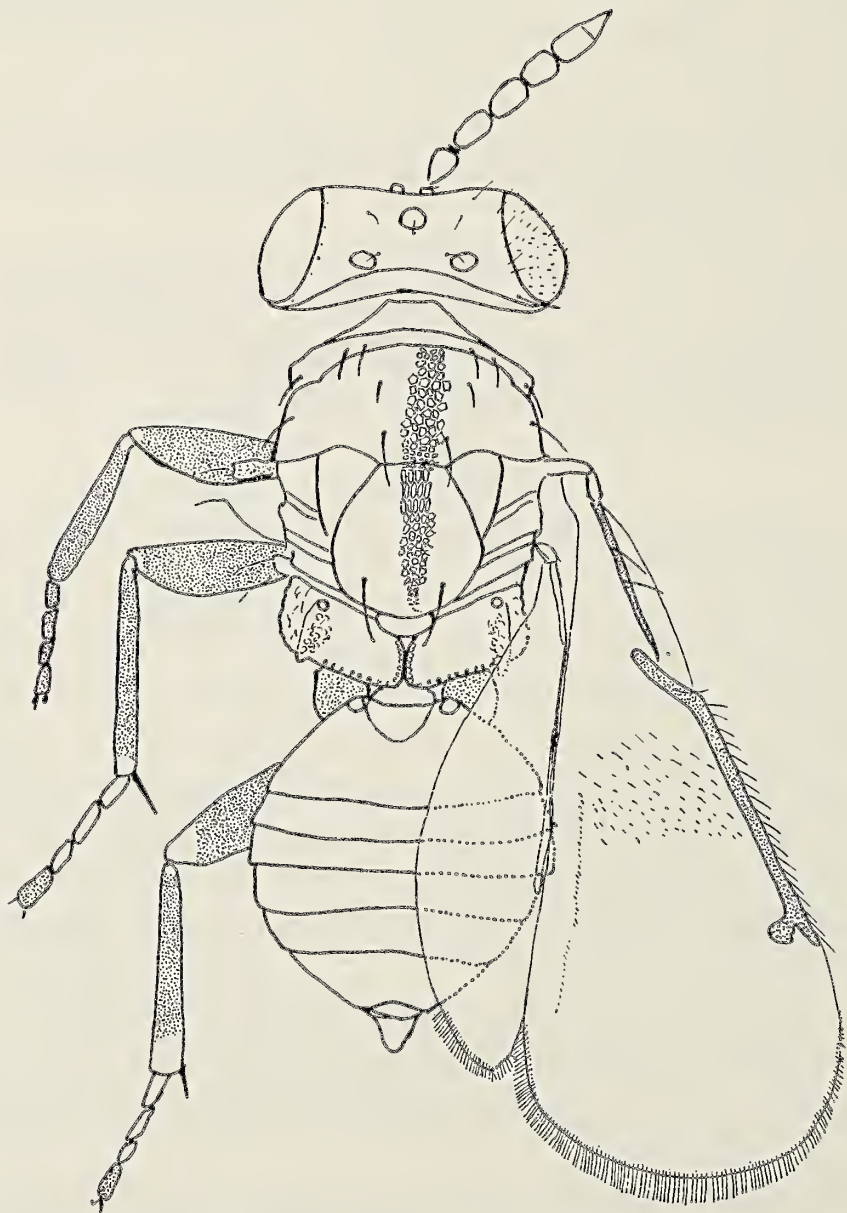


Fig. 1. *Entedon fufius* Walk., ♀ (sculpture and pilosity partly indicated).

*Rorippa*, VII.1962. I have long hesitated in naming these specimens. They resemble, according to the description, *Entedon montanus* Erdös; however, the wings of all specimens are waterclear and the abdomina are shorter. GRAHAM (1971) mentions *montanus* as a probable synonym of *fufius*. I have not seen the type of *fufius*, but GRAHAM's short description fits the male as well as the female.

*Achrysocharella chlorogaster* Erdös (EVENHUIS et al., 1971). Netherlands: Lienden, XII.1969, from *Nepticula madella* Stainton (leg. P. GRUYS), from *Nepticula pyri* (Glitz) and from *Nepticula tityrella* Stainton (both: leg. A. VAN FRANKENHUYZEN). All specimens were reared between VIII and XII.

*Asecodes lagus* (Walk.) (GRAHAM 1959). Netherlands: from several places. All typical specimens have been swept between VII and IX.

*Chrysocharis purpurea* Buk. (BOUČEK 1970). Netherlands: Thorn, V.1970. from overwintering cocoons of *Heterarthrus vagans* Fall. (Hym.) (leg. A. VAN FRANKENHUYZEN).

*Euderus brevicornis* Bouček. France: Corsica, VIII.1971 (leg. A. C. & W. M. ELLIS).

*Tetrastichus bruzzonei* Masi (det. DOMENICHINI). Netherlands: Holten, reared from pupae of *Cassida rubiginosa* Müller (Col.), adults emerging partly before, partly hibernation (leg. S. VAN HEYNSBERGEN).

*Tetrastichus anodaphes* (Walk.). Netherlands: 's Graveland, reared from galls of *Rhopalomyia ptarmica* Vallot (Dipt.). This species is an endoparasite in the larva of the gallmidge. It pupates inside the host. In the same galls lives another *Tetrastichus* as an ectoparasite on the same host. This *Tetrastichus* differs clearly from *anodaphes*. It has a shorter ovipositor (hardly exceeding the pygostylar bristles), the mid and hind tibiae are dark instead of testaceous, the clava is distinctly broader than the funicle. The thoracial sculpture is more shiny in contrast to the more dull appearance of *anodaphes*.

*Tetrastichus ulmi* Erdös. Netherlands: Oud-Loosdrecht, V.1969, from a *Polyporus* on oak.

*Hyperteles fagei* Graham. Netherlands: Hilversum, IX.1971, on *Fagus*.

#### PTEROMALIDAE

(For details concerning species mentioned here: GRAHAM 1969)

*Janssoniella ambigua* Graham. Netherlands: Hilversum, 2.I.1911 and 2-8.V. 1911, from *Polyporus* with larvae of *Cis* (Col.) and midges. Three females and one male.

*Halticoptera patellana* (Dalm.). Netherlands: Maartensdijk, 29.V.1905, from dipterous larva in leavestalk of *Pteridium*; in June, from a large mine in leave of *Pteridium* (leg. J. C. H. DE MEYERE); Aerdenhout, VI.1945 (leg. G. BARENDRECHT).

*Halticoptera smaragdina* (Curtis). Netherlands: Linschoten, 14.IX.1922, from Trypetide in *Pastinaca* (leg. J. C. H. DE MEYERE); O. Flevoland, summer 1962.

*Halticoptera collaris* (Walk.). Netherlands: Lage Vuursche and Maartensdijk, 29.V.1905, from dipterous larva in leavestalk of *Pteridium* (leg. J. C. H. DE MEYERE).

*Halticoptera crius* (Walk.). This species, recently re-established by ASKEW

(1972), seems to be a common one. France: Dept. Aisne, 30.VI.1971 and Dept. Jura, 13.VII.1971, in a vegetation of the Bromion type. Netherlands: Borssele, 28.VIII.1970 (leg. B. VAN AARTSEN); Bloemendaal, 9.VI.1961. About 20 specimens were reared from dipterous hosts collected in Amsterdam in the years between 1919 and 1923 by J. C. H. DE MEYERE: leafminer on *Cytisus laburnum*, *Agromyza spiraeae* Klth. on *Geum*, *Phytomyza minuscula* Gour. on *Aquilegia*, from a Trypetide in *Pyrethrum* (= probably *Chrysanthemum parthenium*). In these cases pupation occurred in June, while the parasites emerged one year later. Six parasites, reared from *Phytomyza cirsii* Hd., emerged about one month after pupation.

*Halticoptera mustela* (Walk.). W. Germany: (Schwäbische Jura) Westerheim; (Nordrh.-Westf.) Beverungen; (Rheinl.-Pfalz) Gerolstein. Males and females, swept in Mesobrometum vegetation.

*Halticoptera poreira* (Walk.). Netherlands: Ankeveen, 24.VII.1966. Males and females on Umbellifera in marshes.

*Halticoptera polita* (Walk.). Netherlands: Ankeveen, Naarden, Texel. In May and the beginning of June; all specimens in damp places.

*Thinodytes cyzicus* (Walk.). Netherlands: 's-Graveland, I and II.1965, from fruits of *Rhinanthus major*; Hilversum, Amsterdam and Texel from V—VIII. France: Dept. Jura in VII.

*Xestomnaster chrysochlorus* (Walk.). Netherlands: Amsterdam, from *Artemisia vulgaris* and from *Trypeta* in *Pyrethrum* (leg. J. C. H. DE MEYERE). The species seems to have at least two generations a year: from hosts collected in June, the adults emerged in August; from a host, collected in October, a female appeared in January.

*Seladerma geniculata* (Först.). Netherlands: Noordwijk, from *Phytomyza varipes* Maag (Dipt.) in seeds of *Rhinanthus* (leg. J. C. H. DE MEYERE); 's Graveland, 13.VI.1964, swept in large amounts from the plants from which I reared *Thinodytes cyzicus* (Walk.) one year later. France: (Dept. Aisne) Cerny, 2.VII.1971.

*Merismus splendens* Graham. Netherlands: Amsterdam, May 1921, from *Agromyza nigripes* Meig. in *Phragmites*; Winterswijk from a *Trypeta* in *Eupatorium cannabinum*, 1.VIII.1921 (leg. J. C. H. DE MEYERE).

*Staurothyreus cruciger* Graham. Netherlands: 's-Graveland, 25.IX.1951, Naarden, 21.VI.1965; W. Germany (Rheinl.-Pfalz) Nassau, 28.V.1963.

*Chlorocytus longiscapus* Graham. Netherlands: Driel, 31.V.1971 (leg. S. VAN HEYNSBERGEN).

*Chlorocytus ultonicus* Graham. France: Dept. Aisne, 30.VI.1971.

*Chlorocytus harmolitae* Bouček. Netherlands: Oostkapelle, 1.VI.1969 (leg. B. VAN AARTSEN).

*Habrocytus conformis* Graham. W. Germany: (Nordrh.-Westf.), Beverungen, 27-31.VII.1969.

*Habrocytus crassinervis* Thoms. Netherlands: Hooghalen, 23.VIII.1967, from fruits of *Campanula* (leg. van B. VAN AARTSEN).

*Habrocytus temporalis* Graham. Netherlands: Enschede, 11.V.1968, from

Trypetid in *Centaurea* (leg. B. VAN AARTSEN); France: Dept. Jura (800 m), 14.VII.1971.

*Habrocytus cardui* Erdös. Netherlands: Heerlen, 9.VIII.1933 (leg. G. BARENDRECHT).

*Habrocytus parietinae* Graham. Netherlands: Kunrade, 31.V-6.VI.1969 from *Oxya parietina* (L.) (Dipt.); Berg en Dal, 26.VI.1968; Echt, 16.VI.1968 (leg. B. VAN AARTSEN).

*Habrocytus tripolii* Graham. Netherlands: de Kaloot, 19.VIII.1968, from *Styilia plantaginis* (Hal.) (Dipt.) (leg. B. VAN AARTSEN); Scandinavia: from *Aster tripolium* (leg. D. O. WIJNANDS).

Observation. Nearly all species mentioned from the Netherlands are new to the Dutch fauna.

#### References

- ASKEW, R. R., 1963. Some Chalcidoidea reared from galls of *Pediaspis aceris* (Förster). *Entomologist* 96: 273—276.
- , 1964. On the biology and taxonomy of some European species of the genus *Elachertus* Spinola. *Bull. ent. Res.* 55: 53—58.
- BOUČEK, Z., 1970. Contribution to the knowledge of Italian Chalcidoidea, based mainly on a study at the institute of entomology in Turin, with descriptions of some new European species. *Memorie Soc. ent. ital.* 49: 35—102.
- , 1971. Descriptive and taxonomic notes on ten, mainly new, species of West Palaearctic Eulophidae. *Acta ent. Mus. natn. Pragae* 38: 525—543.
- BOUČEK, Z. & R. R. ASKEW, 1968. Index of Entomophagous Insects. Ed. Le François, Paris
- ERDÖS, J., 1951. Eulophidae novae. *Acta biol. hung.* 2: 169—235.
- , 1966. Nonnullae Eulophidae novae Hungaricae. *Annls hist.-nat. Mus. natn. hung.* 58: 395—420.
- EVENHUIS, H. H. et al., 1971. Ein Vergleich zwischen *Achrysocharella chlorogaster* und *Cirrospilus vittatus* als Parasiten des Apfelblattminierers *Stigmella malella* in den Niederlanden. *Z. angew. Ent.* 68: 32—40.
- GRAHAM, M. W. R. DE VERE, 1959. Keys to the British Genera and Species of Elachertinae, Eulophinae, Entedoninae, and Euderinae. *Trans. Soc. Br. Ent.* 13: 169—204.
- , 1969. The Pteromalidae of North-Western Europe. *Bull. Br. Mus. nat. Hist. Entomology*, Suppl. 16.
- , 1971. Revision of British Entedon, with descriptions of four new species. *Trans. R. ent. Soc. Lond.* 123: 313—358.
- ROSSEM, G. VAN, 1969. A revision of the genus *Cryptus* Fabricius s.str. in the western Palaearctic region, with keys to genera of Cryptinae and species of *Cryptus*. *Tijdschr. Ent.* 112: 299—374.

's-Graveland, Wessel ten Damstraat 2.

---

VERZOEK VAN DE SECRETARIS. Nu de voorbereidingen voor het klaarmaken van een nieuwe ledenlijst zover zijn, dat het manuscript haast naar de drukker kan, wil ik ieder vragen nog even na te zien of het specialisme dat voor hem vermeld wordt in de oude ledenlijst nog correct is. Wanneer dat niet het geval mocht zijn wordt u verzocht dit zo spoedig mogelijk te willen melden aan Dr. R. T. Simon Thomas, Mythsteelaan 32, Nunspeet, die bezig is de lijst persklaar te maken. — W. Hellinga.