

New forms of Dutch Butterflies

by

H. J. L. T. STAMMESHAUS

The last few years I have captured some interesting forms of butterflies of which no description could be found, and which are apparently new.

1. *Pieris rapae* L., f. **subtusmagnomaculata** nov. The discal spot or spots on the under side of the fore wings strongly enlarged.

Holotype: ♂, Amsterdam, 1.IX.1953.

2. *Pieris napi* L., f. **infrabasipuncta** nov. On the under side of the hind wings near the base between subcosta and radius a dark spot of the same colour as the suffusion along the nervures.

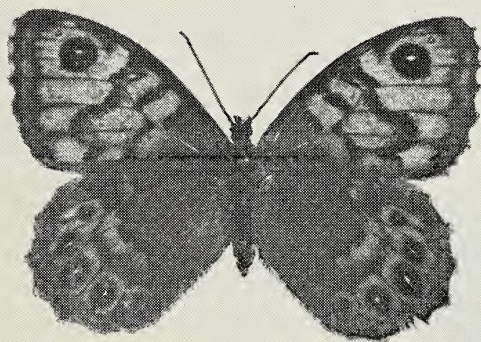
Holotype: ♂, Ede (Province of Guelderland), 5.V.1953.

Paratypes: ♂, 3.IV.1953, Munnikeburen (prov. of Friesland); ♀, 10.IV.1953, Amsterdam.

3. *Vanessa atalanta* L., f. **ocellata** nov. On the upper side of the wings in the red band a white spot, which is encircled with black.

Holotype: ♂, Amsterdam, 19.VII.1953.

Paratype: ♂ of the same locality and date.



Lasiommata megera L., f. **limbojuncta** nov.

Foto F. J. BUSSELMAN

4. *Lasiommata megera* L., f. **limbojuncta** nov. The eye-spots on the upper side of the hind wings are elongated and connected by a short dark line to the dark outer border.

Holotype: ♀, 14.VIII.1952, Amsterdam.

5. *Lasiommata megera* L., f. **latimargo** nov. The dark outer border on the upper side of the fore wings is strongly enlarged, so that it nearly reaches the apical ocellus.

Holotype: ♀, Amsterdam, 12.X.1953.

All type specimens are in my collection.

Amsterdam-O., Grensstraat 15.