

Additional distribution records of the Netherlands Heteroptera (Hem.), with a revised generic list of the Miridae

by

D. LESTON, F.R.E.S., F.Z.S.

In order to add to the distributional data given by RECLAIRE (1932), the following list of bugs collected during the period of the recent Congress is given. The opportunity is taken to amend the nomenclature of STICHEL (1925—38) and HEDICKE (1935) by alterations based, for the most part, on the works of VAN DUZEE (1917), KNIGHT (1941), CHINA (1943) and CARVALHO and LESTON (1952). A revised list of the Mirid genera is given, grouping them in tribes and subfamilies. Localities and dates are abbreviated: Groet, 19.VIII.51 G; Ankeveen, 21.VIII.51 A; Hoge Veluwe, 23.VIII.51 H; Bentveld, 25.VIII.51 B; Kennemerduinen, 26.VIII.51 K.

CYDNIDAE Billberg

Thyreocoris scarabaeoides Schr. B (1, in moss).

Aethus flavicornis F. B; K (very common). CHINA (1943) gives the synonymy: *Aethus* Dall. 1851 = *Cydnus* Fieb. et auctt. nec F.; *Cydnus* F. = *Brachypelta* A. & S. et auctt.

PENTATOMIDAE Leach

Odontoscelis fuliginosa L. K (3 nymphs only).

Sciocoris cursitans F. K.

Aelia acuminata L. H.

Pitedia juniperina L. H (5 imagines, 3 nymphs, on Juniper). CHINA points out the reasons for replacing *Chlorochroa* Stål by *Pitedia* Reuter¹).

P. pinicola Muls. H (1, on Pine). RECLAIRE (1932) gives only two previous records.

Dolycoris baccarum L. G (including nymphs); H. *Dolycorus* laps. cal. vide RECLAIRE.

Eurydema oleraceum L. B.

Elasmucha grisea L. H.

Cyphostethus tristriatus F. H (extraordinarily abundant on Juniper, many last-instar nymphs present).

Arma custos F. H (on Birch, many last-instar nymphs also present).

Eysarcoris punctatus L. B (1 nymph only). CHINA indicates the generic synonymy: *Eysarcoris* Hahn 1834 = *Rhacognathus* Fieb. et auctt.; *Stollia* Ellenr. = *Eysarcoris* auctt. nec Hahn.

COREIDAE Leach

Ceraleptus lividus Stein. G.

Rhopalus parumpunctatus Schill. G; H; B; K. CHINA points out: *Rhopalus* Schilling = *Corizus* Fieb. et auctt. nec Fall.; *Corizus* Fall. = *Therapha* A. & S.; *Brachycarenum* Fieb. = *Rhopalus* Osh. et auctt. nec Schill. (type, *tigrinus* Schill.).

Myrmus miriformis Fall. H; B.

Chorosoma schillingii Schill. G (very abundant); H.

¹) RECLAIRE (1951, Tijdschr. Ent. 93: 3) quotes STOKES on the biology of this species; it is almost certain that STOKES misidentified a specimen of *Palomena prasina* L.

LYGAEIDAE Schilling

*Nysius*¹⁾ (*Macroparius*) *thymi* Wolff. K.

N. (M.) lineatus Costa. H.

Cymus claviculus Fall. G (in *Juncus* sp.)

Geocoris grylloides L. B.

Megalonotus praetextus H.-S. K. CHINA gives: *Megalonotus* Fieb. = *Rhyparochromus* Curtis nec Hahn; *Rhyparochromus* Hahn = *Aphanus* Dist. et auctt. nec Lap.; *Aphanus* Lap. = *Calyptonotus* D. & S. These changes involve much alteration to catalogues and works in current use but, as CHINA has gone to the original sources, should lead now to stability.

M. chiragra F. H.

Macrodema micropterum Curt. H.

Pionosomus varius Wolff. B; K (very common at both localities).

Plinthisus pusillus Schltz. B (1 only). CHINA indicates the first valid use of this generic name to be by STEPHENS 1829. FIEBER should be deleted as the author thereof.

P. brevipennis Latr. B.

Stygnocoris pedestris Fall. G; H; B (including a pair in cop.); K.

S. fuliginus Geoff. G; B; K.

Trapezonotus arenarius L. H; B; K (very common at all three localities). I have not attempted to separate *dispar* Stål.

Rhyparochromus (Graptopeltus) lynceus F. B (1 only).

Beosus maritimus Scop. G; (very common); K.

Emblethis spp. G (2 only). I am unable to determine species of this genus as at present described; the keys of STICHEL and HEDICKE are incompatible. None of the relevant types are in the British Museum (Nat. Hist.).

Scolopostethus affinis Schill. G.

Scolopostethus decoratus Hahn. G.

BERYTIDAE Fieber

Neides tipularius L. B.

Berytinus minor H.-S. H. CHINA points out that *Berytus* F. being a synonym of *Neides* Latr., the next available name, *Berytinus* Kirkaldy, becomes the correct generic name for *Berytus* auctt. nec F.

B. crassipes H.-S. H (common).

Gampsocoris punctipes Germ. B; K (common on *Ononis*). CHINA indicates that *Gampsocoris* Fuss must replace *Metacanthus* auctt. nec Costa.

PIESMIDAE A. & S.

Piesma quadrata Fieb. G.

TINGITIDAE Laporte

Acalypta parvula Fall. B.

Tingis (Tingis) carduii L. H.

Monanthia echii Schr. B (nymphs also present).

Agramma laeta Fall. H. CHINA shows that *Agramma* Stephens 1829 precedes *Serentia* Spinola 1837 as the generic name.

¹⁾ Dr CHINA informs me that application has been made for the fixation of *Nysius* in its traditional form.

ARADIDAE Spinola.

Aradus cinnamomeus Panz. H (very common on young *Pinus sylvestris* L. ; last-instar nymphs present. A sample of females contained 5 macrop-
ters, 11 brachypters).

REDUVIIDAE Latreille.

Coranus subapterus Deg. H.

NABIDAE Costa.

Although placed here after Reduviidae, in fact the affinities of this family are with the Cimicoidea : Cimicidae, Anthocoridae etc.

Nabis (Nabis) fesus L. G ; A ; H ; K.

N. (N.) flavomarginatus Schltz. H.

N. (N.) ericetorum Schltz. G ; H ; B.

N. (Himacerus) apterus F. H ; B.

N. (H.) major Costa. G ; B ; K.

N. (Stalia) boops Schiodte. H (2 specimens, by sweeping in mixed grass and *Calluna*). Not recorded by RECLAIRE as a Netherlands species¹).

N. (Dolichonabis) lineatus Dahlb. A (common in long grass).

ANTHOCORIDAE A. & S.

Anthocoris nemorum L. A ; B.

A. nemoralis F. A ; B.

A. confusus Reut. B.

A. limbatus Fieb. A.

MIRIDAE Hahn.

The classification given follows, where applicable, that of CARVALHO and LESTON (1952). The scheme is approximately phylogenetic in that the primitive subfamilies are given first and the higher Miridae last, but only so far as a linear arrangement permits. All the genera of Netherlands Miridae are included.

DERAEOCORINAE Douglas & Scott 1865 (Mirinae Reuter)

Tribe : CLIVINEMINI Reuter 1876 (Bothynotinae Reut. et auctt.)

1. **Bothynotus** Fieber.

Tribe : DERAEOCORINI Douglas & Scott 1865

2. **Deraeocoris** Kirschbaum.

(includes **Camptobrochis** Fieber, see POPPIUS (1912)).

3. **Alloeotomus** Fieber. Placed in Mirinae by HEDICKE, this genus is in reality Deraeocorinine. SLATER confirms this (1950) from an examination of the female genitalia and I find the claws, toothed at base and with hair-like arolia and no pseudarolia (fig. 1), are simi-

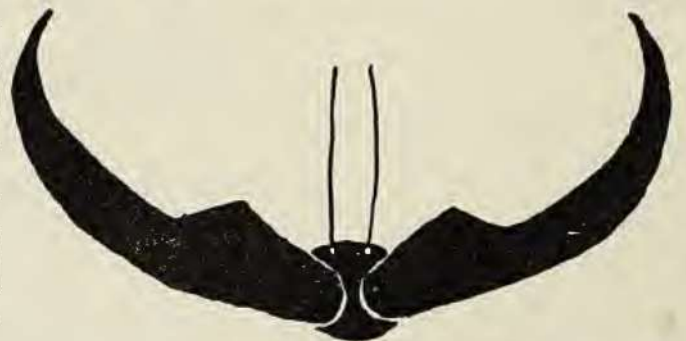


Fig 1. Claws of *Alloeotomus gothicus* Fall.

¹) Mr. W. H. GRAVESTAIN informs me, that *N. (S.) boops* was discovered in the Netherlands by D. MAC GILLAVRY at Nunspeet (prov. of Guelderland) in 1921 (1935, Tijdschr. v. Ent. 78 : IV). No other specimens were found before the two taken by Mr. LESTON. — Ed.

lar to those in *Deraeocoris*. Similarly, the collar is not of the true raised and rounded pattern found in Mirinae. *A. gothicus* Fall. H, common on *P. sylvestris*.

BRYOCORINAE Douglas & Scott 1865

The correct authors are as quoted and not REUTER.

Tribe: BRYOCORINI Douglas & Scott 1865

4. *Monalocoris* Dahlbom
5. *Bryocoris* Fallen

PHYLINAE Douglas & Scott 1865 (Plagiognathinae Osh. et auctt.)

Tribe: PHYLINI Douglas and Scott 1865 (Oncotylini Stichel (sic) and Plagiognathini Stichel (sic))

The classical division into Oncotylaria and Phylaria does not hold; the characters used were not more than generic and not supported by the genitalia.

6. *Lopus* Hahn
7. *Oncotylus* Fieber
8. *Conostethus* Fieber
9. *Hoplomachus* Fieber
10. *Megalocoleus* Reuter. *M. molliculus* Fall. B, (on *Achillea millefolia*).
11. *Amblytylus* Fieber
12. *Macrotylus* Fieber. *M. paykulli* Fall. K.
13. *Harpocera* Curtis
14. *Orthonotus* Stephens. *Byrsoptera* Spin. et auctt. See CHINA.
15. *Phylus* Hahn
16. *Plesiodema* Reuter
17. *Psallus* Fieber. *P. roseus* F. A (on *Salix*); H.
18. *Atractomus* Fieber
19. *Criocoris* Fieber
20. *Plagiognathus* Fieber. *P. arbustorum* F. B; K.
21. *Chlamydatus* Curtis. *P. pulicarius* Fall. K (very common).
22. *Monosynamma* Scott. *Microsynamma* Fieb. See CHINA in WAGNER (1946).
23. *Campylomma* Reuter
24. *Sthenarus* Fieber

Tribe: DICYPHINI Reuter 1883 (Macrolophinae Reut. Macrolophini Kirk. et auctt.)

25. *Macrolophus* Fieber
26. *Dicyphus* Fieber
27. *Campyloneura* Fieber

Tribe: HALLODAPINI Van Duzee 1916 (Systellonotini auctt.)

28. *Systellonotus* Fieber

ORTHOTYLINAE Van Duzee 1916 (Heterotominae Reut. et auctt.)

Tribe: PILOPHORINI Reuter (Heterotomini Stichel (pars))

29. *Pilophorus* Hahn. The genus was described by HAHN 1826 and not WESTWOOD, as usually quoted. *P. cinnamopterus* Kirschb. H.

Tribe : HALTICINI Kirkaldy 1902 (Labopini Eur. auctt nec Am. auctt.)

- 30. *Orthocephalus* Fieber.
- 31. *Pachytomella* Reuter
- 32. *Strongylocoris* Blanchard
- 33. *Halticus* Hahn

Tribe : ORTHOTYLINI Van Duzee 1916 (Heterotomini auctt.)

- 34. *Cyllecoris* Hahn
- 35. *Dryophilocoris* Reuter This genus, erected as a subgenus of *Globiceps* Le P. & S. originally, is valid and includes *D. flavoquadrimaculatus* Deg., the type. See CARVALHO and LESTON (1952) for a discussion of the reasons for this change.
- 36. *Blepharidopterus* Kolenati. *B. angulatus* Fall. G ; A.
- 37. *Globiceps* Le Pelletier & Serville
- 38. *Mecomma* Fieber
- 39. *Cyrtorhinus* Fieber
- 40. *Orthotylus* Fieber
- 41. *Melanotrichus* Reuter. This genus, type *M. flavosparsus* Sahlb., is considered valid by KNIGHT (1941) and CARVALHO and LESTON (1952). The Netherlands species to be removed from *Orthotylus* to *Melanotrichus* are : *flavosparsus* Sahlb., *virescens* D. & S., *concolor* Kirschb., *adenocarpi* Perris, *rubidus* Puton, *moncreaffi* D. & S. (recently raised to specific status by WAGNER (1942), *ericetorum* Fall. The genera can be separated thus :
 - a. Upper surface with simple erect pubescence only ; larger *Orthotylus* Fieb.
 - Upper surface with or without simple erect pubescence but scale-like, often deciduous, hairs always present ; smaller ... *Melanotrichus* Reut.*Melanotrichus* includes subgenus *Halocapsus* Puton. *M. ericetorum* Fall. G ; H ; B (abundant at all three localities).
- 42. *Pseudoloxops* Kirkaldy
- 43. *Heterotoma* Le Pelletier & Serville. *H. meriopteras* Scop. K.
- 44. *Heterocordylus* Fieber
- 45. *Malacororis* Fieber

MIRINAE Hahn

Tribe : PITHANINI Douglas & Scott 1865 (Myrmecorini Reuter et auctt. nec Knight)

- 46. *Myrmecoris* Gorski
- 47. *Pithanus* Fieber

Tribe : STENODEMINI China 1943 (Mirini Reut. et auctt. nec Hahn)

- 48. *Acetropis* Fieber
- 49. *Stenodema* Laporte. *S. laevigatum* L. B. *S. calcarata* Fall. H.
- 50. *Notostira* Fieber
- 51. *Megaloceroea* Fieber

52. *Trigonotylus* Fieber. *T. ruficornis* Geoffr. G.
 53. *Teratocoris* Fieber
 54. *Leptopterna* Fieber. CHINA shows that this name must replace *Miris* auctt. nec F.

Tribe : MIRINI Hahn 1832 (Capsini auctt.)

55. *Pantilius* Curtis
 56. *Miridius* Fieber
 57. *Phytocoris* Fallen. *P. dimidiatus*
 Kirschb. H. *P. varipes* Boh. G ; P ; K.
 58. *Megacoelum* Fieber
 59. *Adelphocoris* Reuter. *A. ticinensis* M-D.
A. A. lineolatus Goeze B ; K.
 60. *Calocoris* Fieber *C. norvegicus* Gme. G.
 61. *Hadrodemus* Fieber. CHINA points out that *Homodemus* Fieb. was an unnecessary emanation.

62. *Miris* F. CHINA gives the synonymy : *Pycnopterna* Fieb.

63. *Stenotus* Jakovlev

64. *Dichrooscytus* Fieber

65. *Lygus* Hahn. As some confusion has occurred through the conflicting subgeneric classifications of KNIGHT (1917, 1941), CHINA (1943) and WAGNER (1949), I give a conspectus of the Netherlands species placed in subgenera. These are based on male and female genitalia, puncturation, pubescence and biology.

Lygus Hahn *pabulinus* L.

Neolygus Knight Group A. *spinolae* M-D.
lucorum M-D.

Group B. *viridis* Fall.
contaminatus Fall.
rhamnicola Reut.
limbatus Fall.

Agnocoris Reuter *reclairei* Wagn.

Orthops Fieber *rubricatus* Fall.
cervinus H.-S.
campestris L.
kalmi L.

Exolygus Wagner *pratensis* L.
pubescens Reut.
gemellatus H.-S.¹⁾
maritimus Wagn.¹⁾

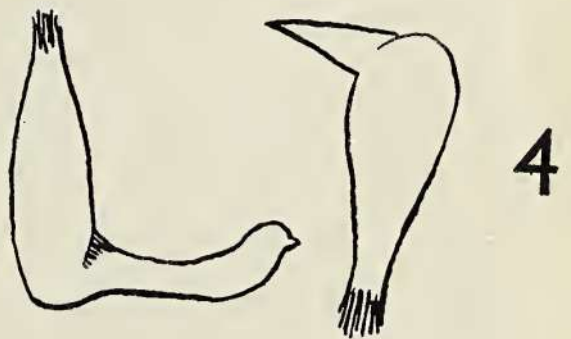
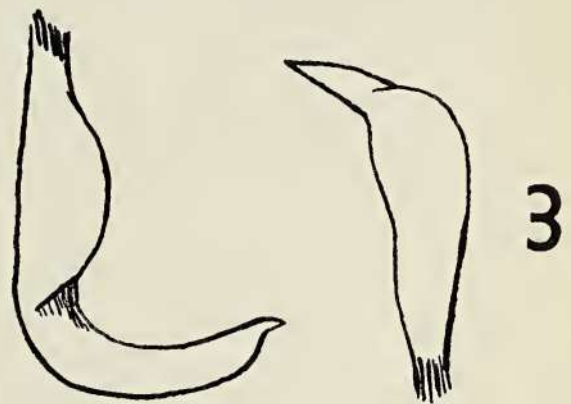
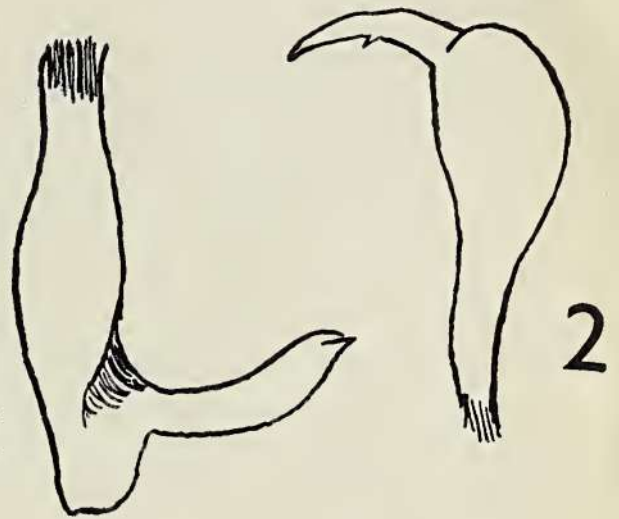


Fig. 2. Parameres of *Lygus* (*Neolygus*) *communis* Knt.

Fig. 3. Parameres of *Lygus* (*Neolygus*) *spinolae* M-D.

Fig. 4. Parameres of *Lygus* (*Neolygus*) *viridis* Fall.

Neolygus Knt. has not previously been recognised in Europe ; a considerable number of the species included within *Apolygus* China belong

¹⁾ B. KULLENBERG (1946, Zool. Bidr. 23 : 67) doubts the specificity of *L. (E.) gemellatus* and its status, as of *L. (E.) maritimus*, must be considered subspecific *pro. tem.*

to it. Figs. 2—4 show the parameres of the type, *communis* Knt. and two European species.

A fuller account of this classification is in preparation. *L. (L.) pabulinus* L. B. *L. (N.) lucorum* M-D. *B. L. (E.) maritimus* Wagn. G ; K.

66. *Plesiocoris* Fieber.

67. *Camptozygum* Reuter

68. *Polymerus* Hahn. KNIGHT (1923) sank *Poeciloscytus* Fieber within *Polymerus* Hahn after an examination of a great number of species. The author of *Polymerus* is HAHN 1831, not WESTWOOD as usually quoted.

69. *Charagochilus* Fieber

70. *Liocoris* Fieber. Until the aedeagus is examined I cannot follow WAGNER in placing *Liocoris* within *Lygus*; it may of course, be so. *L. tripustulatus* F. B.

71. *Capsus* F. *Rhopalotomus* Fieb. in CHINA (1943) but as CHINA (1951) has applied for *Capsus* F. to be conserved with *ater* L. as type, I anticipate the Commission's ruling.

72. *Capsodes* Dahlbom. This is a true Mirini and not a genus of the wholly Neotropical tribe Restheniini Reuter. See CARVALHO and LESTON (1952). *Lopus* auctt. nec Hahn is a synonym.

New synonymy

Neolygus Knight 1917 = *Apolygus* China 1941 (syn. nov.).

References

- CARVALHO, J. C. M. & LESTON, D., 1952, The classification of the British Miridae (Hem.), with keys to the genera, Ent. mon. Mag. (in press).
- CHINA, W. E., 1943, in: The generic names of British insects, 1 (8): 211—342.
- , 1951, Proposed use of the plenary powers to vary the type species of "Capsus" Fabricius, 1803 (Class Insecta, order Hemiptera) in order to validate existing nomenclatorial practice, Bull. zool. Nomencl. 4: 103—104.
- HEDICKE, H., 1935, in: Die Tierwelt Mitteleuropas 4 (3), Leipzig.
- KNIGHT, H. H., 1917, A revision of the genus *Lygus* as it occurs in America north of Mexico, with biological data on the species from New York, N.Y. (Corn.) Ag. exp. Sta. Bull. 391: 555—645.
- , 1923, Hemiptera of Connecticut—Miridae, Bull. Con. geol. nat. Hist. Surv. 34: 422—658.
- , 1941, The plant-bugs, or Miridae, of Illinois, Bull. Ill. nat. Hist. Surv. 22 (1): 1—234.
- POPPIUS, B., 1912, Die Miriden der äthiopischen Region, 1, Acta Soc. sci. Fenn. 41 (3): 1—204.
- RECLAIRE, A., 1932, Naamlijst der in Nederland en het omliggend gebied waargenomen wantsen (Hem.-Het.), Tijdschr. Ent. 75: 59—258.
- SLATER, J. A., 1950, An examination of the female genitalia as taxonomic characters in the Miridae (Hem.), Iowa State Coll. J. Sci. 25: 1—81.
- STICHEL, W., 1925—38, Illustrierte Bestimmungstabellen der deutschen Wanzen (Hem.-Het.), Berlin.
- VAN DUZEE, E. P., 1917, Catalogue of the Hemiptera of America north of Mexico, Univ. Calif. Pub. Ent. 2: 1—902.
- WAGNER, E., 1942, Zur Systematik der Gattung *Orthotylus* Fieb., Mitt. dtsh. ent. Ges. 11: 68—74.
- , 1949, Zur Systematik der Gattung *Lygus* Hahn (Hem. Het. Miridae), Verh. Ver. naturw. Heimatforsch. Hamburg 30: 26—40.
- 44, Abbey Rd., London, N.W. 8, Engeland, Sept. 26th., 1951.