

SHORT COMMUNICATION

Rubus discolor Weihe & Nees (Rosaceae): type and identity

A. van de Beek¹

Key words

Rubus discolor
lectotypification

Abstract – The previously designated lectotype of *Rubus discolor* appeared to be in serious conflict with the protologue. Because no other original specimens could be found, it was decided to designate the illustration in Weihe & Nees, Rubi Germanici, as the new lectotype. From field work on the only locality that is mentioned in the protologue (Bonn, Germany) it became clear that the species is identical with *R. pseudargenteus*. Because *R. discolor* is earlier published, this is the correct name of the taxon. An epitype, which was collected on the west bank of the River Rhine near Bonn, is designated here.

Samenvatting – Het lectotype van *Rubus discolor* dat vroeger was aangewezen bleek niet overeen te komen met de protoloog. Daarom moest een ander type worden gezocht. Aangezien geen originele exemplaren konden worden gevonden die overeenkomen met de protoloog, werd de illustratie in de Rubi Germanici van Weihe & Nees, die deel uitmaakt van de protoloog, aangewezen als het nieuwe lectotype.

De enige locatie die in de protoloog genoemd wordt is 'aan de Rijn bij Bonn'. Uit veldwerk aldaar bleek dat de enige soort die daar met *Rubus discolor* overeenkomt, het taxon is dat tot nu toe *R. pseudargenteus* werd genoemd. Omdat *R. discolor* eerder is gepubliceerd, is *R. discolor* dus de correcte naam van voor dit taxon. Om de bevindingen vast te leggen werd een exemplaar dat verzameld is aan de oever van de Rijn bij Bonn als epitype aangewezen.

Published on 16 December 2022

Weihe & Nees (1822–27), in the first monograph on *Rubus* L. in Europe, described a *Rubus discolor* Weihe & Nees from the region of Bonn in Germany. It has been a mystery what the authors meant by this species until now. Several suggestions have been made, but we only knew what it is *not*, because all proposals did not correspond with the protologue.

Van de Beek (1979) designated a specimen in JE (err. typ. 'LE') as lectotype (Fig. 1; BREM [BREM_0002185-002]). He identified this with *Rubus bifrons* Vest. It is presently conserved in BREM. The inflorescence has straight prickles and leaves with a fine serrature. Weihe and Nees write that the prickles are curved,

which is also the case on their illustration; the serrature of the leaves at the illustration is coarse. So the specimen cannot be the lectotype.

In spite of intensive investigations, no other original specimen which corresponds with the protologue could be found. Therefore, only the illustration in Weihe & Nees (1824) remains. From field work in the region of Bonn, the only locality that Weihe & Nees mention in the protologue, it appeared that *Rubus discolor* is identical with *R. pseudargenteus* H.E.Weber. An epitype which corresponds with the protologue is designated here.

¹ Petenbos 8, 3904 BN Veenendaal, the Netherlands;
e-mail for correspondence: beekavd@xs4all.nl



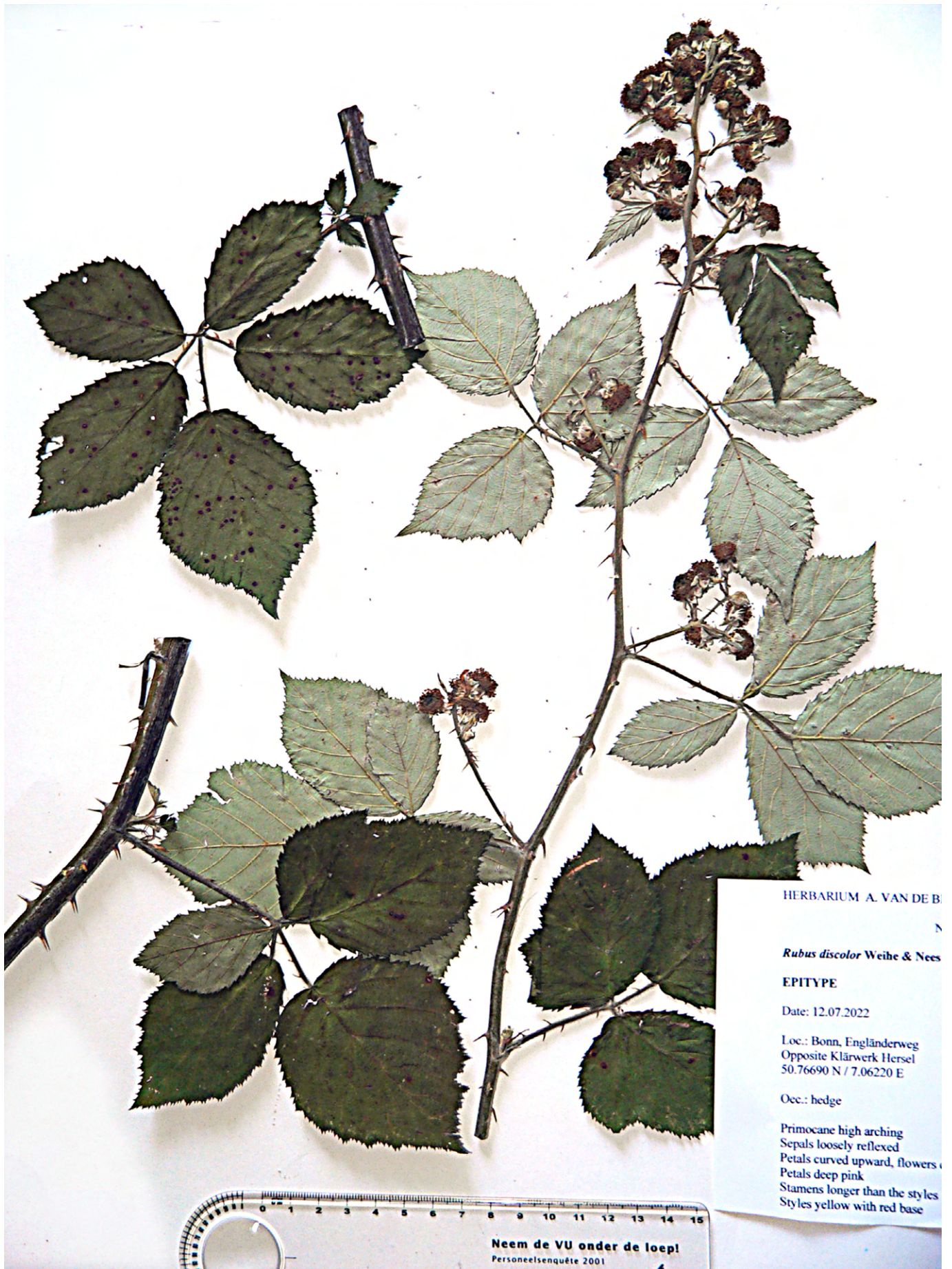
Fig. 1. *Rubus discolor* Weihe & Nees, superseded lectotype. Photo: Überseemuseum, Bremen (BREM), Germany.



Fig. 2. *Rubus discolor* Weihe & Nees, new lectotype. Illustration: tab. XX in Weihe & Nees, [Rubi Germanici \(1824: tab. XX\)](#).



Fig. 3. *Rubus discolor* Weihe & Nees, epitype sheet 1 (Van de Beek 2022.36, L). Photo: Bram van de Beek.



HERBARIUM A. VAN DE BEEK

Rubus discolor Weihe & Nees

EPITYPE

Date: 12.07.2022

Loc.: Bonn, Engländerweg
Opposite Klärwerk Hersel
50.76690 N / 7.06220 E

Occ.: hedge

Primocane high arching
Sepals loosely reflexed
Petals curved upward, flowers
Petals deep pink
Stamens longer than the styles
Styles yellow with red base

Neem de VU onder de loep!
Personeelsenquête 2001

Fig. 4. *Rubus discolor* Weihe & Nees, epitype sheet 2 (Van de Beek 2022.36, L). Photo: Bram van de Beek.

***Rubus discolor* Weihe & Nees**, Rubi Germanici 46 (1824)—[Fig. 2, 3 & 4](#).

Lectotype (designated here): tab. XX in Weihe & Nees, Rubi Germanici (1824; see [Fig. 2](#)). — This replaces the previous selected lectotype which was designated by [van de Beek \(1979\)](#) in JE (err. typ. LE), now BREM [BREM_0002185-002] ([Fig. 1](#)).

Epitype (designated here): [Van de Beek 2022.36](#), Bonn, Engländerweg, opposite Klärwerk Hersel, 50.76690 N / 7.06220 E, 12.07.2022 (L; [Fig. 3 & 4](#)).

Synonym: *Rubus pseudargenteus* H.E.Weber, [Osnabrück. Naturwiss. Mitt. 17: 194 \(1991\)](#).

Holotype: [Weber 91.722.2](#), Rulandsweg E Heidgen bei Witterschlick, 22.7.1991 (HBG).

Extensive background information and discussions on the identity of *Rubus discolor* can be obtained from van de Beek's website ([van de Beek 2022](#)).

Acknowledgement – The author expresses his gratitude to the staff of all institutions who supported him by their hospitality or searches; especial thanks to the staff of the Überseemuseum in Bremen (BREM) for the pictures of the superseded lectotype.

REFERENCES

- van de Beek A. 1979. Taxonomie en nomenclatuur van de Koebraam. [Gorteria 9: 204–208](#).
- van de Beek A. 2022. [On the type and identity of Rubus discolor Weihe & Nees \(Rosaceae\)](#). Webpage on the author's [Rubus website](#), published on 15 December 2022.
- [Weihe KE, Nees von Esenbeck CGD. 1822–27](#). Rubi Germanici. Die Deutschen Brombeersträucher. Schönian'sche Buchhandlung, Elberfeld. (*Rubus discolor* on [p. 46](#)).
- [Weihe KEA, Nees von Esenbeck CGD. 1824](#). Rubi Germanici. Die deutschen Brombeersträucher. 2. Lieferung. Schönian'sche Buchhandlung, Elberfeld.