

BROMELIACEAE OF SURINAME

BY

LYMAN B. SMITH

(*Smithsonian Institution, Washington D.C.*)

(*received December 12th, 1955*)

In the course of preparing a treatment of the *Bromeliaceae* for the "Flora of Suriname" four new species have been encountered and are here recorded for the first time.

***Pitcairnia Geyskesii* L. B. Smith, nov. spec.**

A *Pitcairnia nuda* Baker, cui affinis, laminis foliorum subtus dense lepidotis, floribus minoribus differt.

Planta acaulis, verisimiliter metralis vel ultra sed e fragmentis solum cognita. Folia plurima, 4 dm longa, vaginis suborbicularibus, parte occulta atro-castanea glabraque, tertia parte suprema laminam simulante, laminis angustissime triangularibus, basi nullo modo attenuatis, longe acuminatis, pungentibus, 1 cm latis, supra glabris, subtus lepidibus magnis cinereis adpressis omnino indutis, spinis patentibus brunneis 4 mm longis laxe armatis. Scapus ignotus. Inflorescentia laxe bipinnata, glabra. Bractee primariae triangulares, quam bases steriles

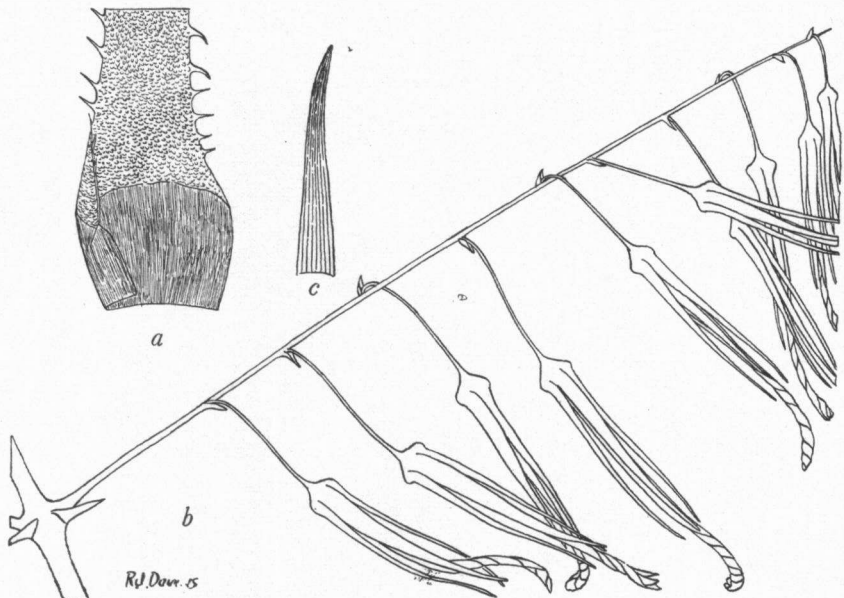


Fig. 1. a: *Pitcairnia Geyskesii* L. B. Smith, base of leaf 1; b: branch of inflorescence 1; c: sepal 1.

ramorum breviores, supremis integris. Rami patente-adscendentes, 4 dm longi, gracillimi. Bracteae florigerae late ellipticae, acutae, 4 mm longae. Pedicelli gracillimi, 2 cm longi. Flores pendentes, secundi. Sepala anguste triangulares, abrupte acuta, 30 mm longa, basi obscure carinata. Petala 40 mm longa, nuda. Stamina exserta. Ovarium $2/3$ superum. Capsula dehiscens; seminibus alatis.

Suriname: Rocky slopes, Temomaiem (Geyskes 10, Typus in Herb. Rheno-trai. fl. et fr. m. Julio).

Bromelia alta L. B. Smith, **nov. spec.**

Statura maxima et bracteis primariis florigerisque amplis facile distinguenda.

Planta florigera ad 2 m alta vel ultra. Folia multa, subrecta, 3–4 m longa; vaginis subtriangularibus, atro-castaneis, lepidibus linearibus brunneis indutis; laminis linearibus, acuminatis, pungentibus, verisimiliter ad basin versus paulo attenuatis, 7 cm latis, late canaliculatis, supra glabris, subtus pallide lepidotis, spinis latis curvatis applanatis 6 mm longis laxe serratis. Scapus validus, dense brunneo-lepidotus. Scapi bracteae fragilae; laminis mox perditis; vaginis imbricatis, subellipticis, ultra 12 cm longis, serrulatis, brunneo-lepidotis. Inflorescentia dense cylindrica, obtusa, 25 cm longa, 7 cm diametro, petalis inclusis brunneo-lepidota. Bracteae primariae erectae, breviter laminatae; vaginis suborbiculares, ramos breves dense florigeros magna ex parte obtegentes. Bracteae florigerae oblongae, acutae, 3–4 cm longae, conduplicatae, serrulatae. Flores obscure pedicellati. Sepala subtriangularia, 20–24 mm longa, libera, tenuia, fragilia. Petala 27 mm longa; laminis purpureo-maculatis; tubo filamentorum 5 mm longus. Fructus ellipsoideus 2 cm longus.

Suriname: Terrestrial, Paramaribo, Saramacca R., near sea level (M. B. Foster 2378, Typus in U. S. Nat. Herb., fr. Oct.); very abundant on top of high sand ridge in forest, Perica River, Commewijne District (Lindeman n. 5316, fl. Jan.).

Bromelia Fosteriana L. B. Smith, **nov. spec.**

A *Bromelia Morreniana* (Regel) Mez foliis haud distincte petiolatis, et a *B. agavifolia* Brongn. sepalis alte connatis, petalis dense brunneo-lepidotis differt.

Breviter caulescens, basi propaginibus multis erectis sese procreans. Folia multa, patentes, 9–12 dm longa; vaginis oblongis, 4 cm latis, brunneis, lepidibus magnis linearibus brunneis indutis; laminis sublinearibus, longe acuminatis, ad basin versus attenuatis, dein in parte suborbiculari abrupte dilatatis, 5 cm latis, medio late canaliculatis, brunneo-lepidotis, supra mox glabris, spinis 1.5 mm longis laxe serratis. Inflorescentia pauciflora, dense corymbosa, 5 cm diametro, inter folia intima nidulans, petalis ipsis inclusis dense brunneo-lepidota. Bracteae primariae subfoliaceae; laminis parvis; vaginis sepalae aequantibus. Bracteae florigerae oblongae, ovarium multo superantes, serrulatis, ex sicco tenues fragilesque. Flores obscure pedicellati. Sepala oblonga, obtusa, cucullata, 21 mm longa, ad medium connata, serrulata. Petala lineares, obtusa, cucullata, 37 mm longa, stamina multo

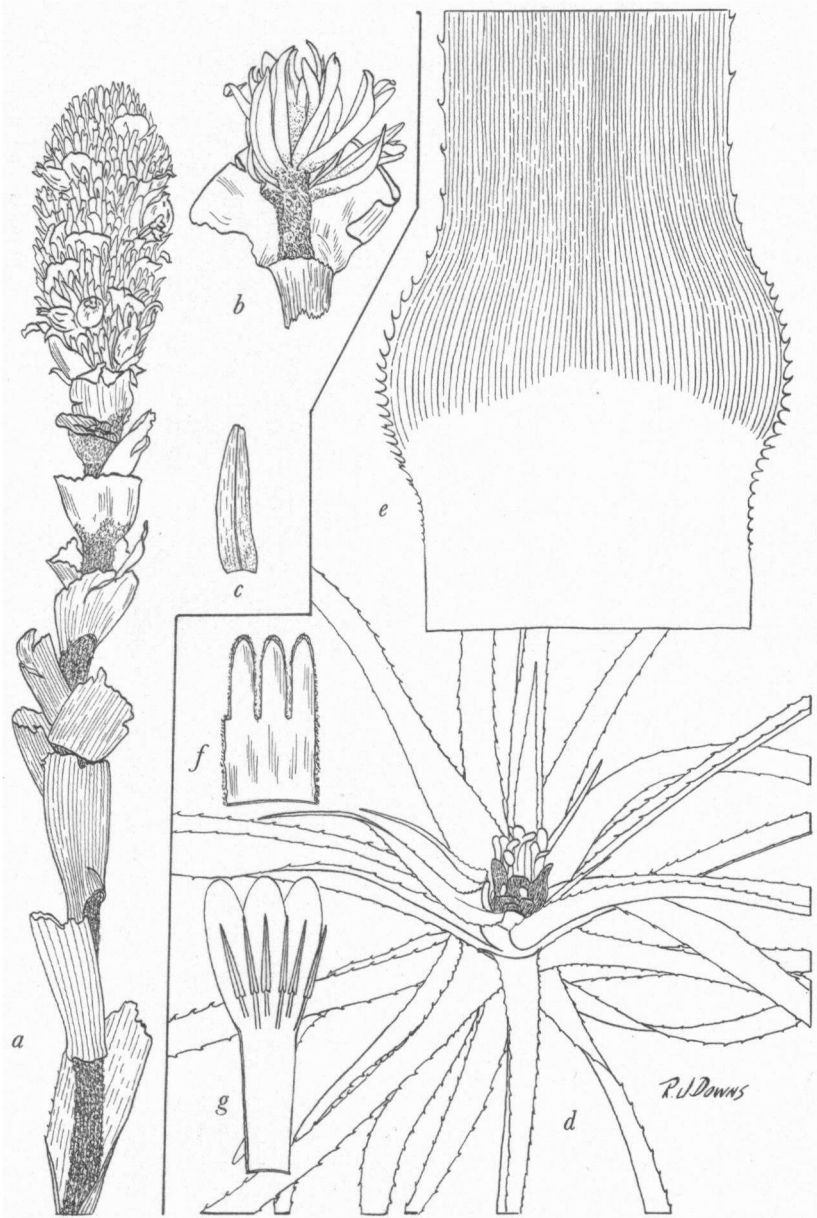


Fig. 2. a: *Bromelia alta* L. B. Smith, upper scape and inflorescence 1/4; b: branch and sheath of primary bract 1/2; c: sepal 1;
 d: *Bromelia Fosteriana* L. B. Smith, plant (after photograph by M. B. Foster); e: base of leaf-blade 1; f: ventral side of sepals 1; g: petals and stamens 1.

superantes. Tubus filamentorum 17 mm longus. Ovarium subcylindricum, ad 3 cm longum.

Suriname: Terrestrial, dense moist forest, Paramaribo (M. B. Foster 2389, Typus in U. S. Nat. Herb. fr. m. Oct.).

Gravisia Lanjouwii L. B. Smith, **nov. spec.**

A *Gravisia aquilega* (Salisb.) Mez et *G. capitata* (Schult.) L. B. Smith floribus spicatis, et a *G. Constantinii* Mez bracteis florigeris magnis differt.

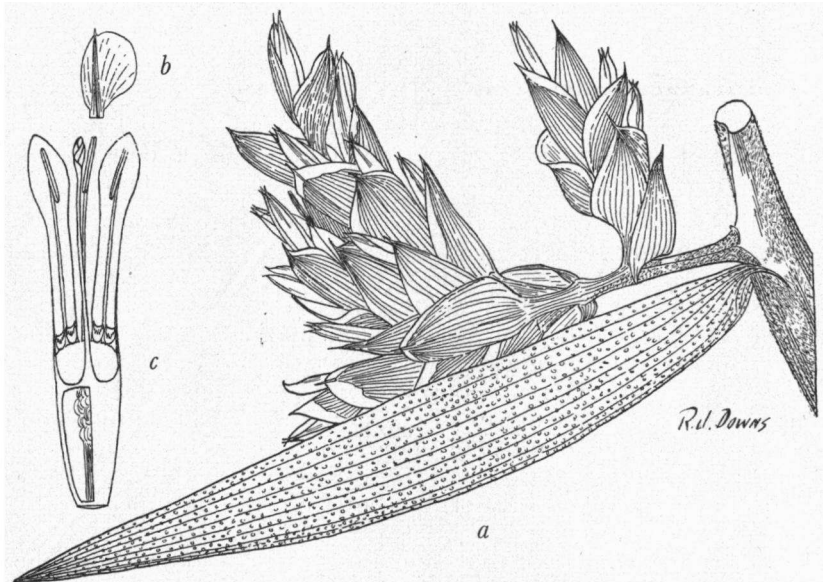


Fig. 3 a: *Gravisia Lanjouwii* L. B. Smith, primary bract and branch of inflorescence 1; b: expanded sepal 1; c: longitudinal section of flower 2.

Planta ultra 1.2 m alta. Folia ultra 6 dm longa, lepidibus appressis albis centro brunneis induta; vaginis subellipticis, ca. 2 dm longis; laminis ligulatis, late acutis et pungente cuspidatis, 6 cm latis, spinis atris 3 mm longis laxe serratis. Scapus validus, albo-flocculosus, mox glaber. Scapi bracteae imbricatae, magnae, ellipticae, acutae, integrae, dense pallido-lepidotae; supremis roseis. Inflorescentia 2-3-pinnata, basi laxa, subcylindrica, 3 dm longa; axibus flocculosis. Bracteae primariae eas scapi simulantes, ramos infimos superantes. Rami patentes; axibus florigeris elongatis, floribus spicatis. Bracteae florigerae late ovatae, mucronatae, 15 mm longae, ovarium superantes, integrae, late convexae, ad apicem versus carinatae, prominente nervatae, conspicue hyalino-marginatae, glabrae. Sepala asymmetrica cum ala semiobovata, 12 mm longa mucrone 1 mm longo incluso, basi ad 2 mm connata. Petala ligulata, 15 mm longa.

Suriname: On granite flat near Voltzberg (Lanjouw 874, Typus in Herb. Rheno-trai. fl. m. Sept.).