

Hierachter volgen:

PLANTENKAARTJES VOOR NEDERLAND.

1: 2.500.000

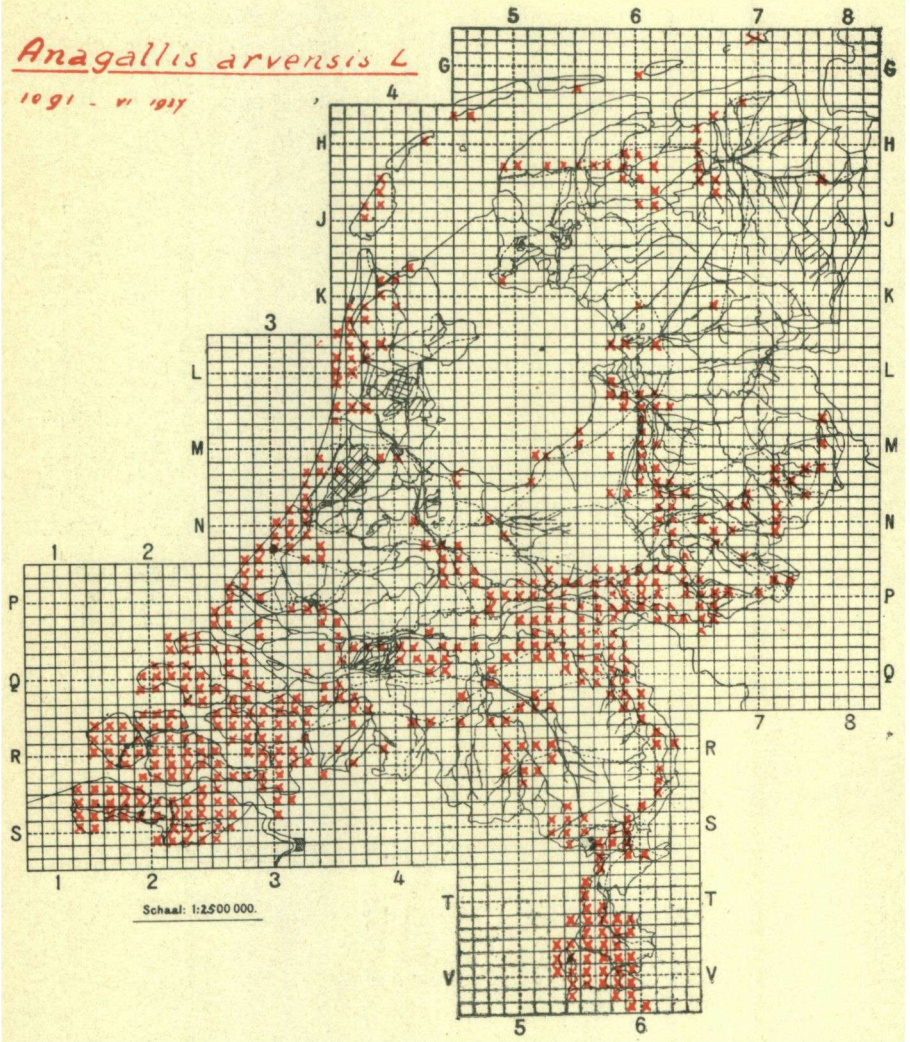
Primulaceae.

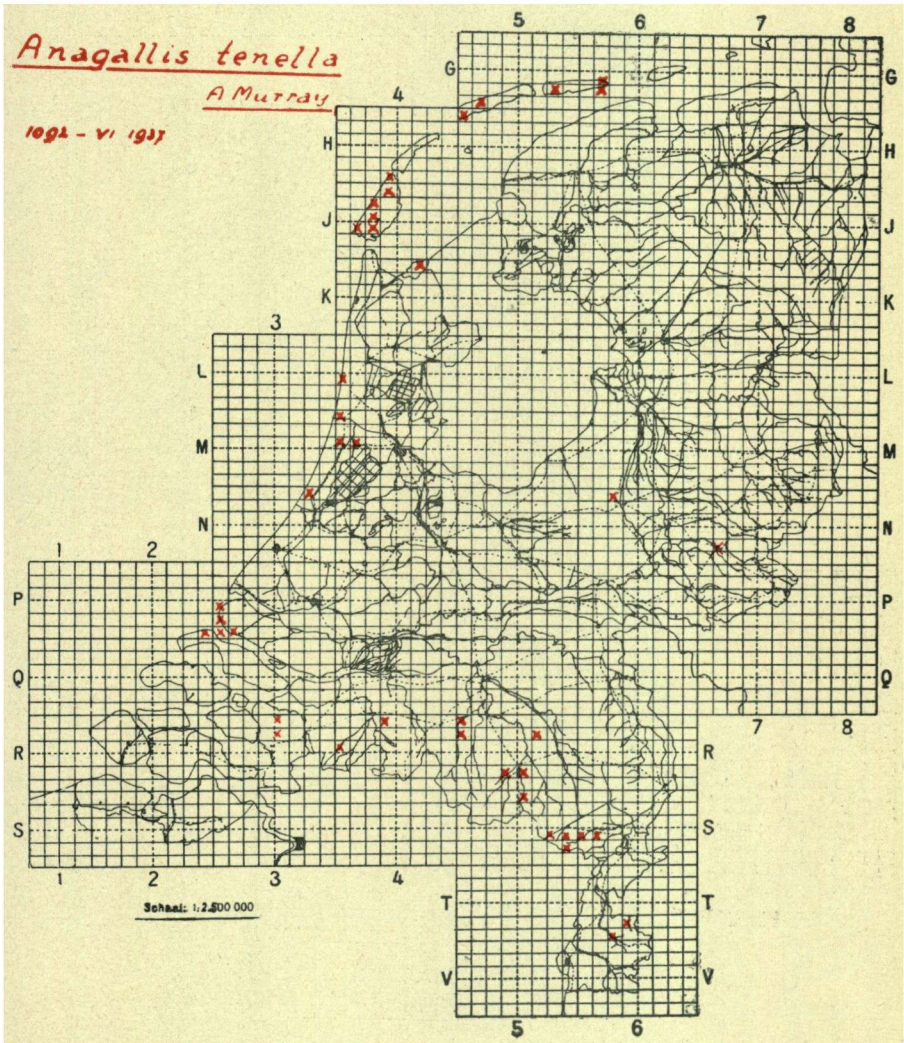
Orchidaceae I.

(Publicatie 2 afl. 4 der Verslagen en Mededeelingen van het
Instituut voor het Vegetatie-onderzoek van Nederland. -I.V.O.N.).

Anagallis arvensis L

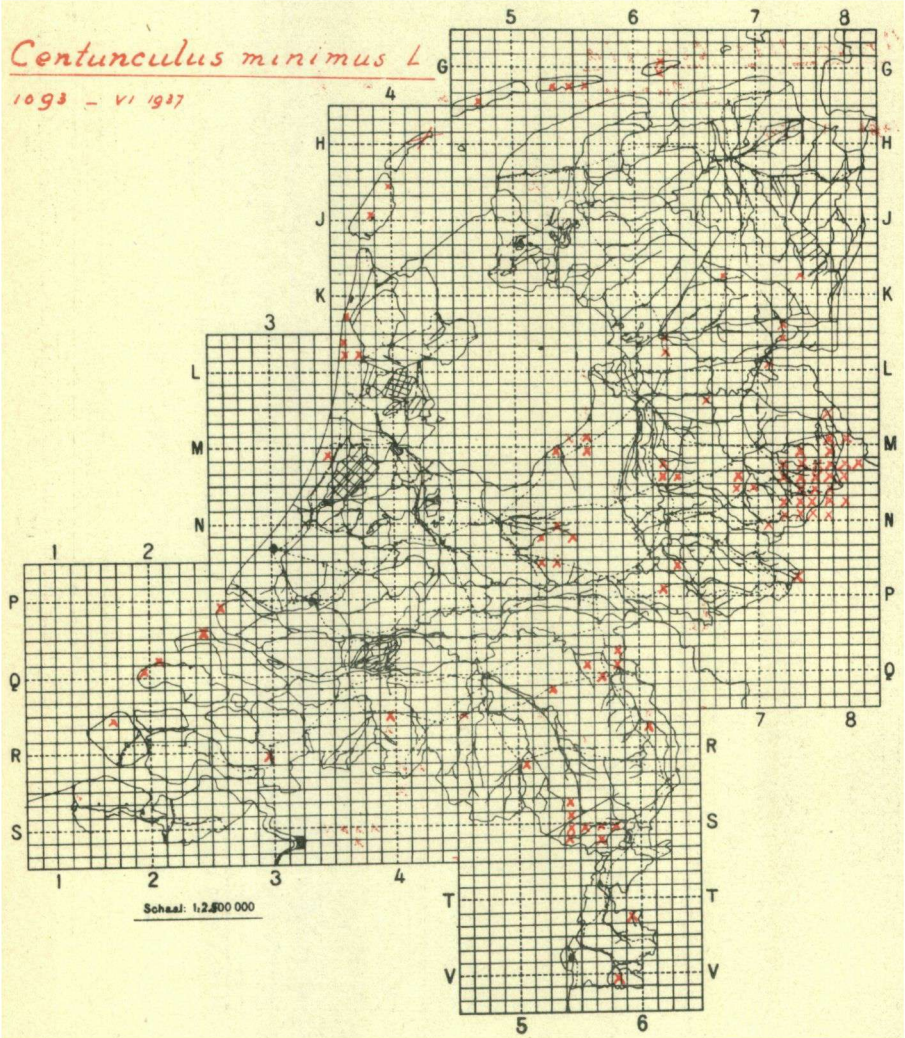
1891 - VI 1917

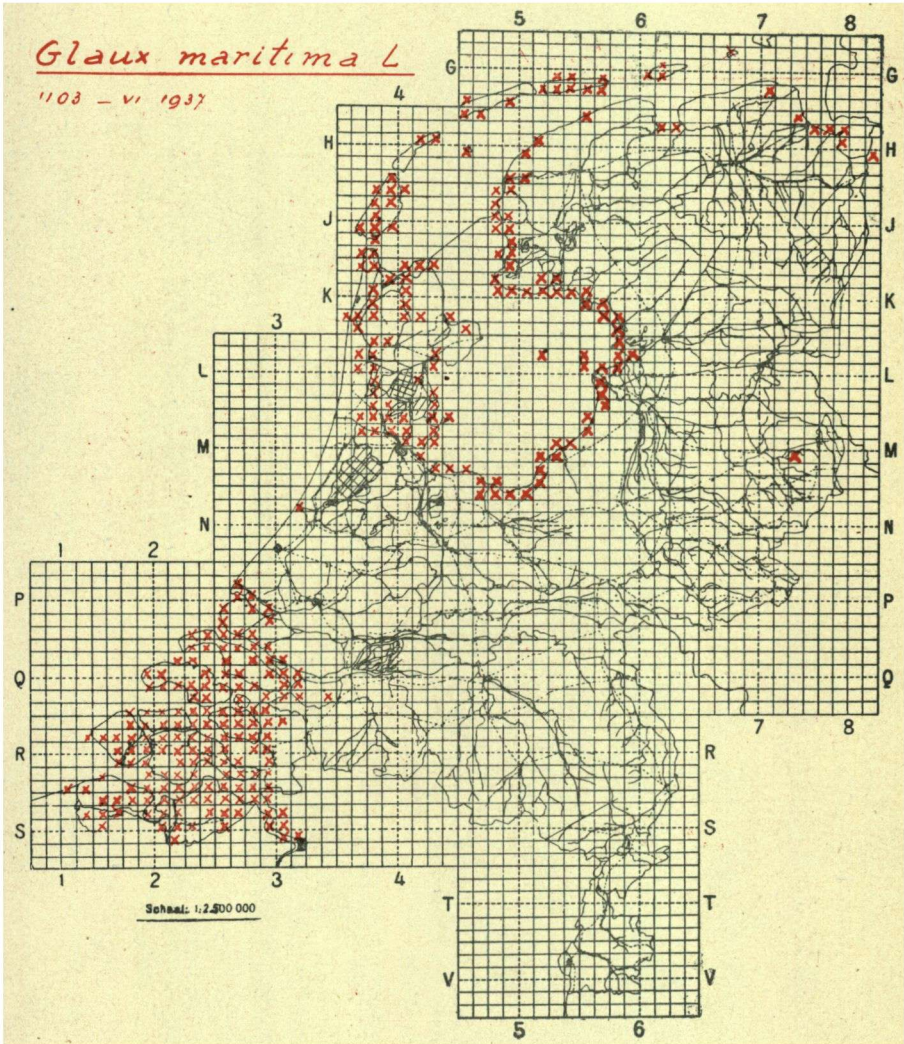




Centunculus minimus L.

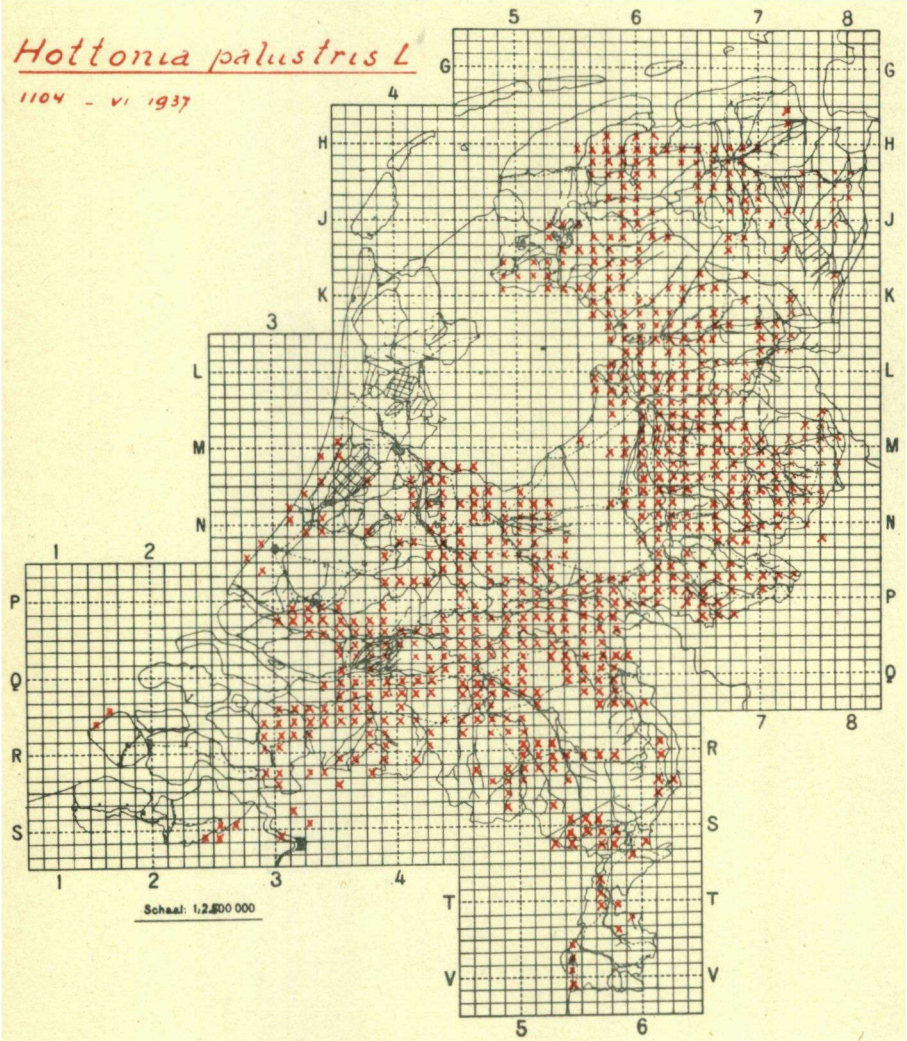
1093 - VI 1937

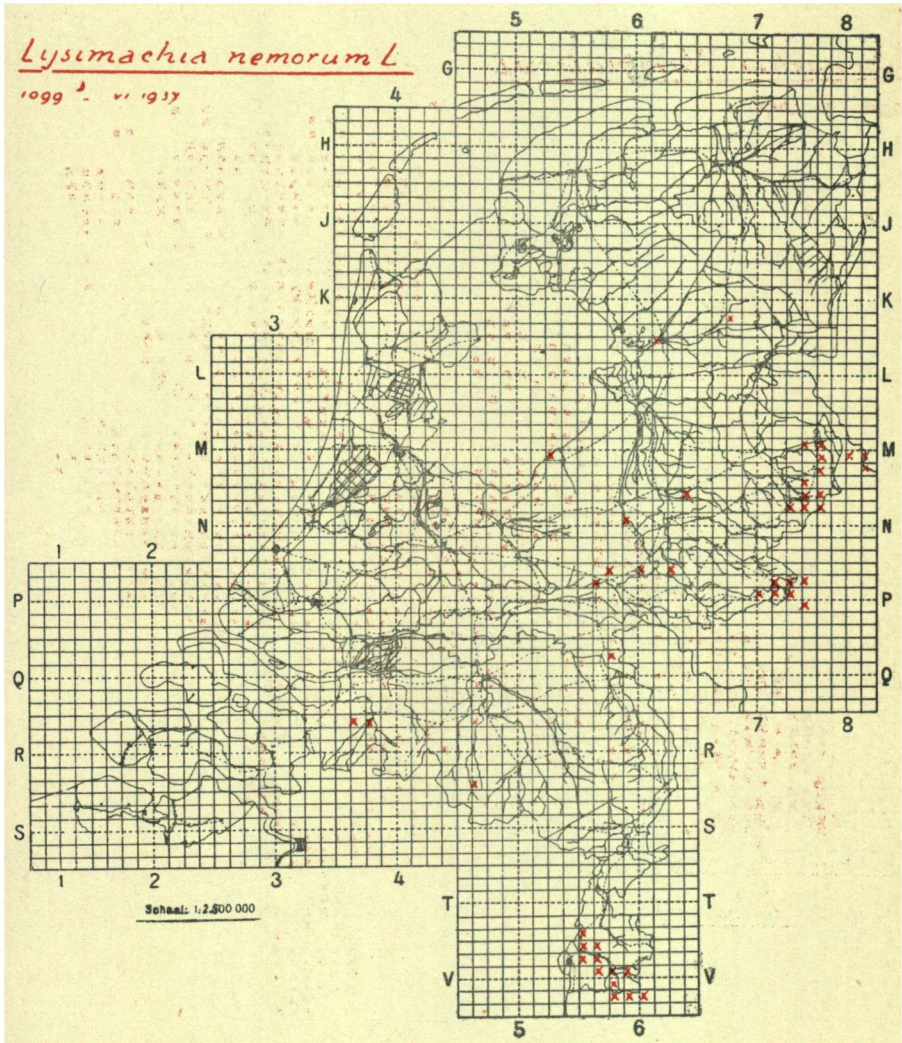




Hottonia palustris L.

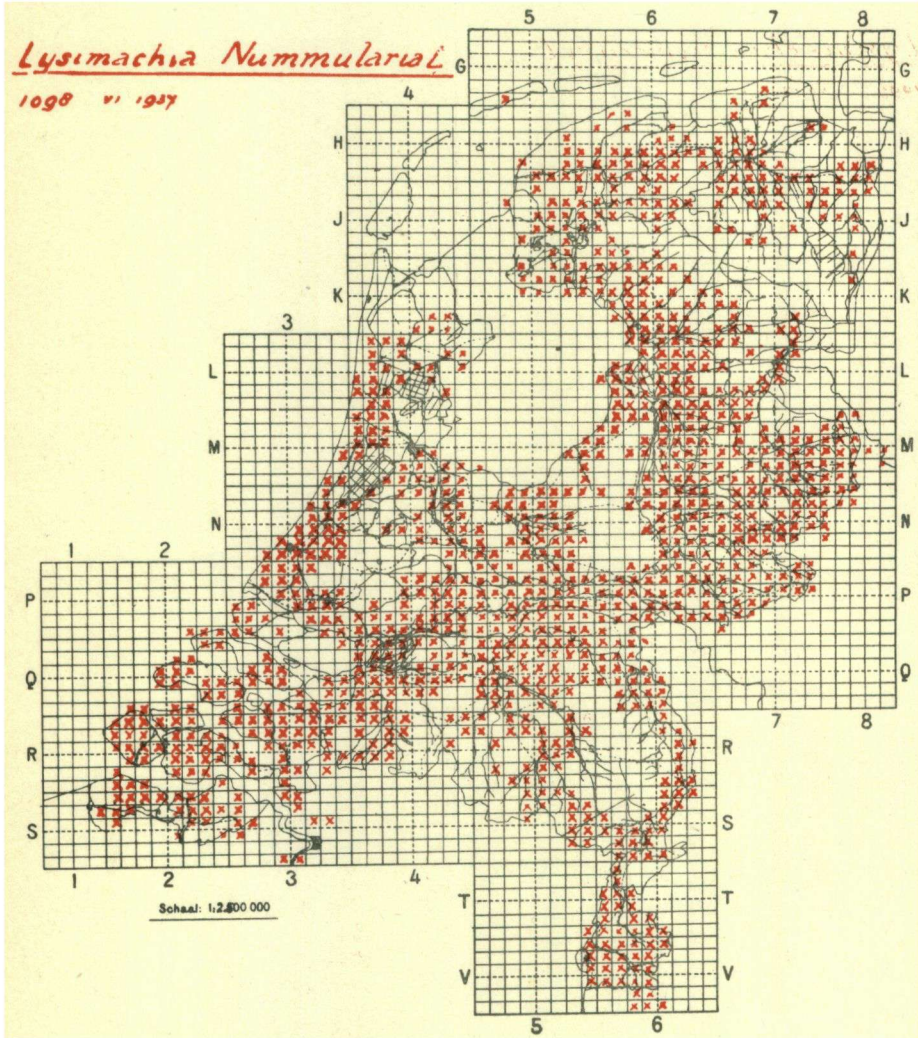
1104 - VI 1937





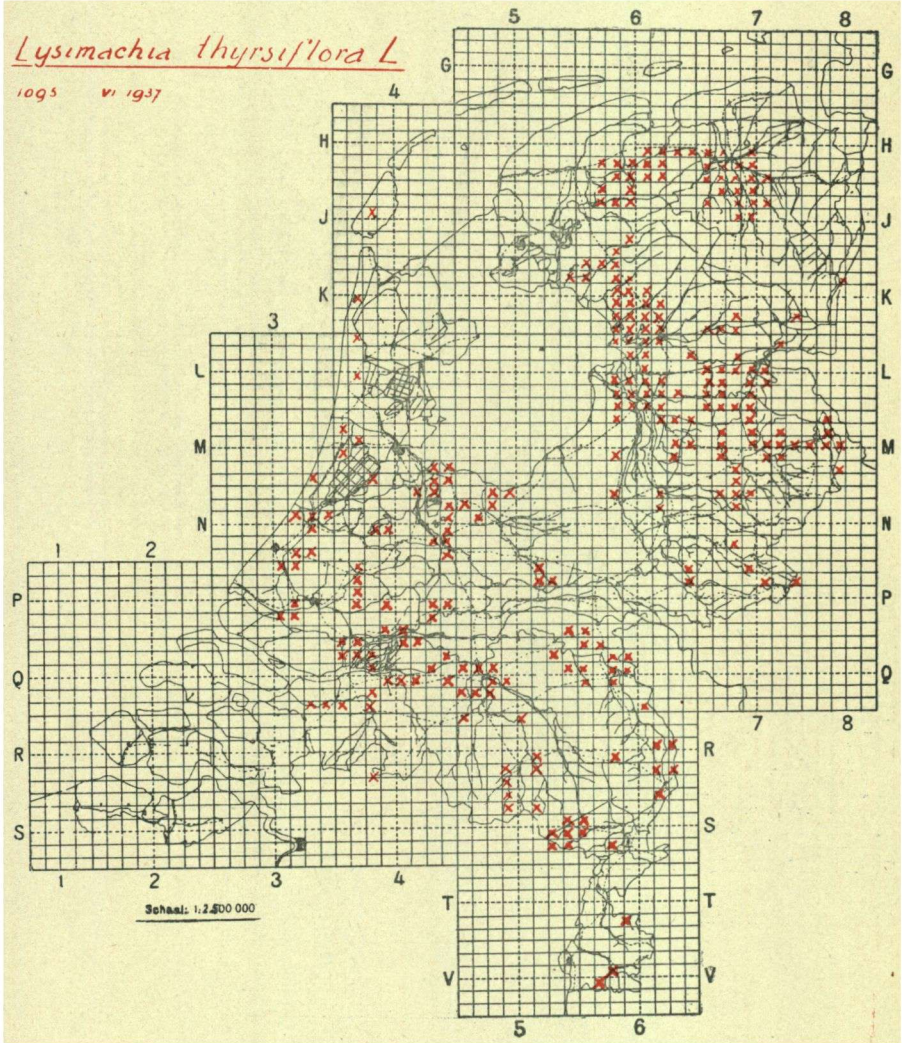
Lysimachia Nummularia L.

1098 v. 1937



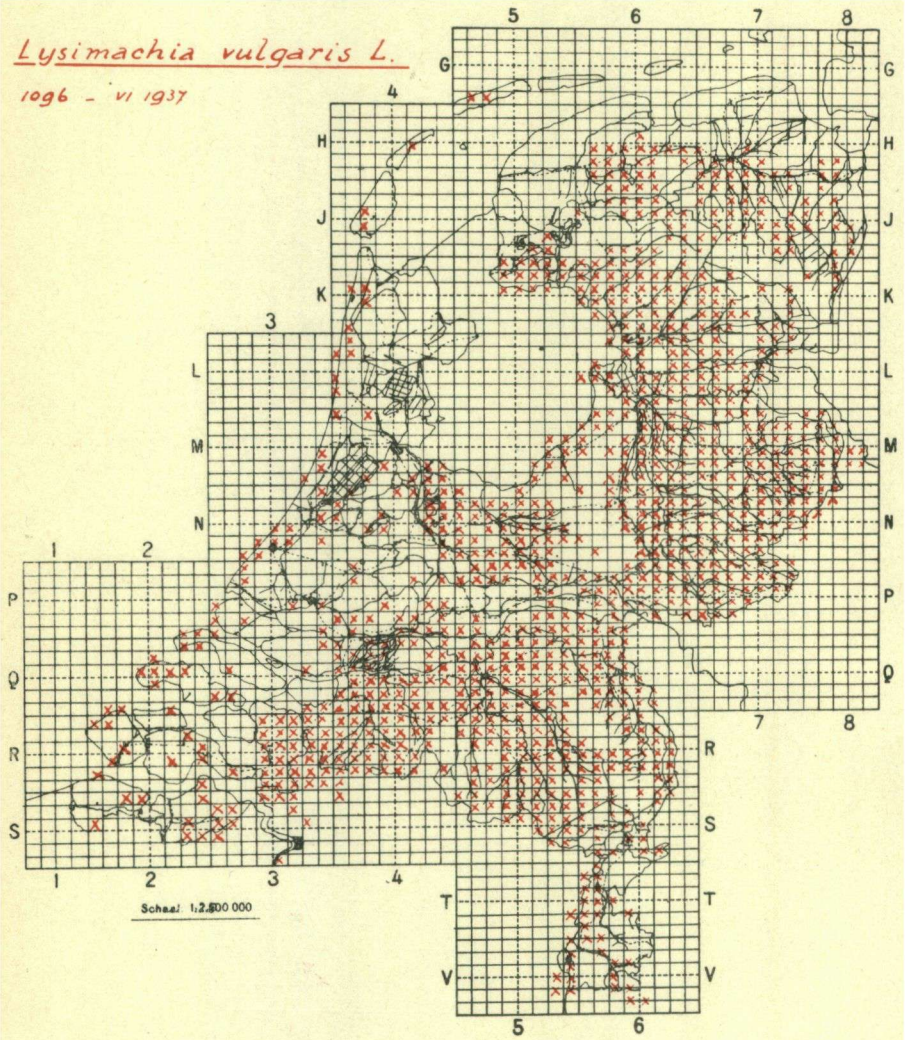
Lysimachia thyrsiflora L

1095 vi 1937



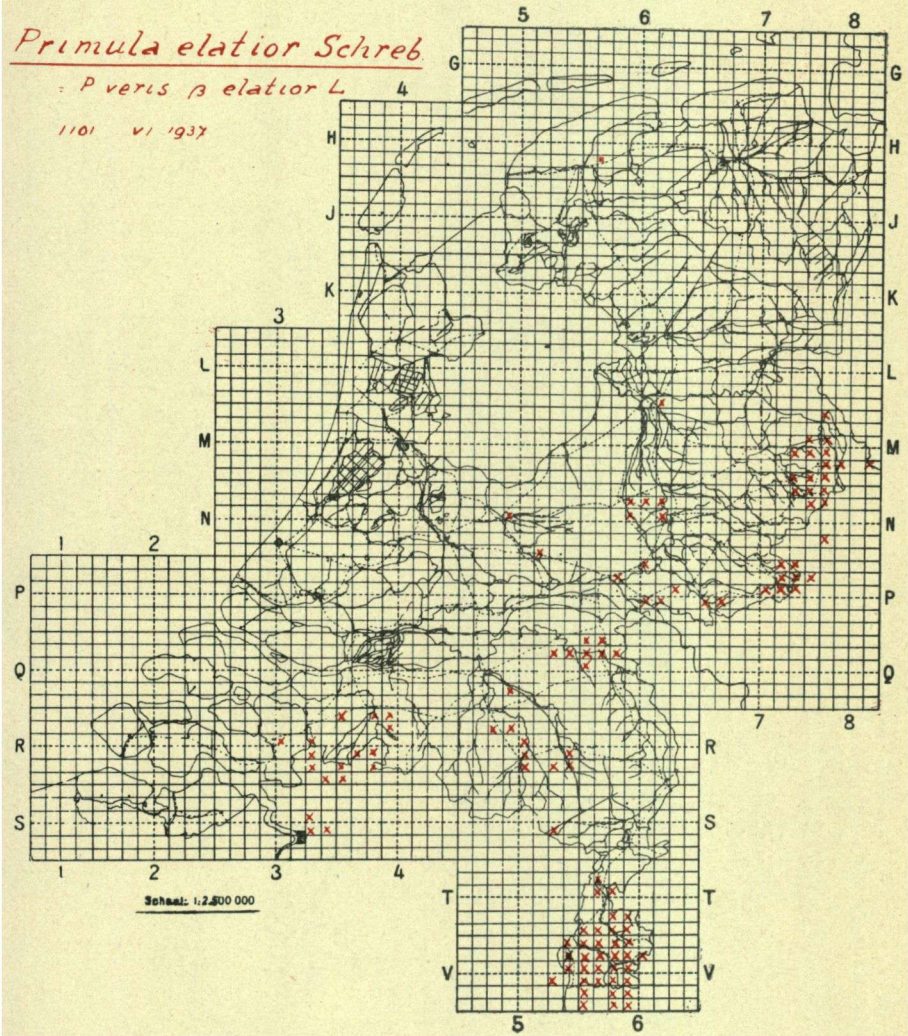
Lysimachia vulgaris L.

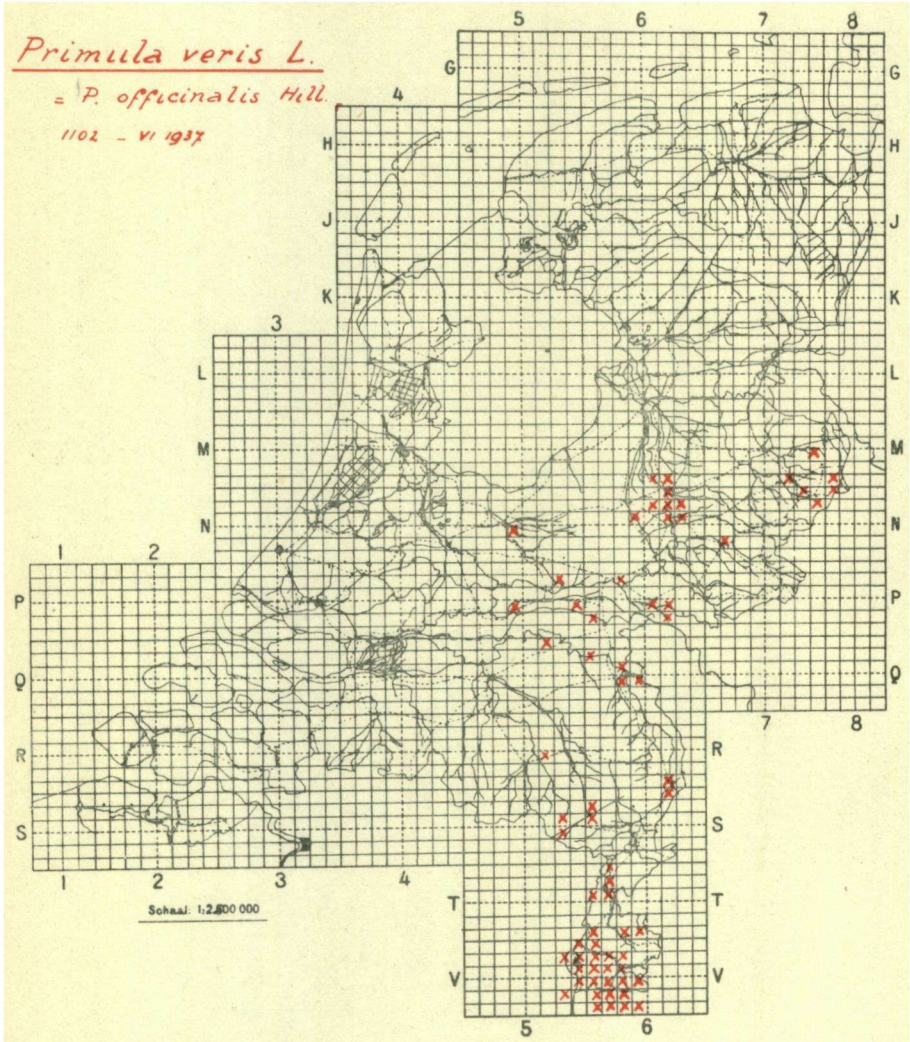
1096 - VI 1937

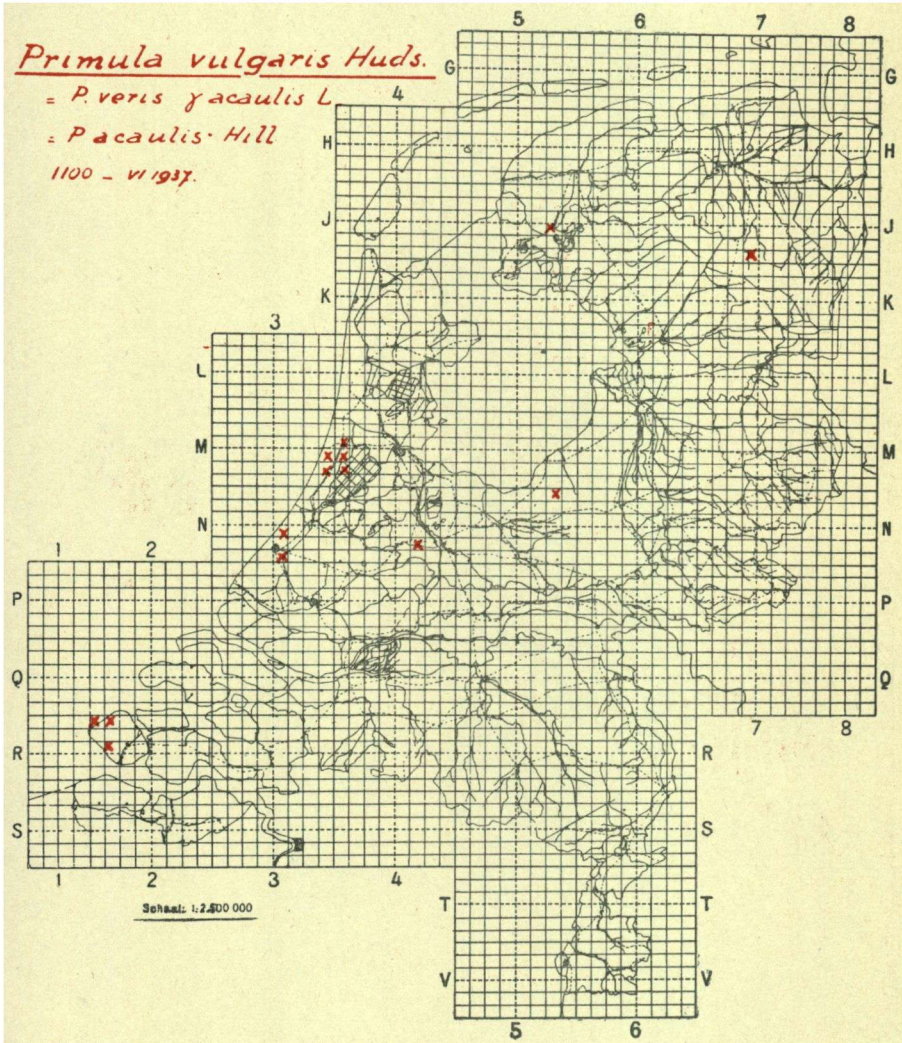


Primula elatior Schreb- *P. veris* β *elatior* L.

1101 v. 1937

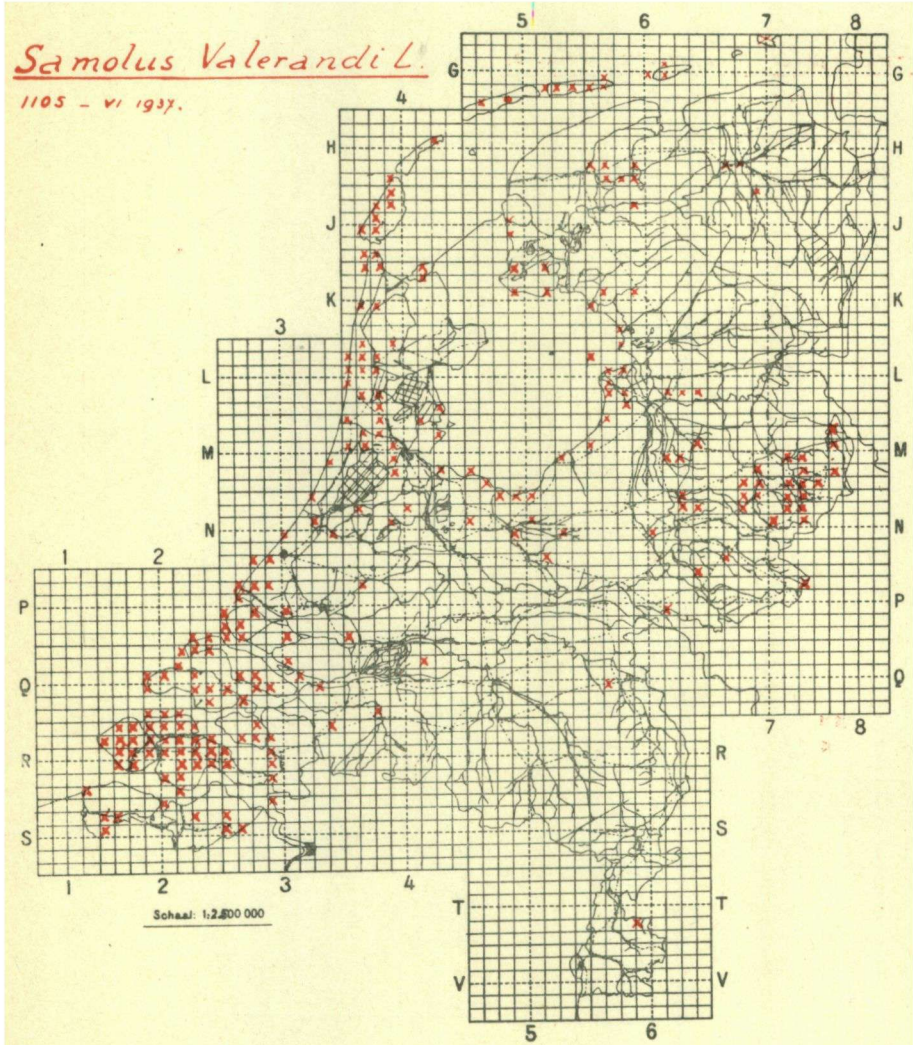


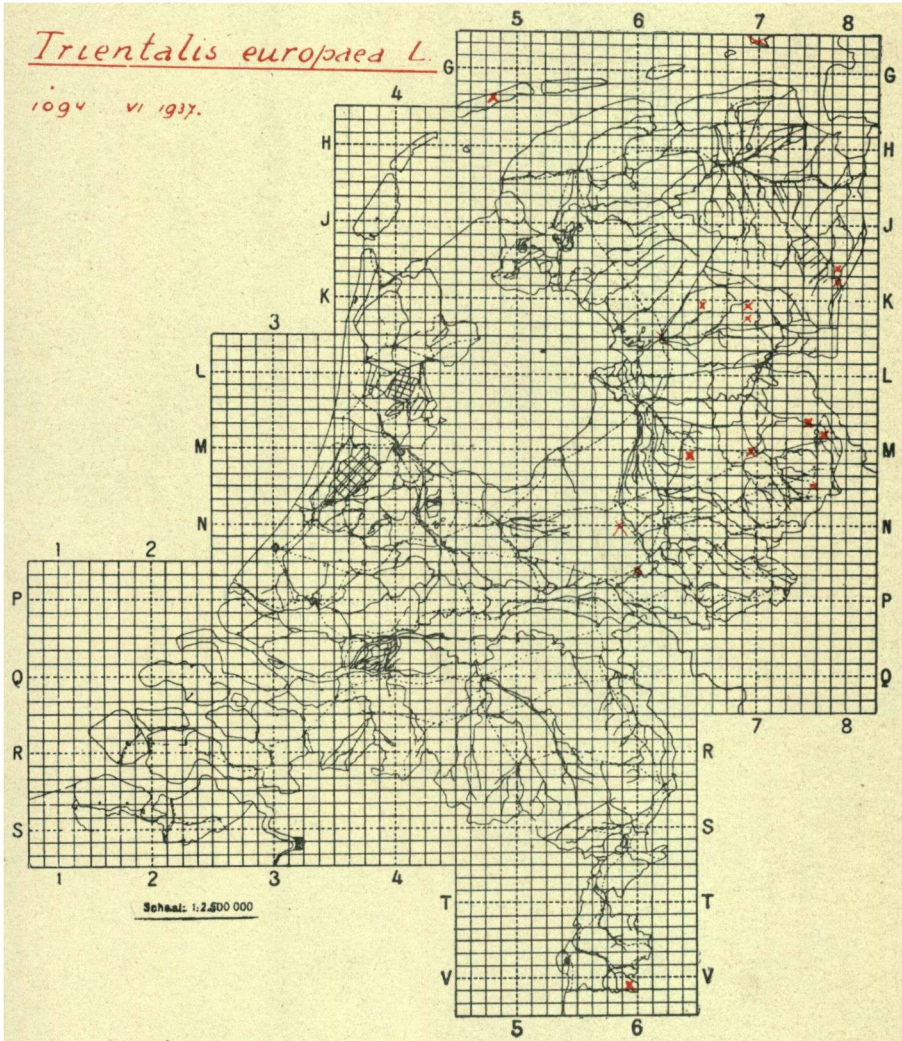


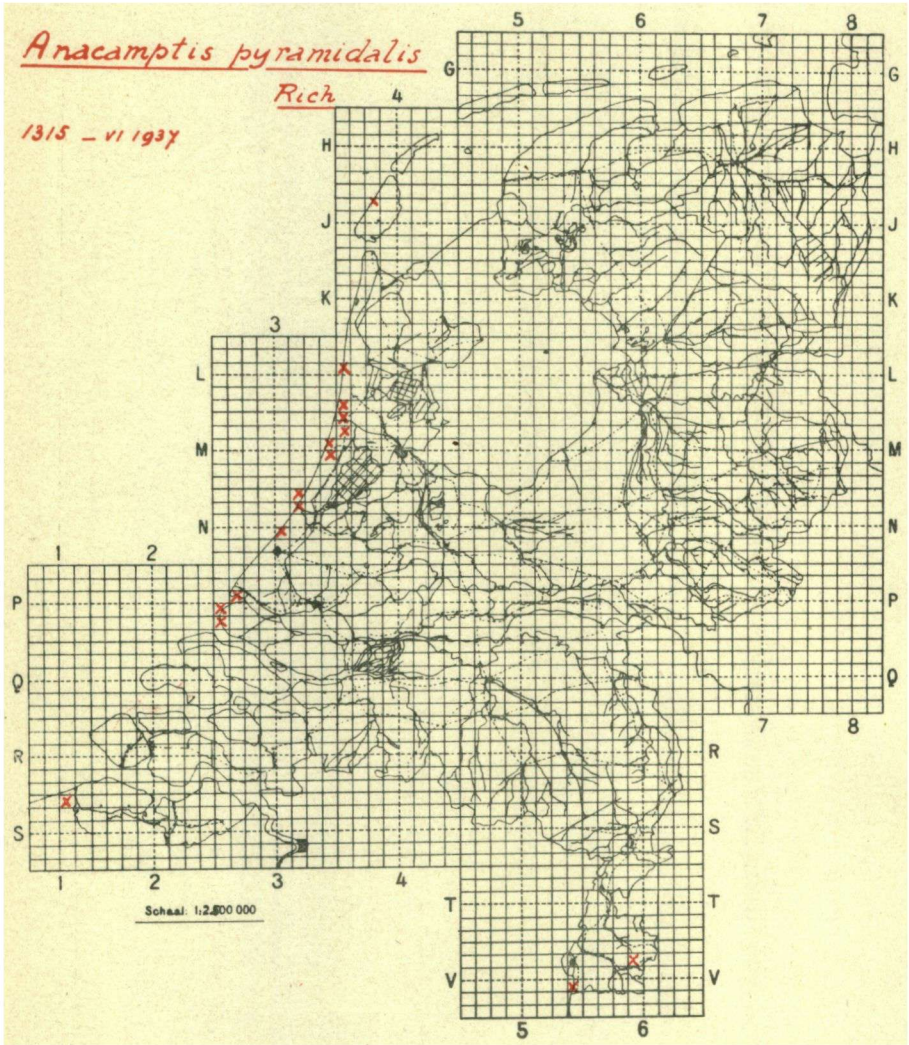


Samolus Valerandi L.

1105 - VI 1937.

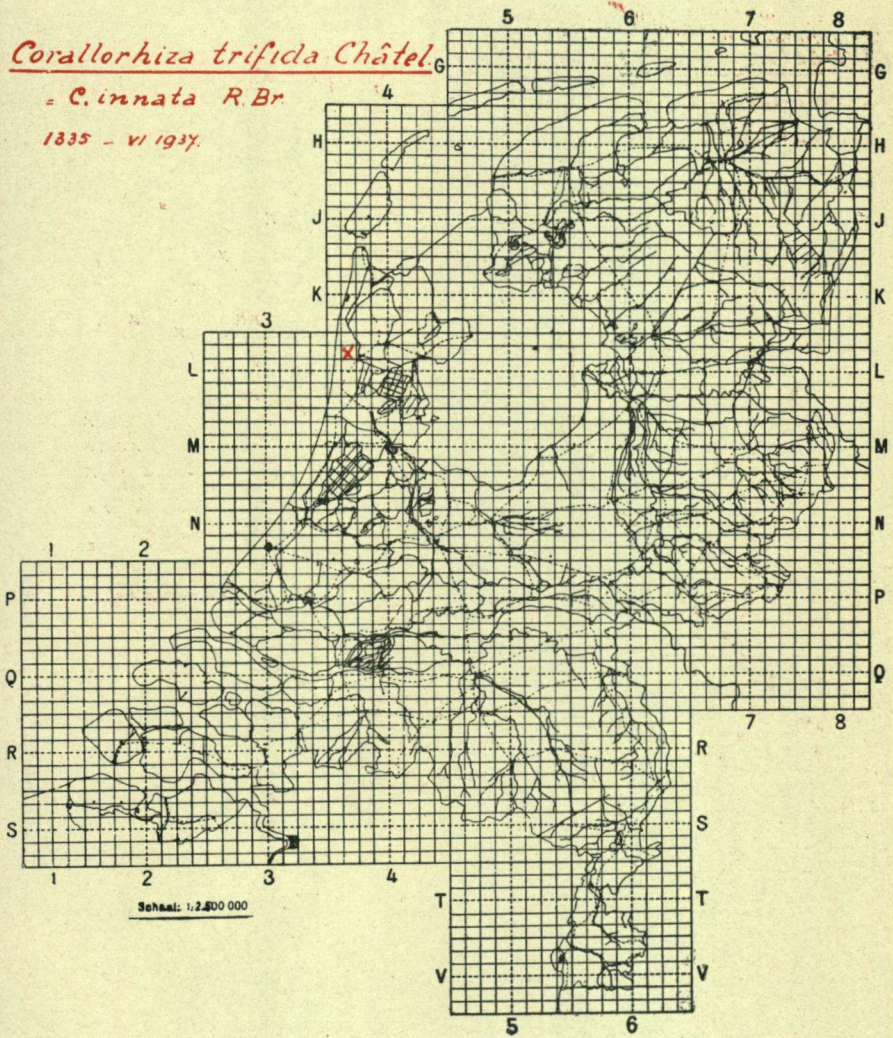


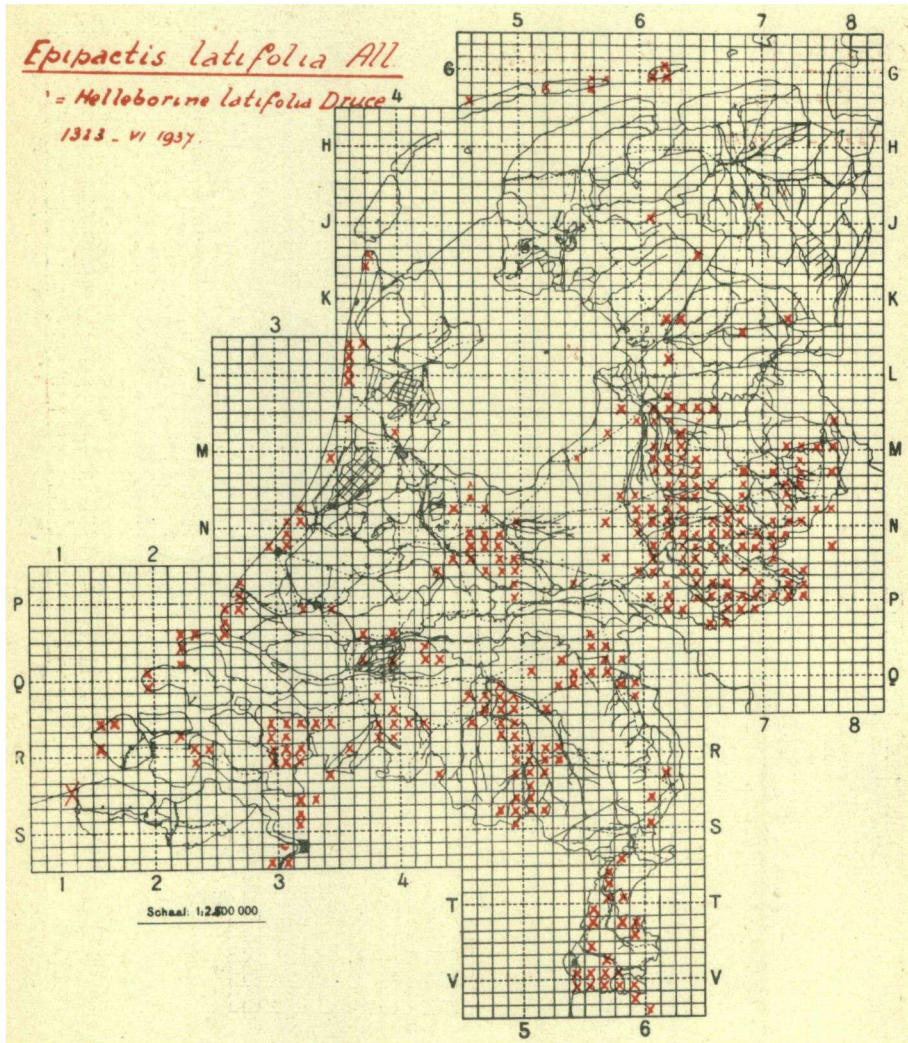


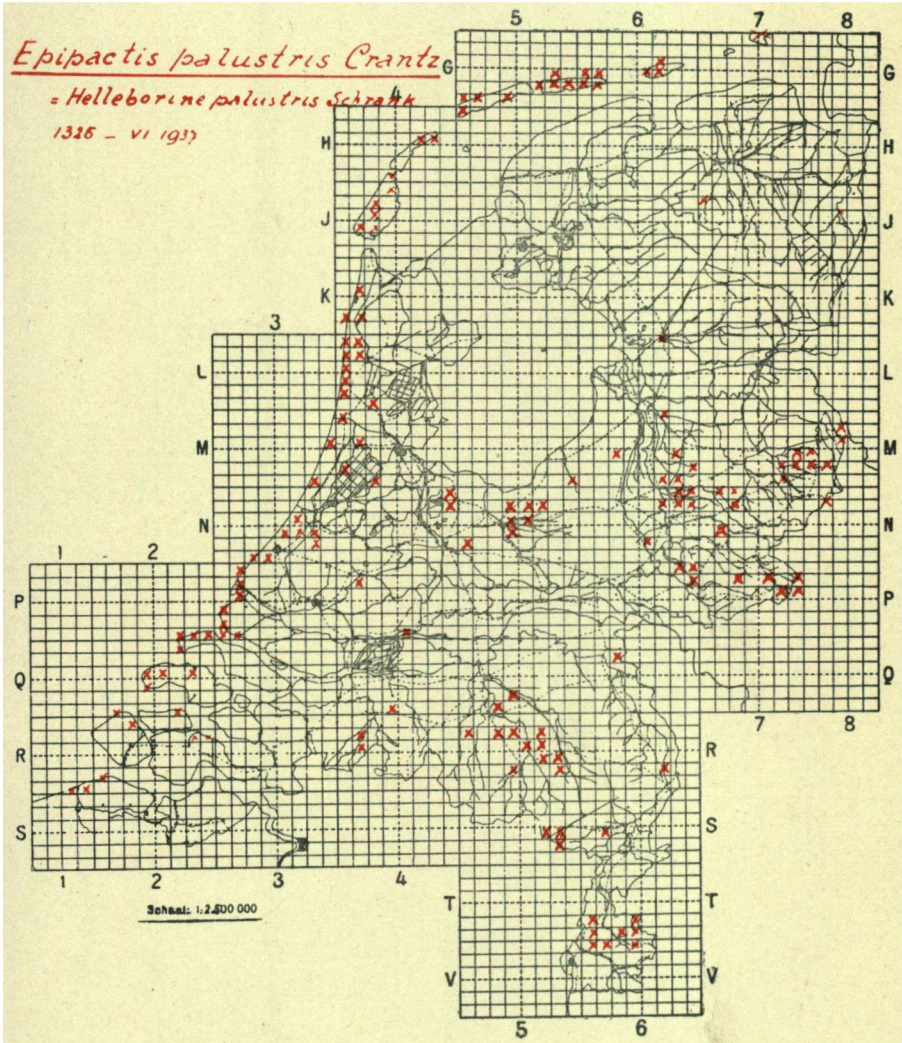


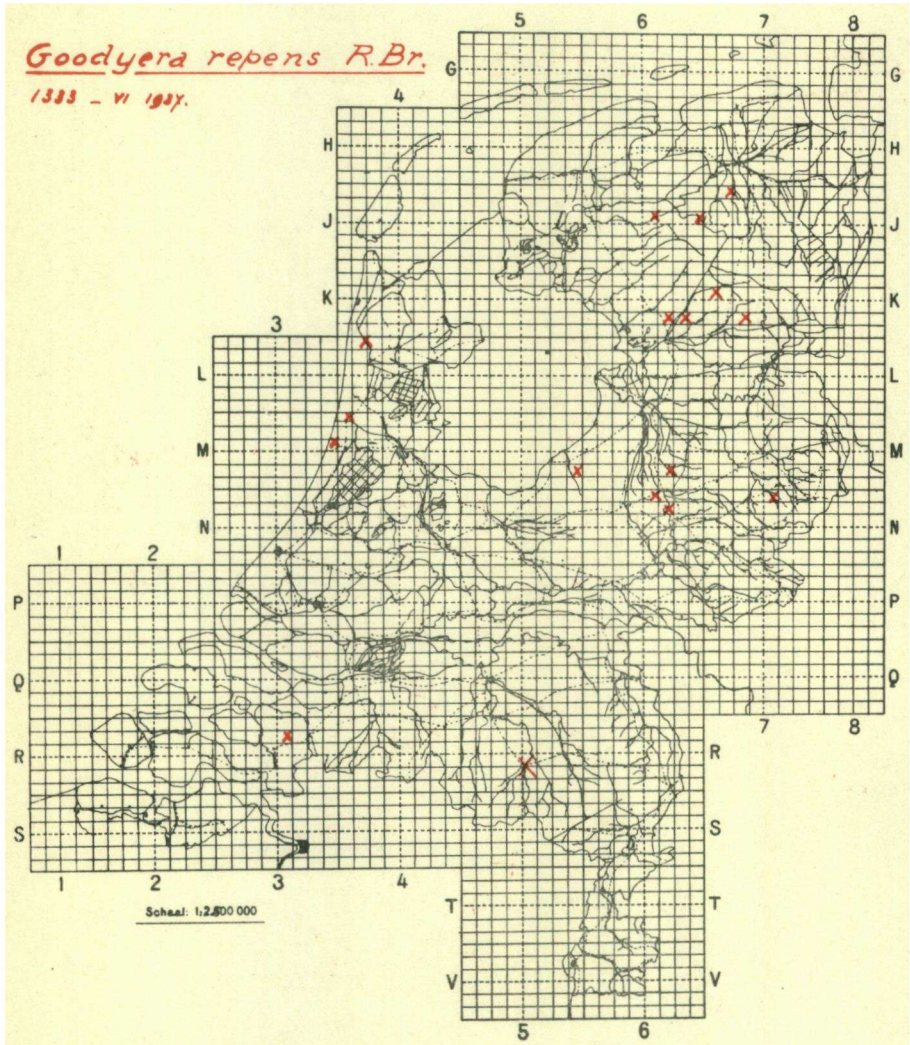
Corallorhiza trifida Châtel.= *C. innata* R.Br.

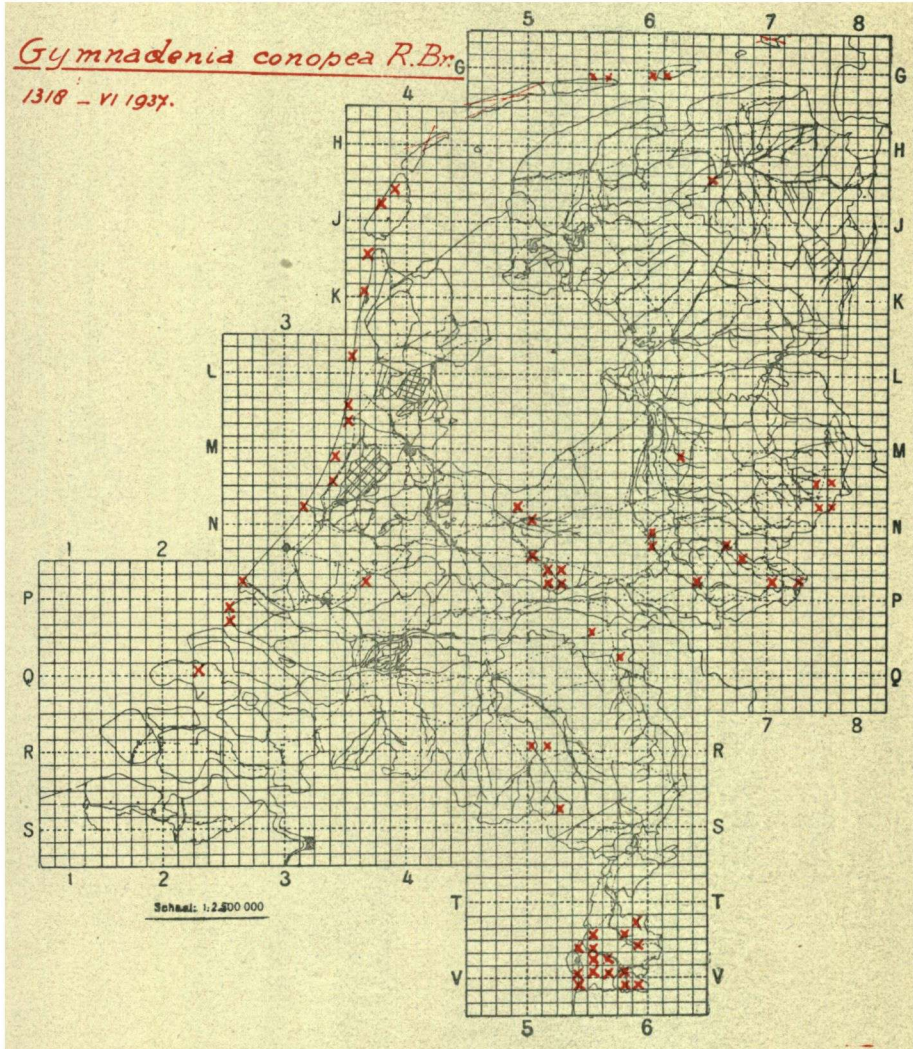
1835 - VI 1937.



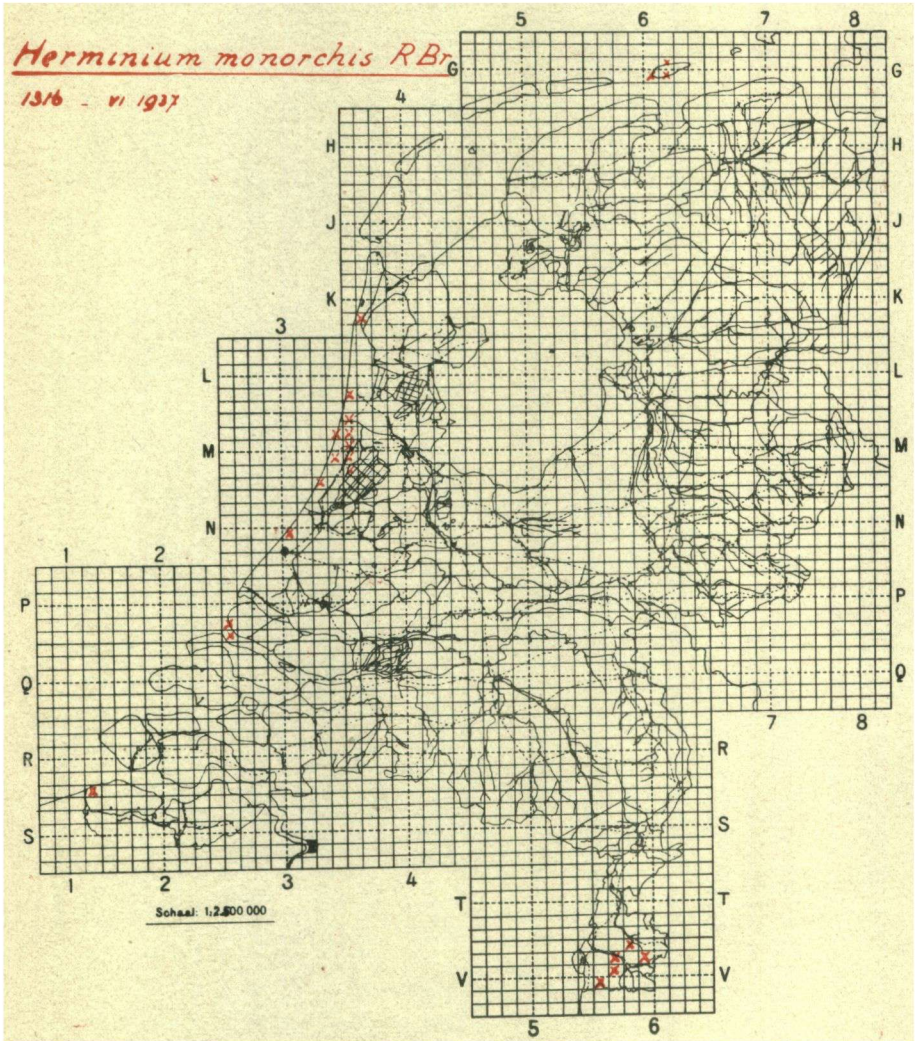


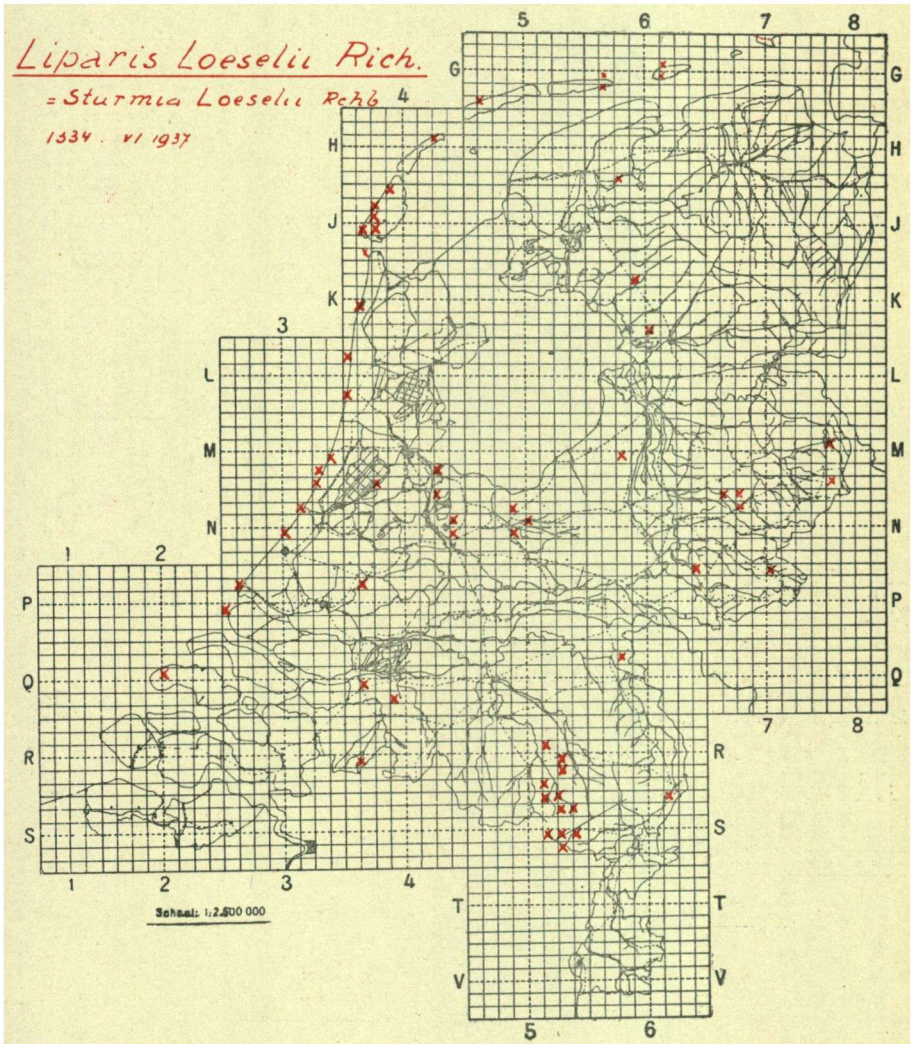


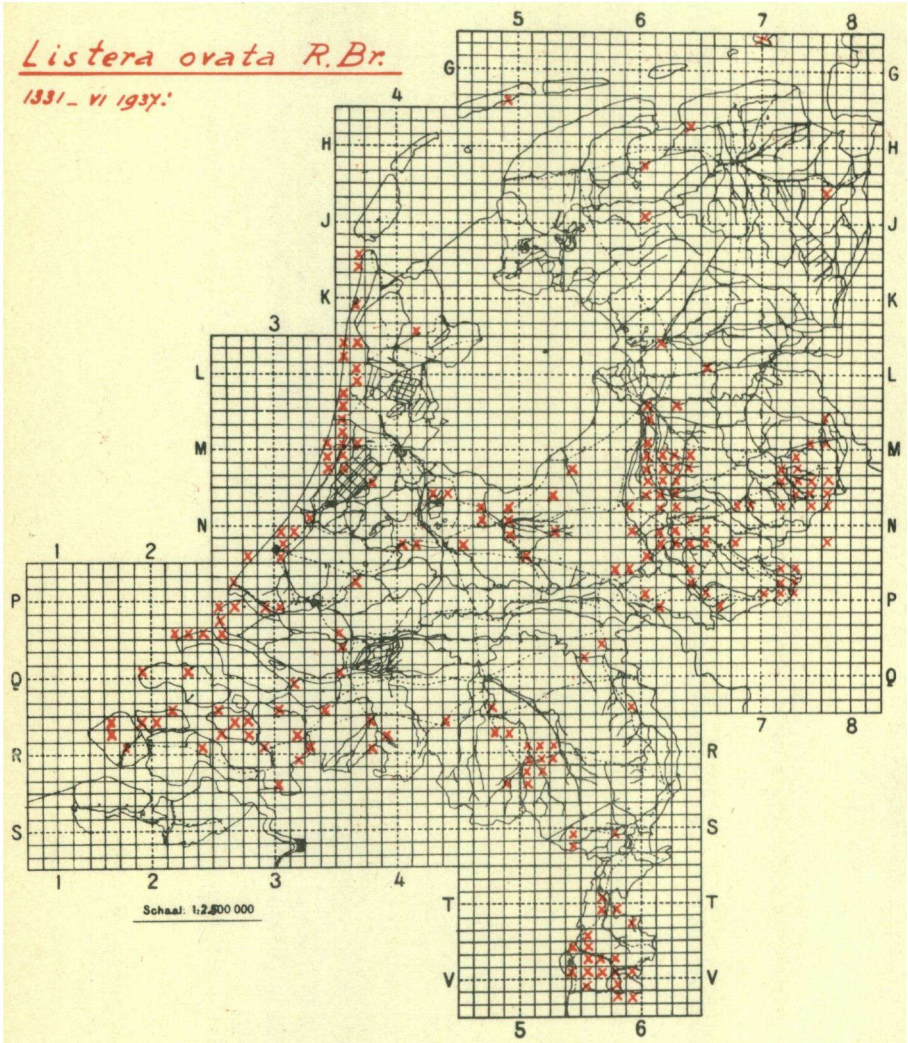


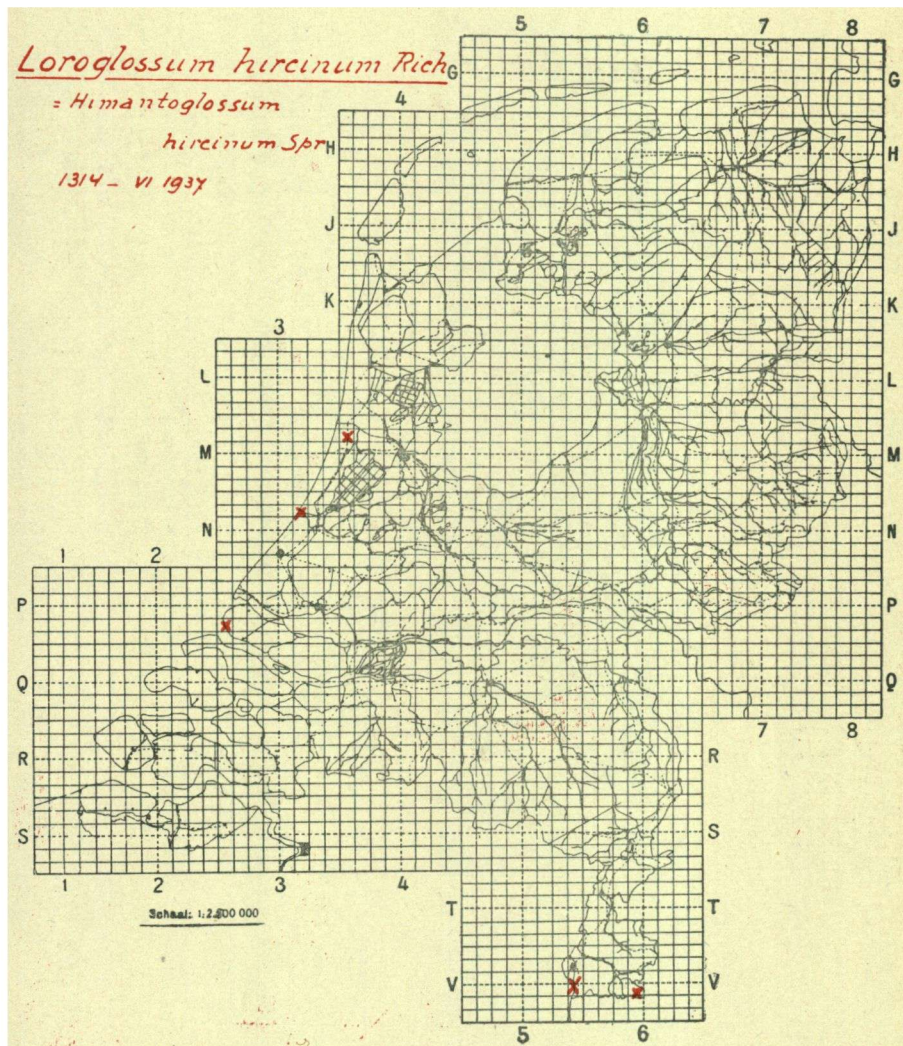


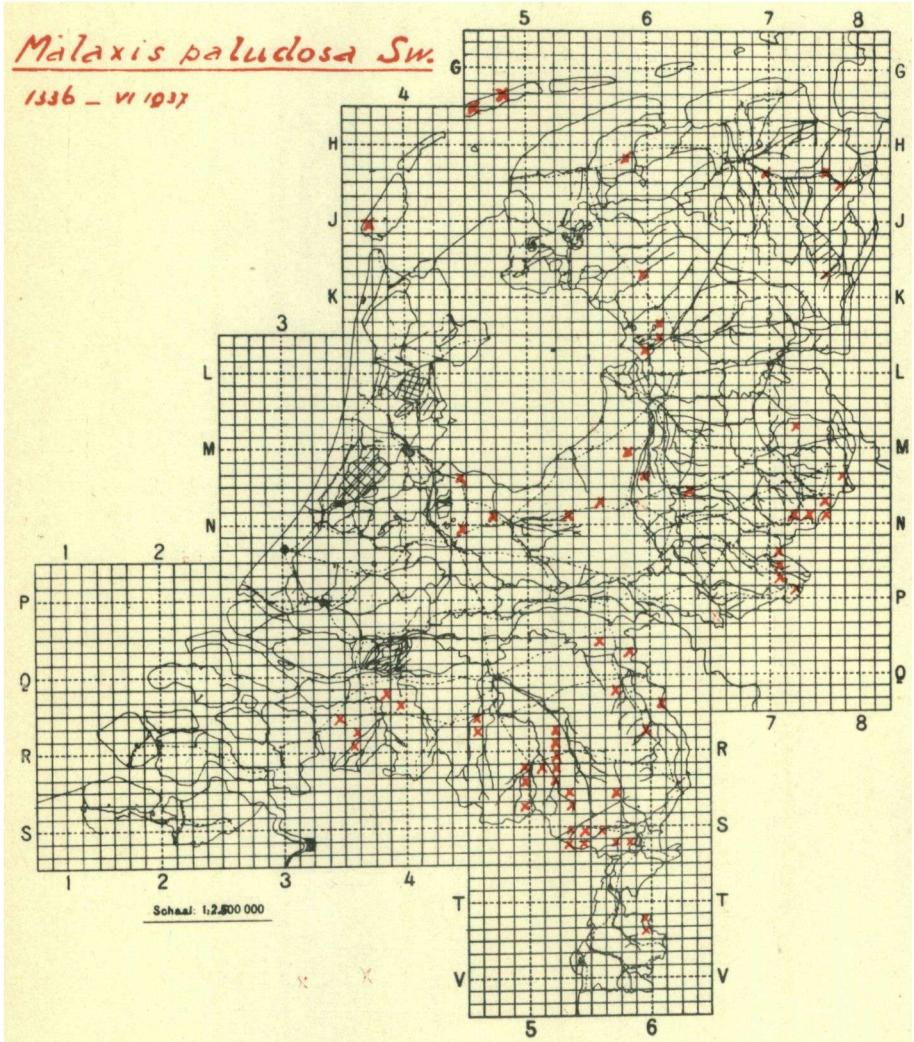
De opgaven uit het duingebied hebben betrekking op var. *densiflora* Fries.; de andere op var. *typica* Beck.

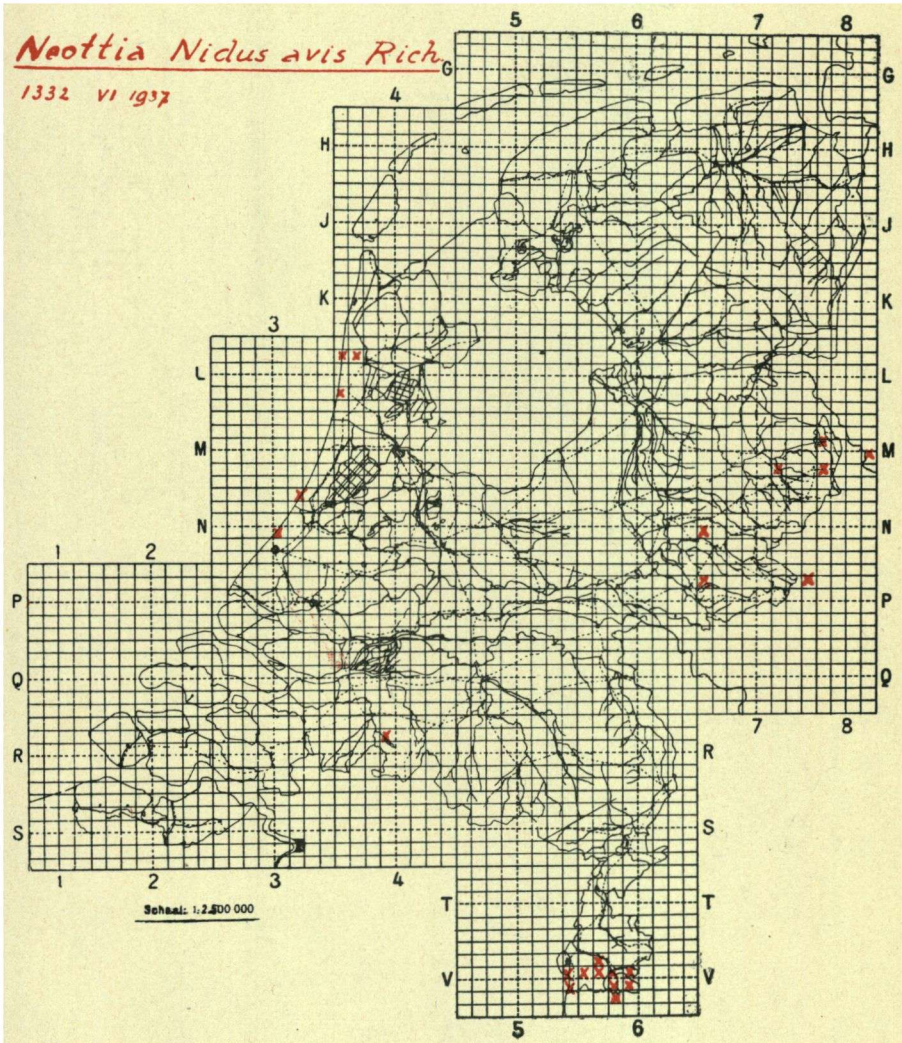






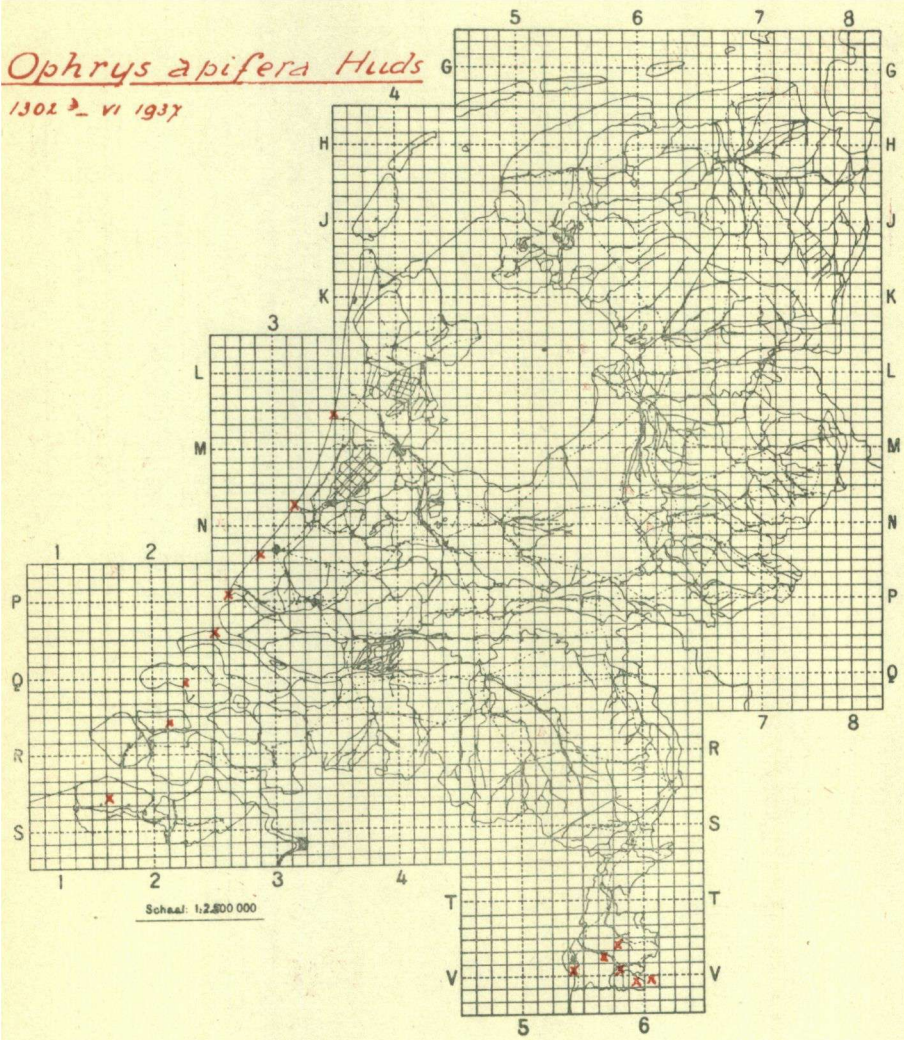


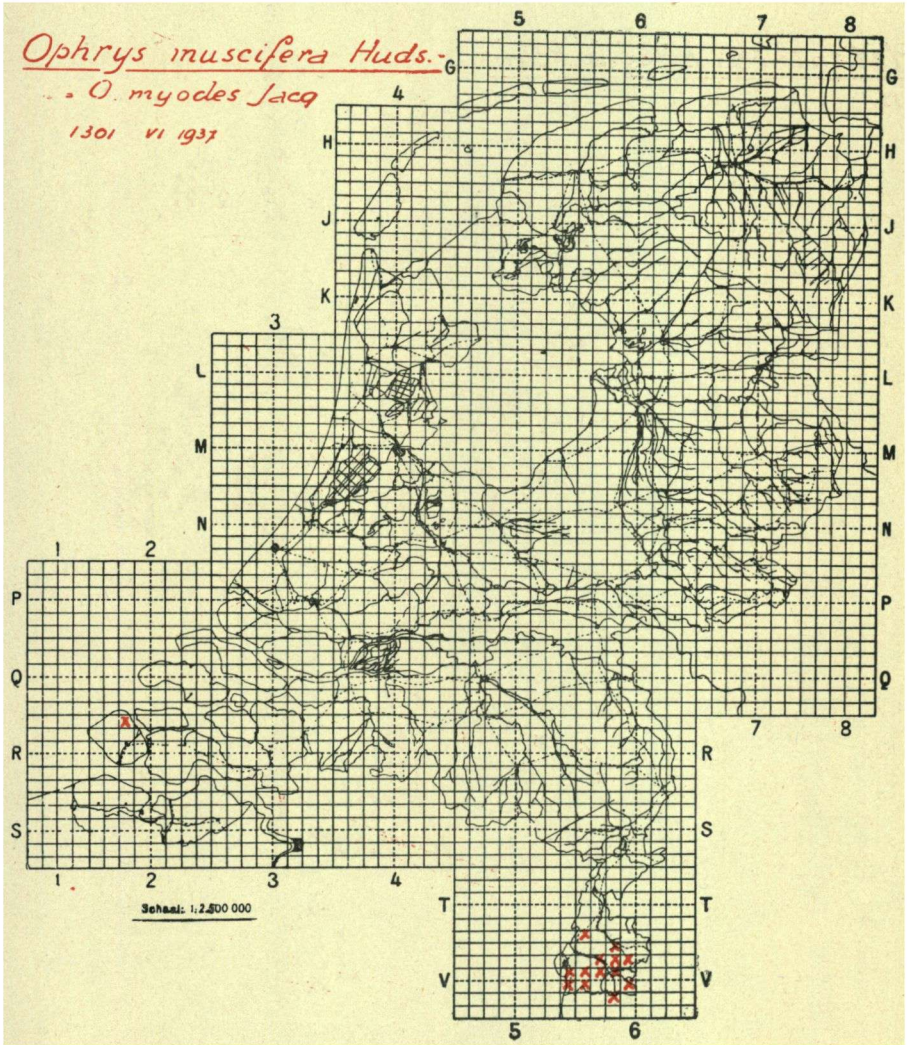




Ophrys apifera Huds

1302 ♀ - VI 1937





Platanthera bifolia Rehb.

1321 - vi 1937.

