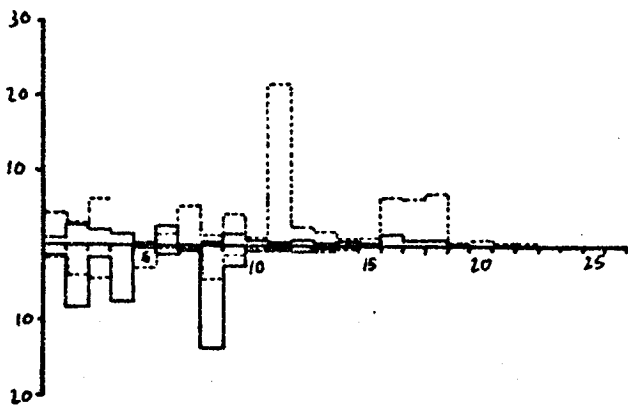
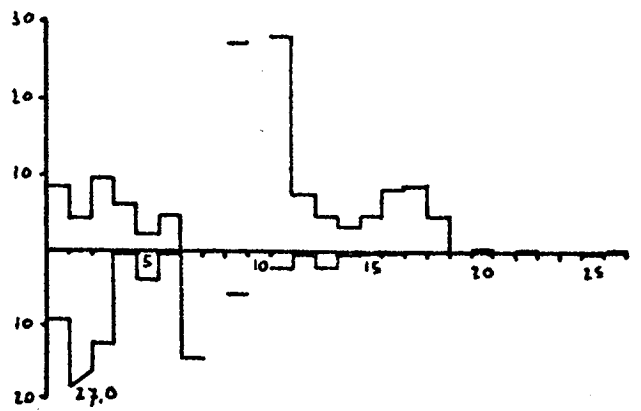


6. Uurgemiddeldes.

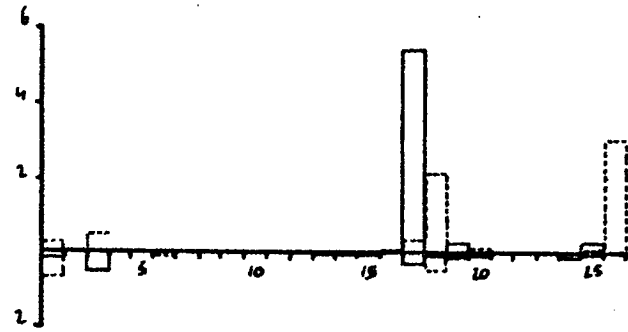
6.1. Toelichting In de volgende figuren is het uurgemiddelde per week uitgezet. In één figuur zijn steeds de Noordhollandse (-----) en Zuidhollandse (——) tesamen gegeven, voor de Wadden werd soms een aparte grafiek gemaakt (enkele getrokken lijn). Noordwaarts vliegende vogels zijn steeds boven de x-as, zuidwaarts onder de x-as gegeven.



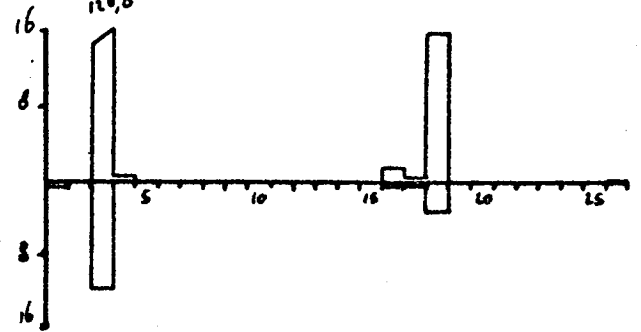
6.2. Duikers (*Gavia spec.*)



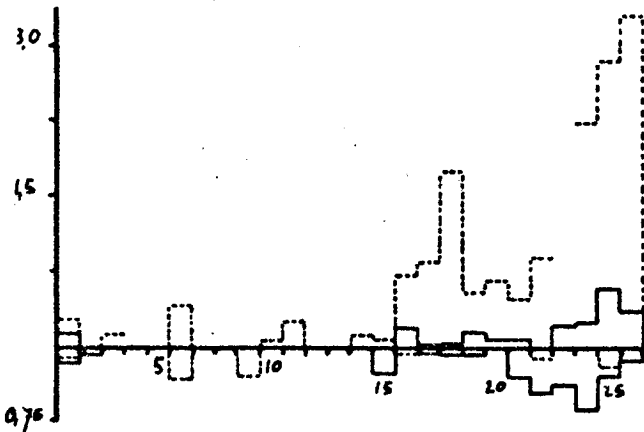
idem. Wadden



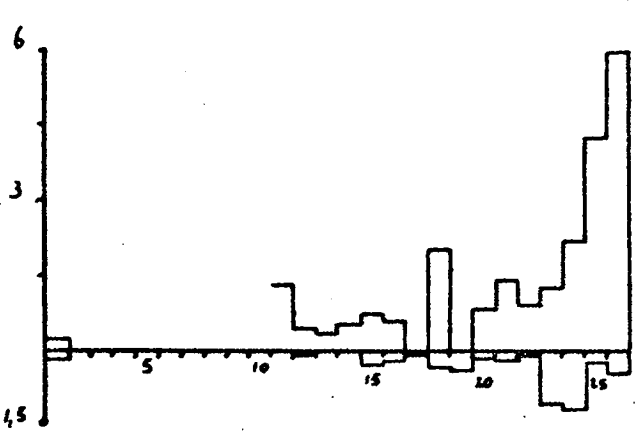
6.3. Noordse Stormv. (*Fulm. glacialis*)



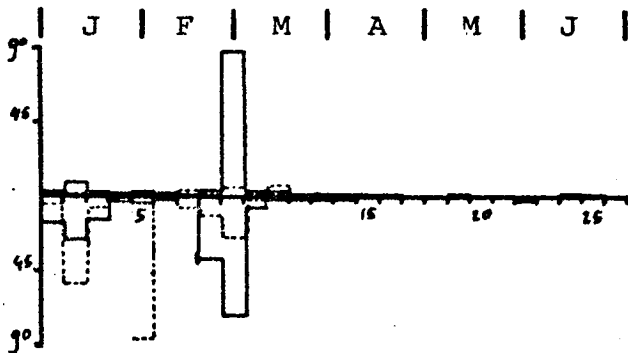
idem. Wadden



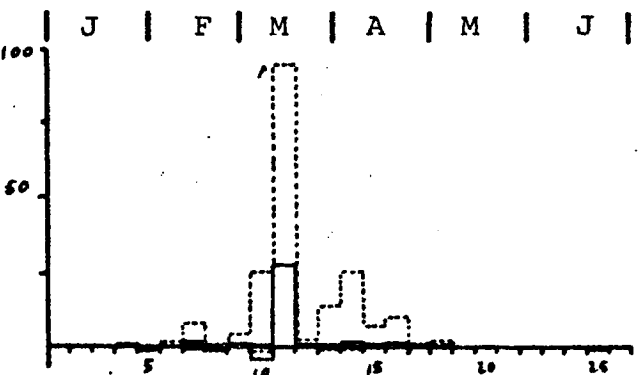
6.4. Jan van Gent (*Sula bassana*)



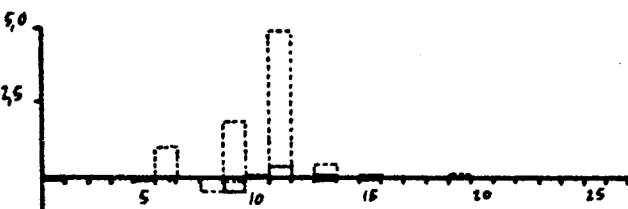
idem. Wadden



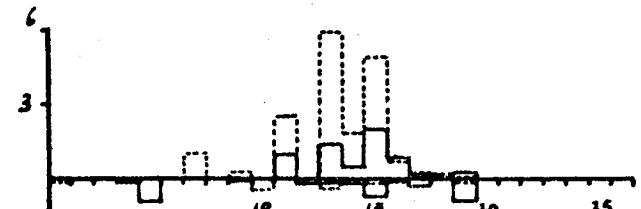
6.5. Fuut (*Podiceps cristatus*)



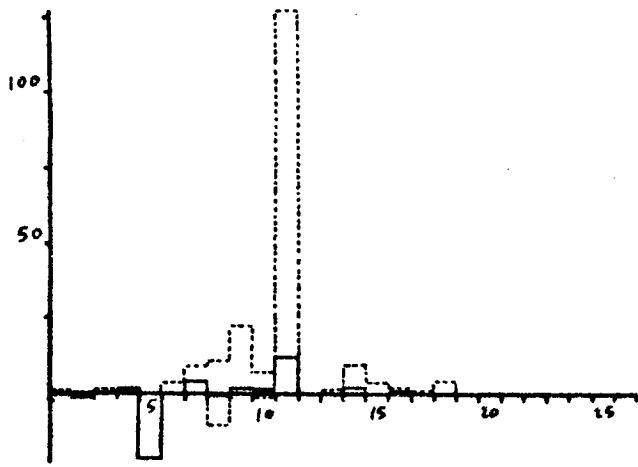
6.6. Wintertaling (*Anas crecca*)



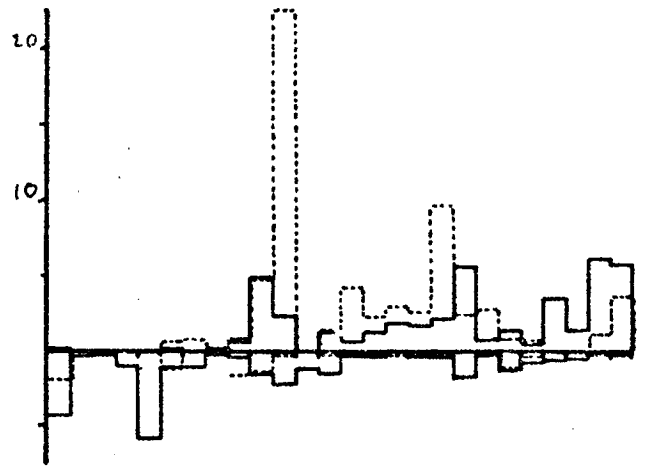
6.7. Pijlstaart (*Anas acuta*)



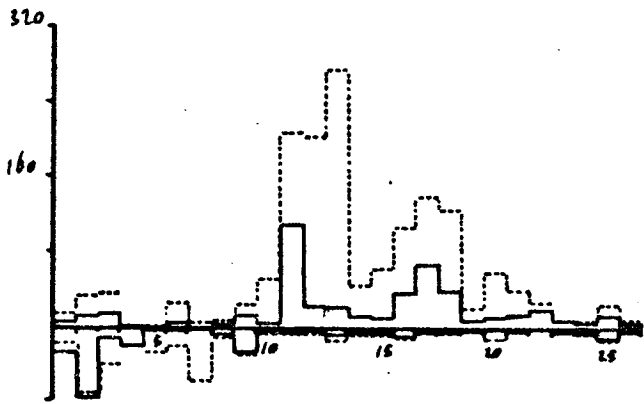
6.8. Slobeend (*Anas clypeata*)



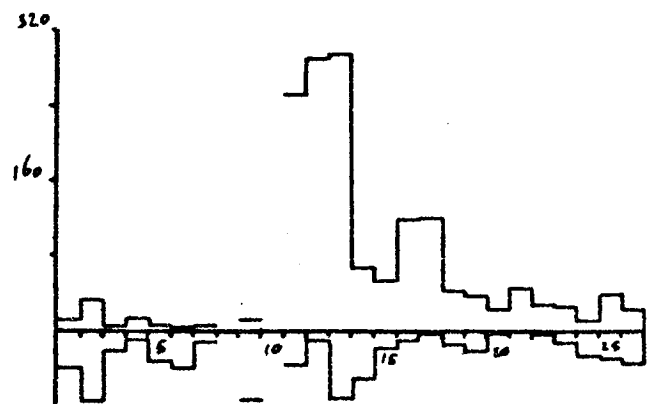
6.9. Smient (*Anas penelope*)



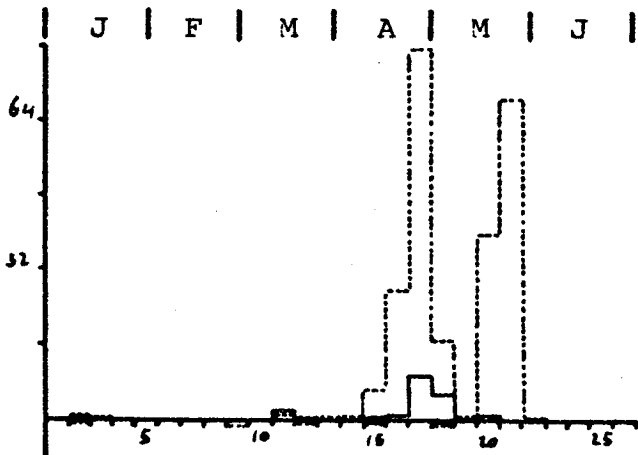
6.10. Bergeend (*Tadorna tadorna*)



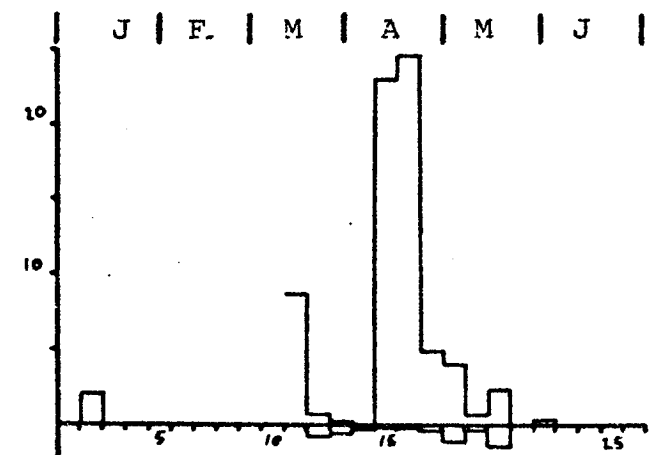
6.11. Zwarte Zeeëend (*Melanitta nigra*)



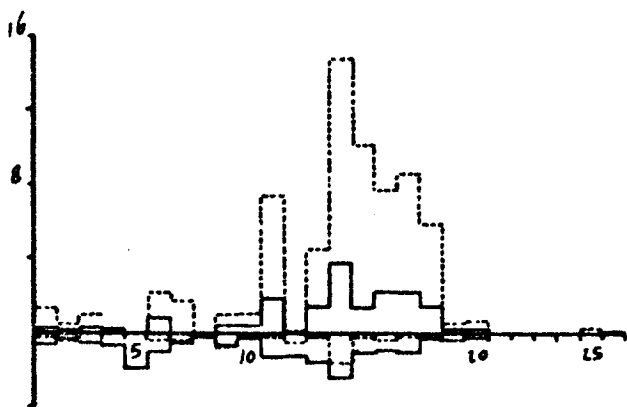
idem. Wadden



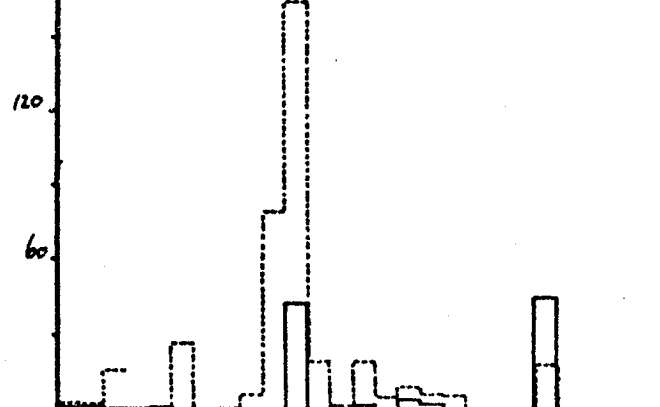
6.12. Grote Zeeëend (*Melanitta fusca*)



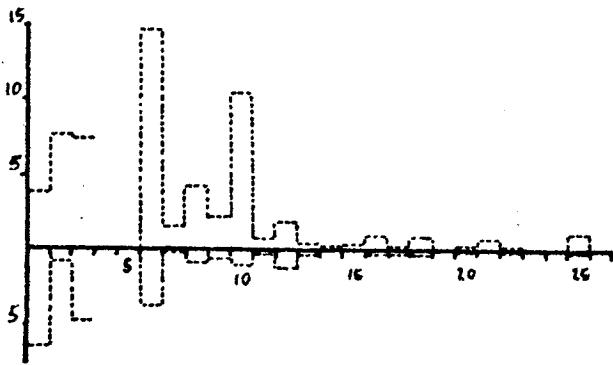
idem. Wadden



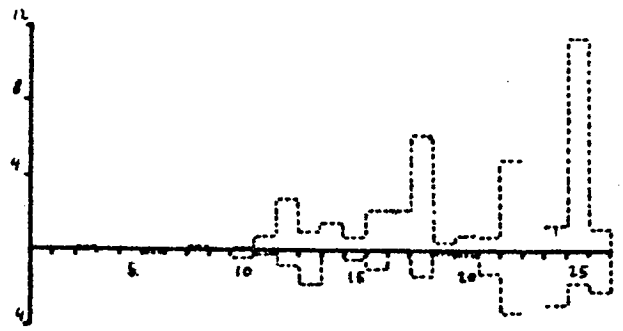
6.13. Midd. Zaagbek (*Merg. serrator*)



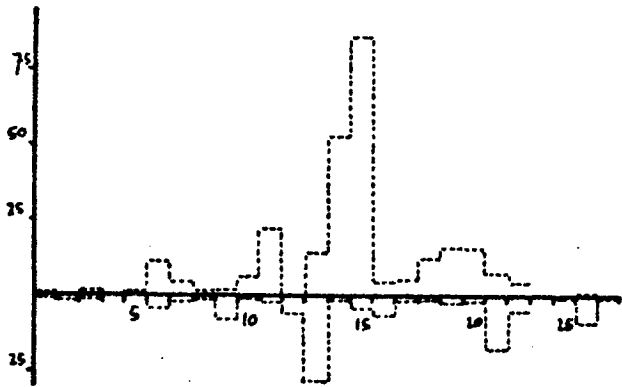
6.14. Rotgans (*Branta bernicla*)



6.15. Grote Mantelm. (*Larus marinus*)

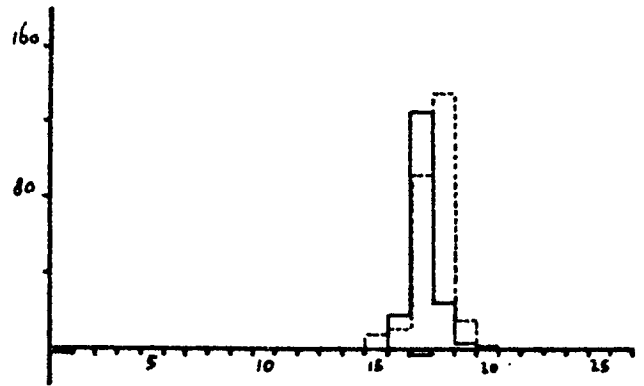


6.16. Kleine Mantelm. (*Larus fuscus*)



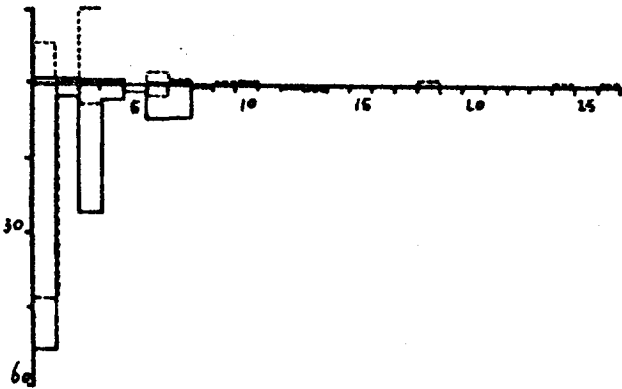
6.17. Kokmeeuw (*Larus ridibundus*)

| J | F | M | A | M | J |

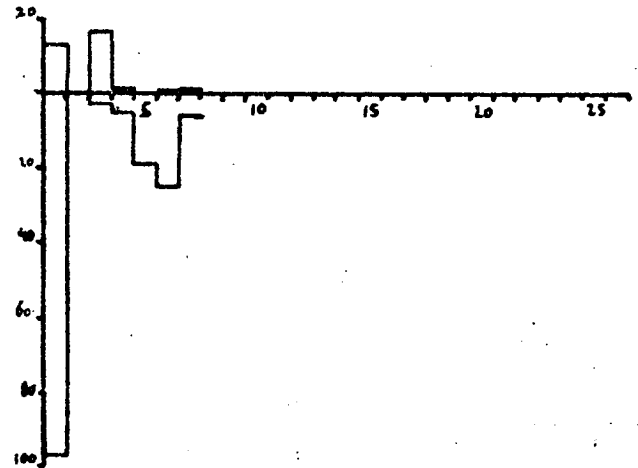


6.18. Dwergmeeuw (*Larus minutus*)

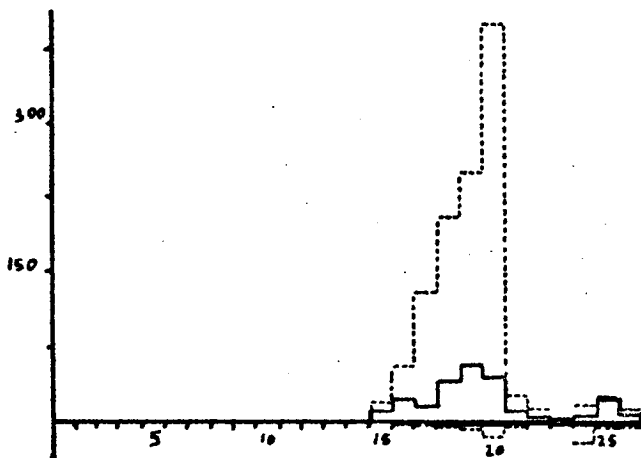
| J | F | M | A | M | J |



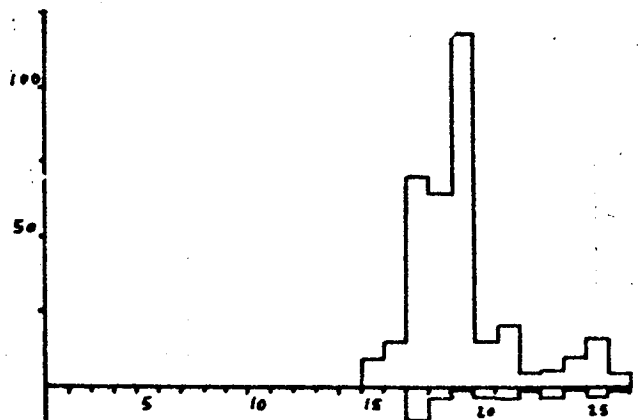
6.19. Drieteenmeeuw (*R. tridactyla*)

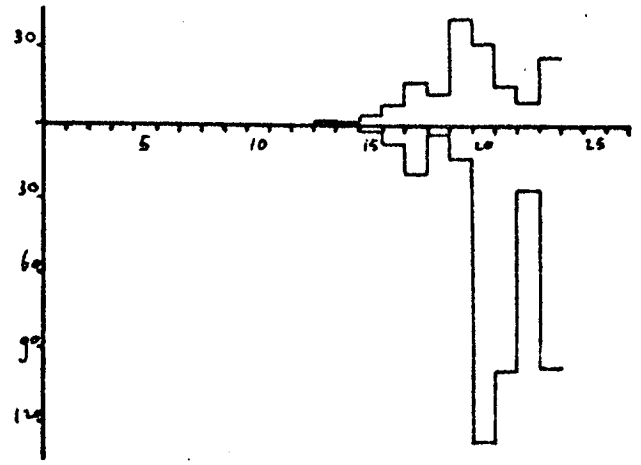
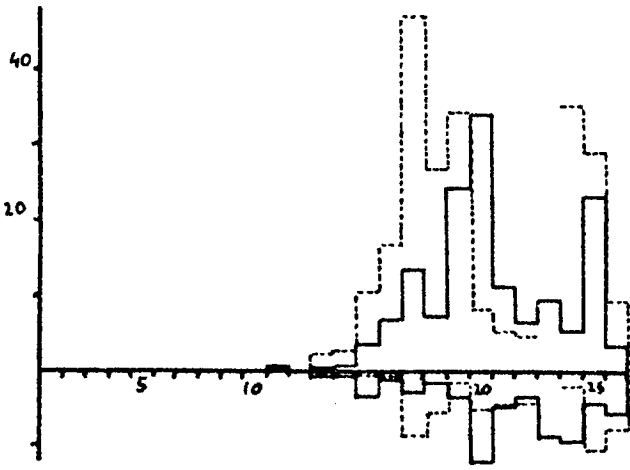


idem. Wadden

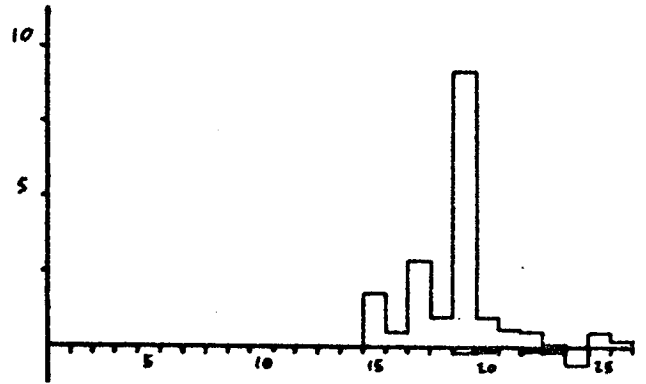
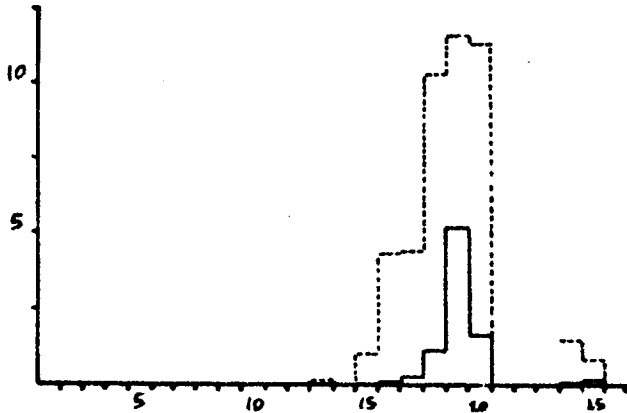


6.20. 'noordse/dief' (*S.hir./paradis.*) idem. Wadden





6.21. Grote Stern (*Sterna sandvicensis*) idem. Wadden

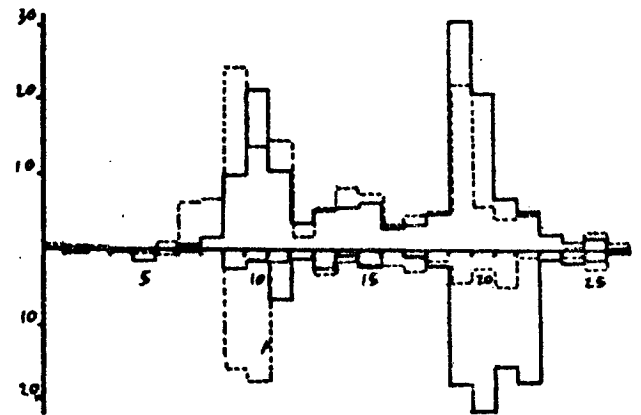
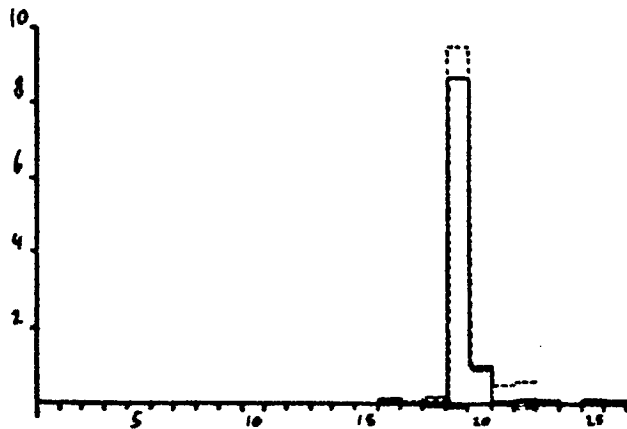


6.22. Dwergstern (*Sterna albifrons*)

idem. Wadden

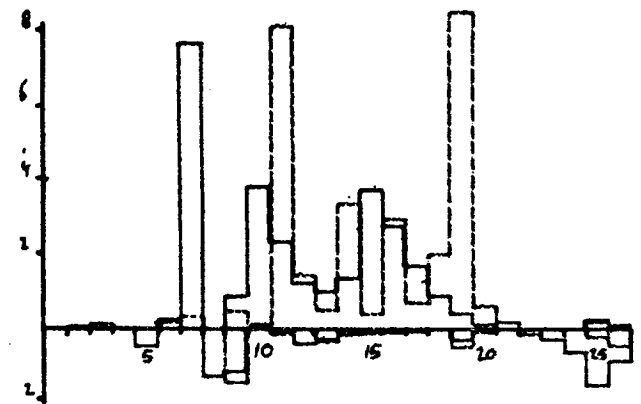
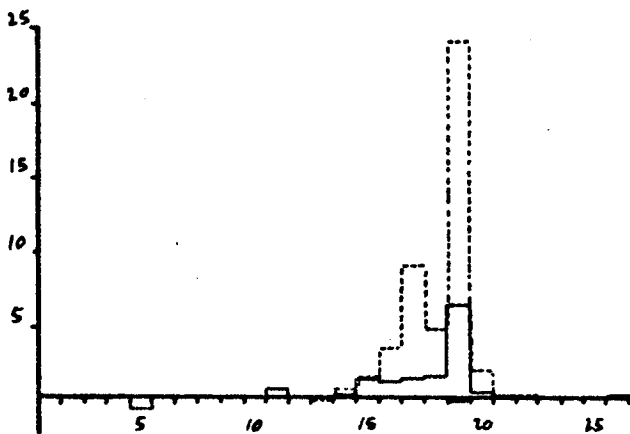
| J | F | M | A | M | J |

| J | F | M | A | M | J |



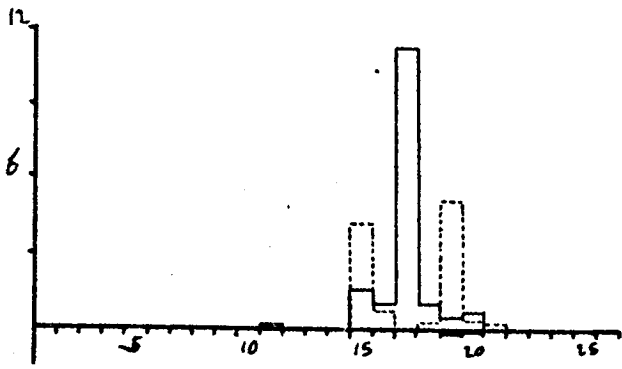
6.23. Zwarte Stern (*Chlid. niger*)

6.24. Scholekster (*Haem. ostralegus*)

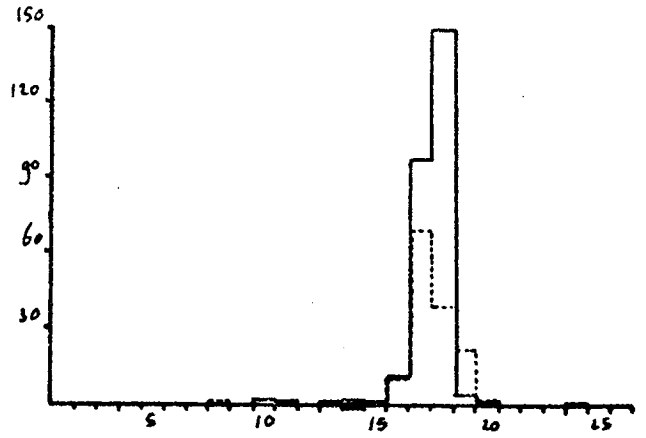


6.25. Zilverplevier (*Pl. squaterola*)

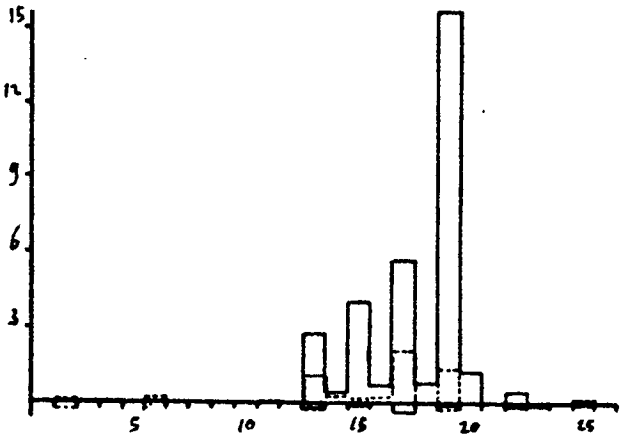
6.26. Wulp (*Numenius arquata*)



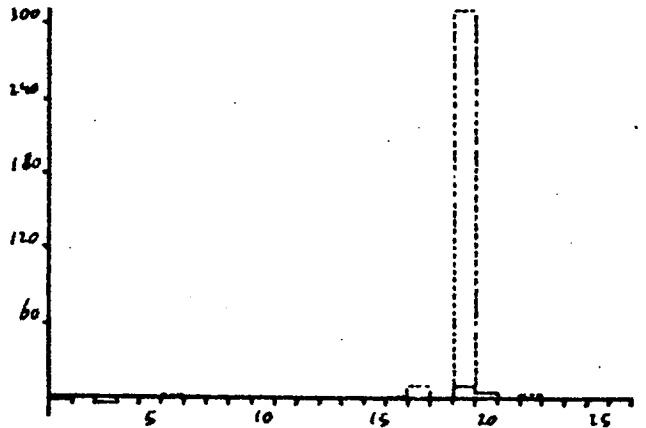
6.27. Regenwulp (*Numenius phaeopus*)



6.28. Rosse Grutto (*Lim. lapponica*)

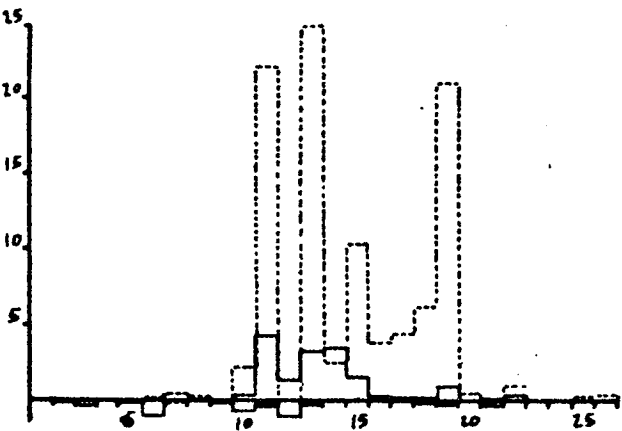


6.29. Tureluur (*Tringa totanus*)



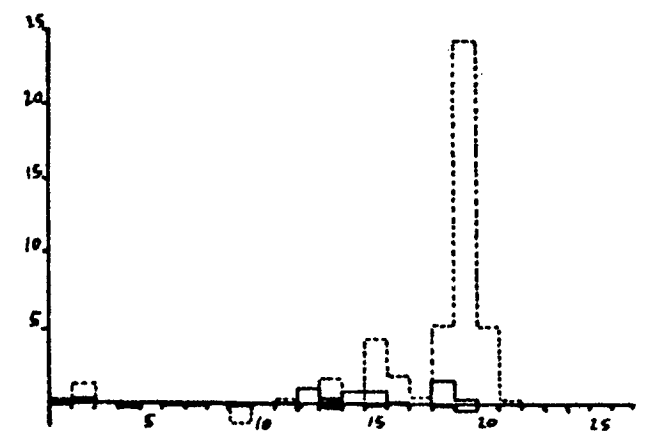
6.30. Kanoetstrl. (*Calidris canutus*)

| J | F | M | A | M | J |

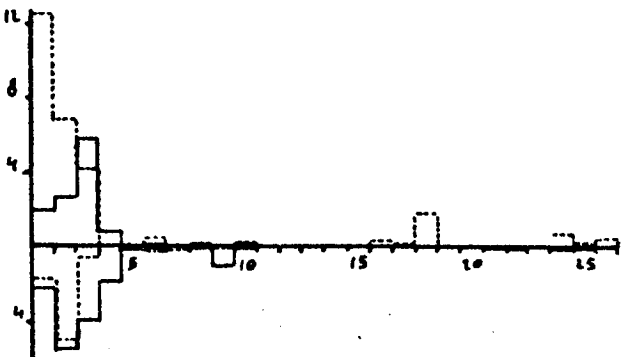


6.31. Bonte Strl. (*Calidris alpina*)

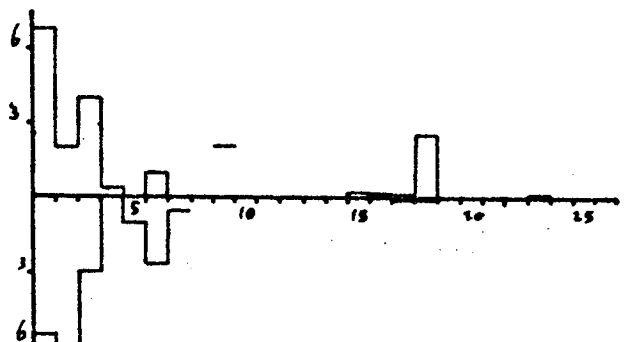
| J | F | M | A | M | J |



6.32. Drieteenstrl. (*Calidris alba*)



6.33. 'alk/zeekoet' (*U.aalge/A.torda*)



idem. Wadden