

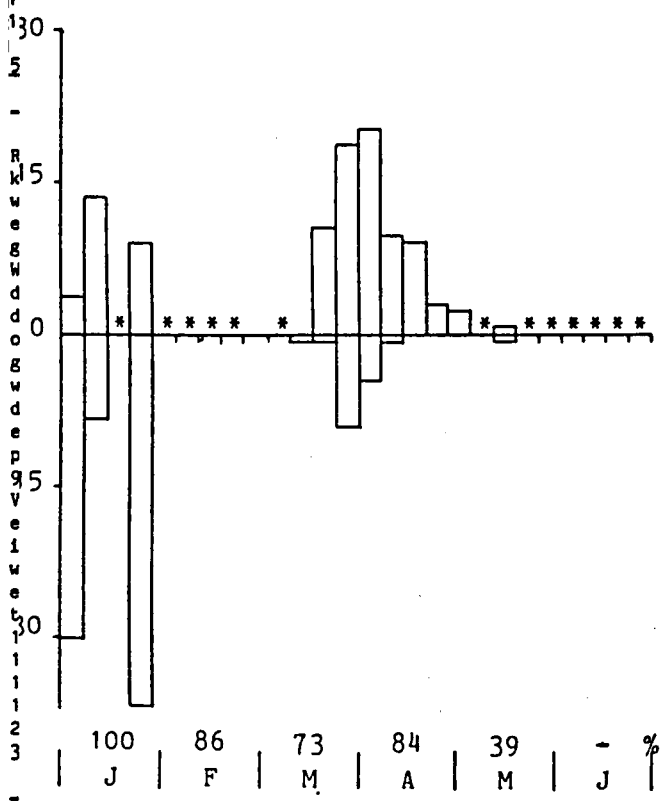
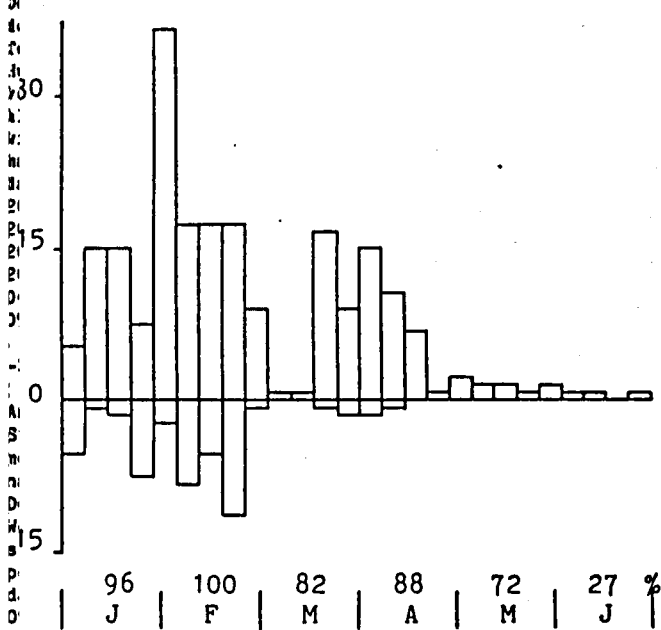
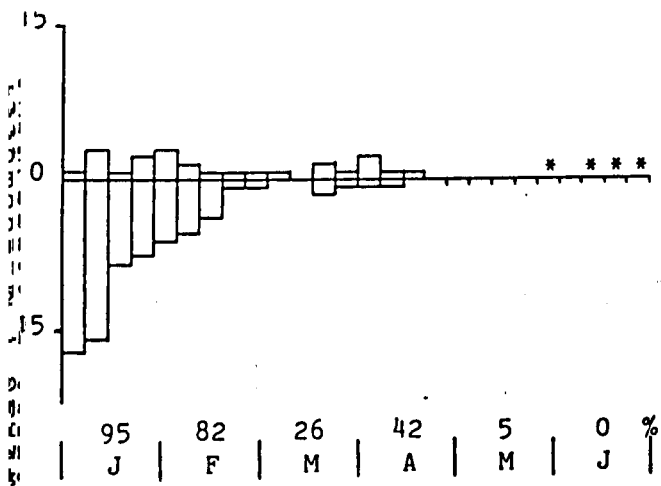
6. De uurgemiddelde-grafieken.

In de volgende figuren is het uurgemiddelde per 7-daagse periode per deelgebied uitgezet. Hierbij is het uurgemiddelde van de N(O)-waarts vliegende vogels boven de abscis uitgezet, dat van de Z(W)-waarts vliegende vogels onder de abscis. Van alle soorten zijn de uurgemiddelden van alle 3 de deelgebieden gegeven (ZH, NH en WD als volgt: boven, midden en onder). Perioden, waarin 5 of minder uur geteld is, zijn aangegeven met *.

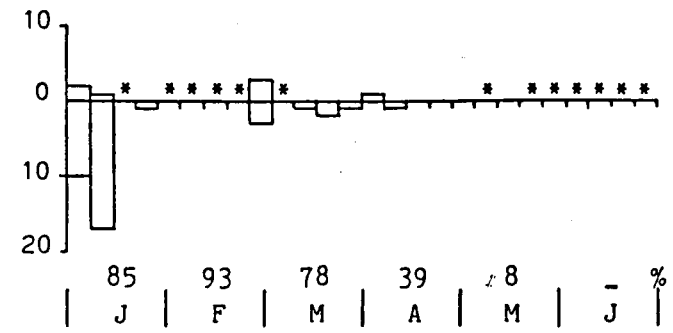
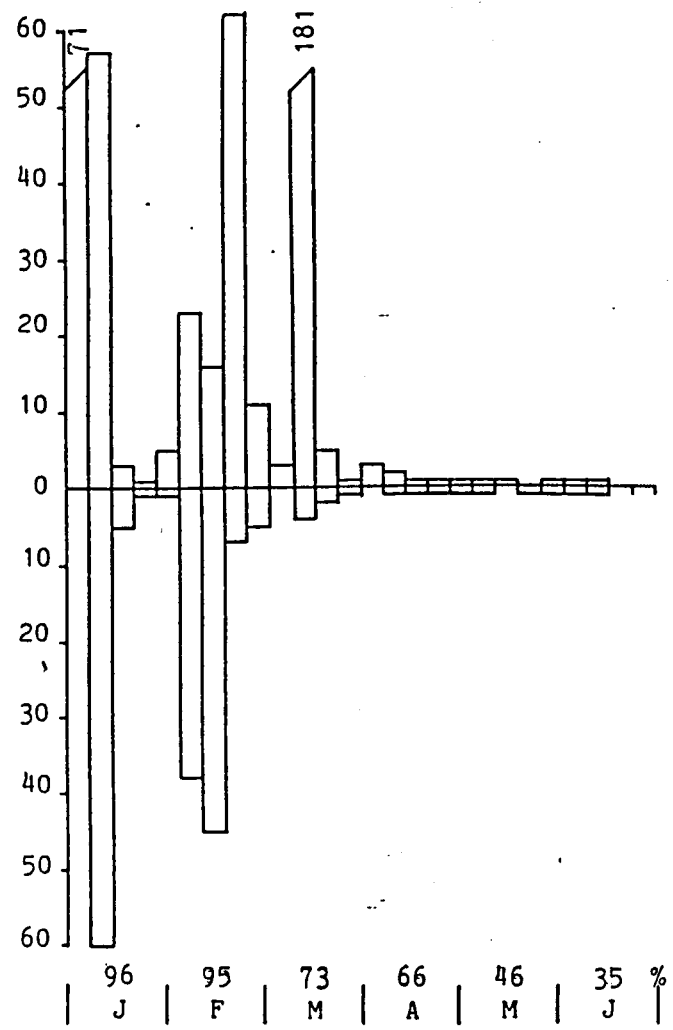
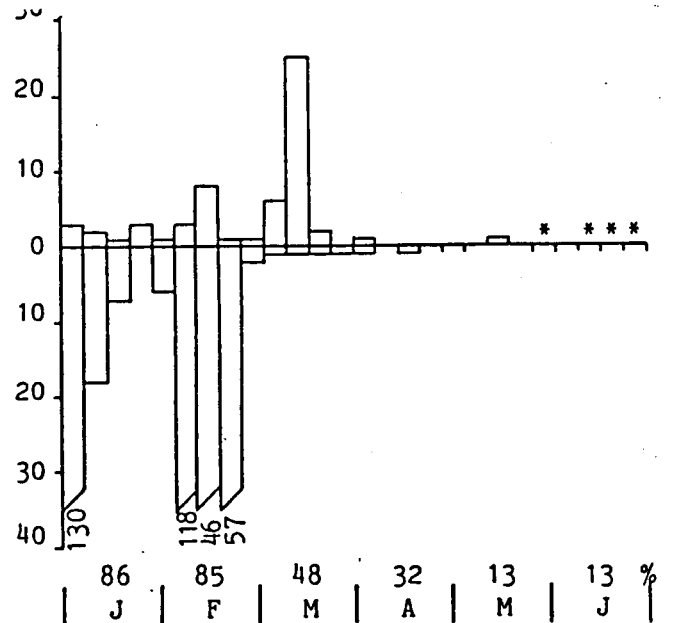
Onder alle figuren is per deelgebied het procentiepercentage per maand vermeld. Hierbij is het aantal uren, waarin de soort werd waargenomen, uitgedrukt als percentage van het totaal aantal waarnemingsuren in die maand.

In the figures, the mean numbers of birds per hour per 7-day period are given for each coastal region. In these, the mean numbers of birds flying N(E)-wards are plotted above the abscis, while the mean numbers of birds flying S(W)-wards are plotted below the abscis. For all species the mean numbers are given for all 3 regions (ZH, NH en WD) as follows: upper, medium and lower. 7-Day periods, in which 5 or less observation-hours were available, are marked with *.

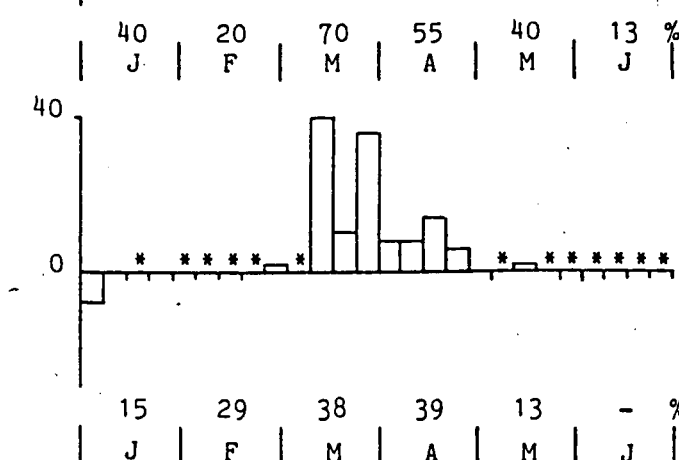
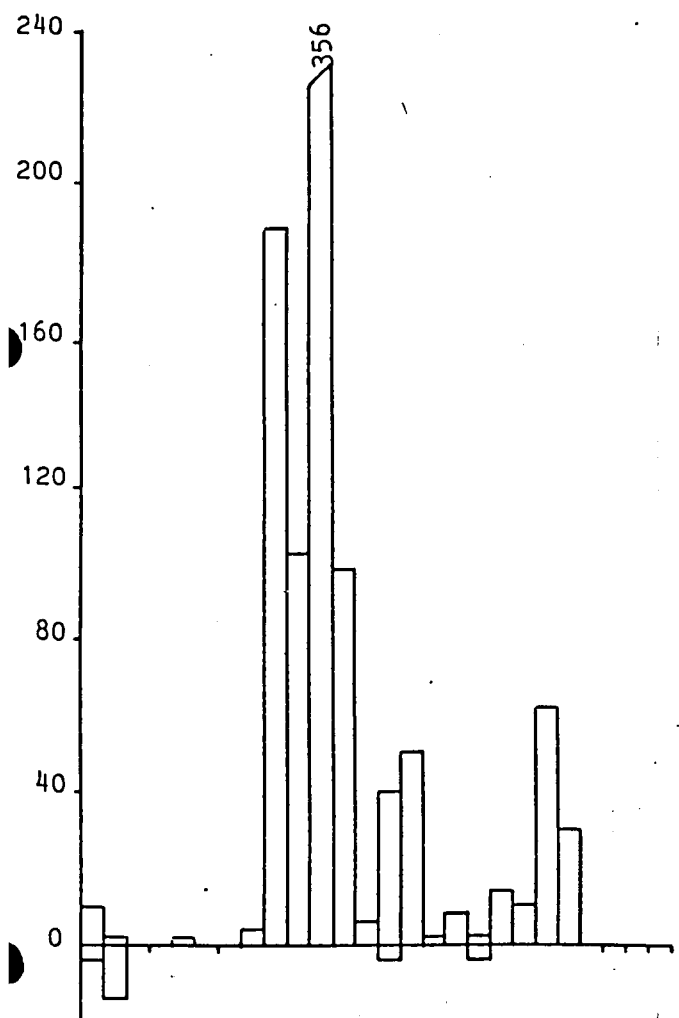
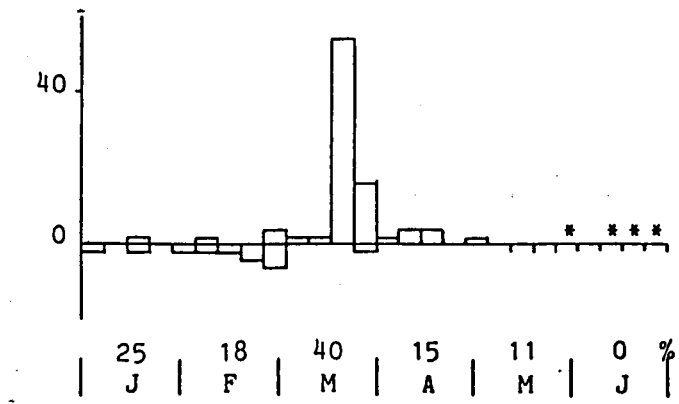
Below each figure the percentages of presence are given for each month. These were obtained by dividing the number of hours in which a certain species was seen during a certain month by the total number of observation-hours in that particular month in that particular region. Thus this value gives an indication of the chances of seeing that particular species in that particular month in that particular coastal region.



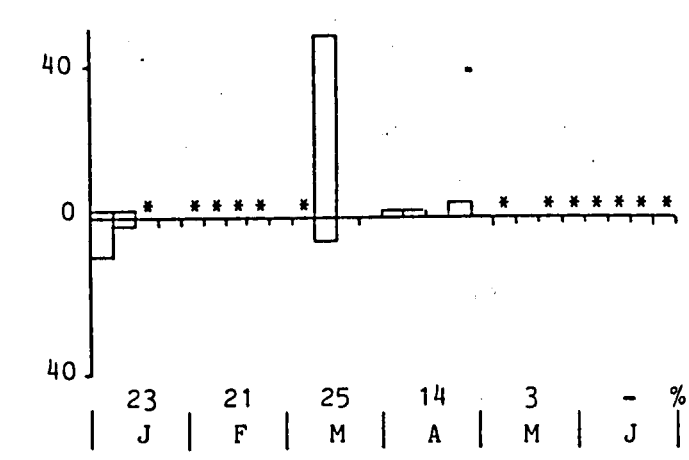
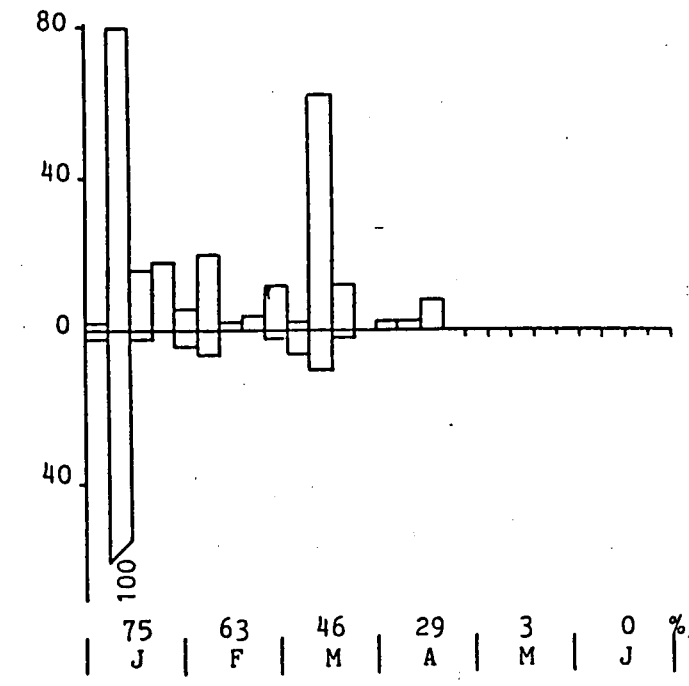
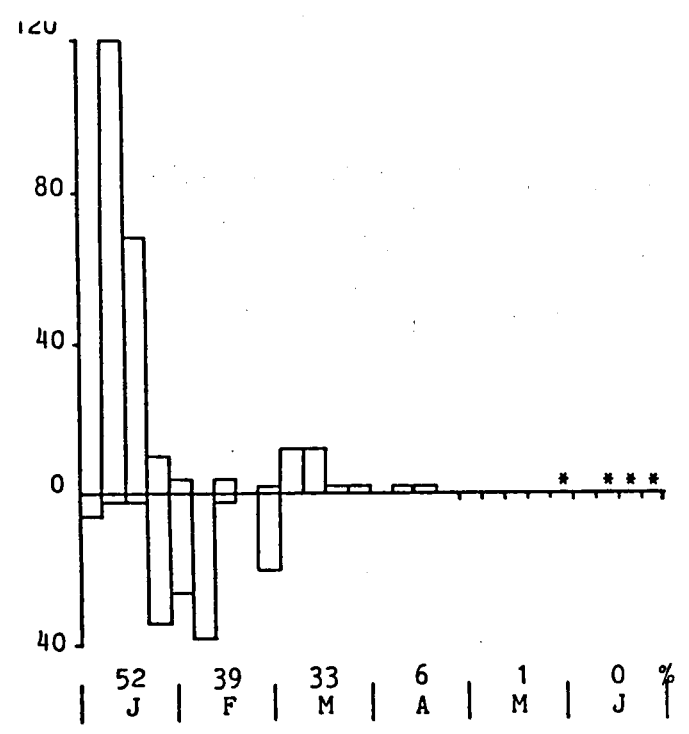
Roodkeel/Parelduiker - *Gavia stellata/arctica*
 a. Zuid Holland & IJmuiden
 b. Noord Holland
 c. Waddengebied



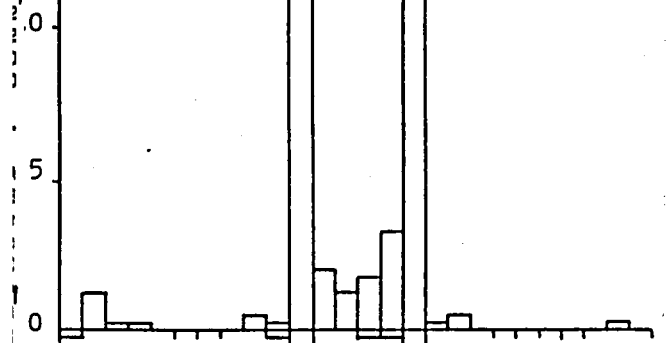
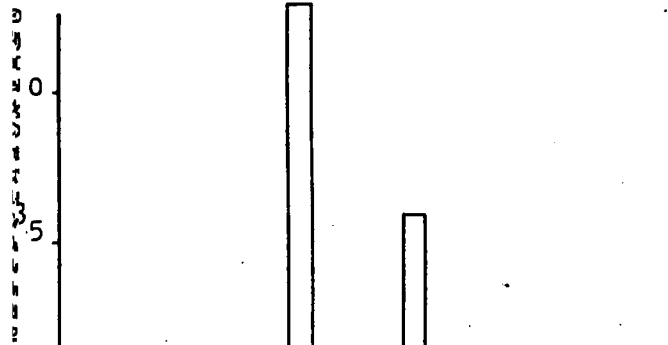
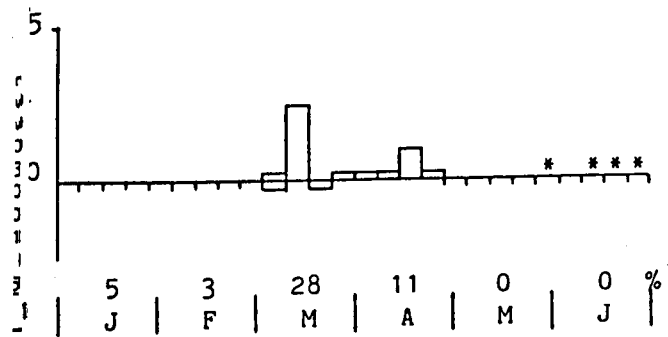
Fuut - *Podiceps cristatus*
 a. Zuid Holland & IJmuiden
 b. Noord Holland
 c. Waddengebied



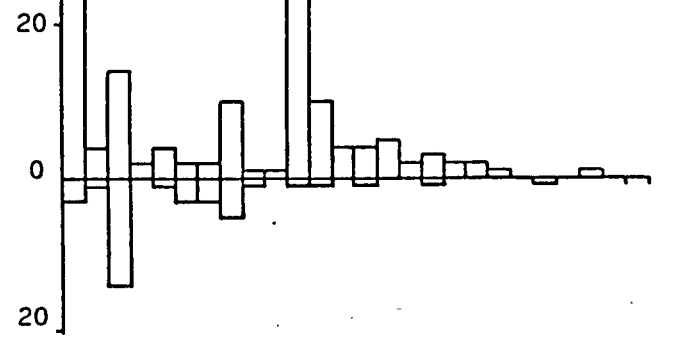
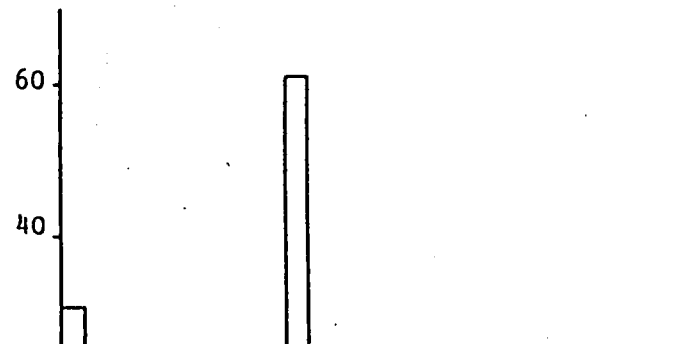
Rotgans - *Branta bernicla*
 a. Zuid Holland & IJmuiden
 b. Noord Holland
 c. Waddengebied



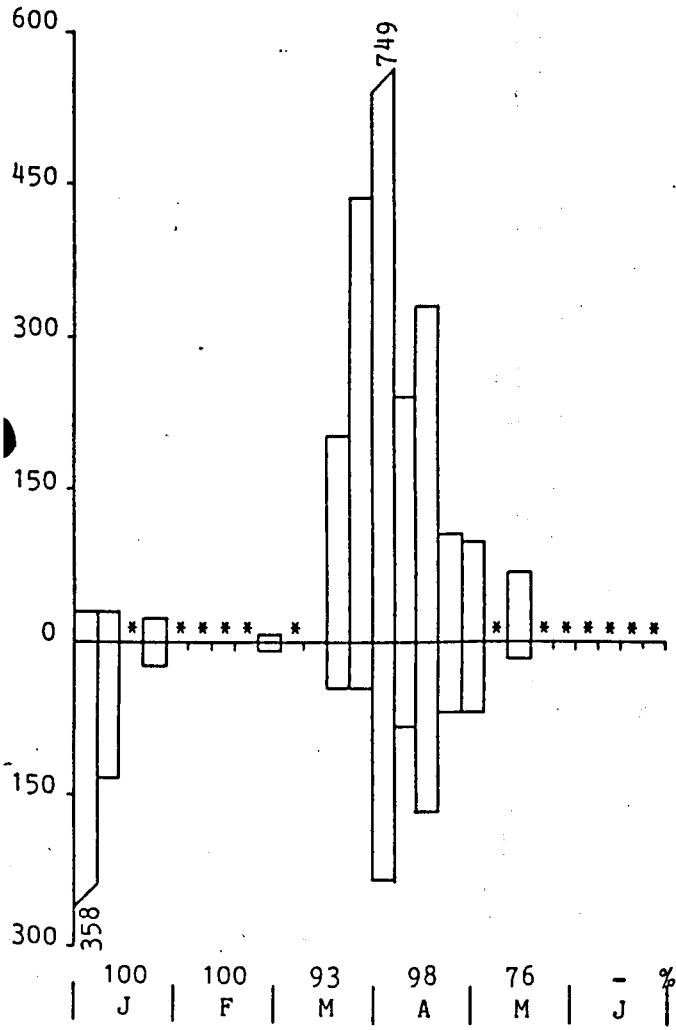
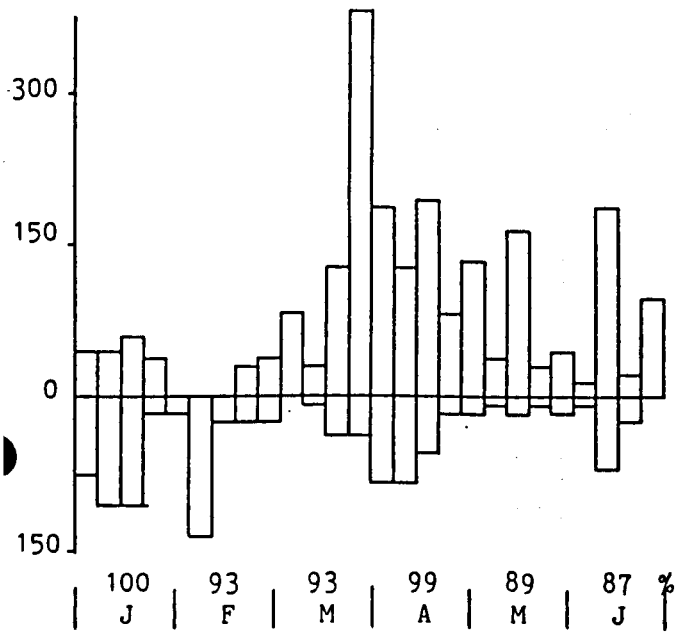
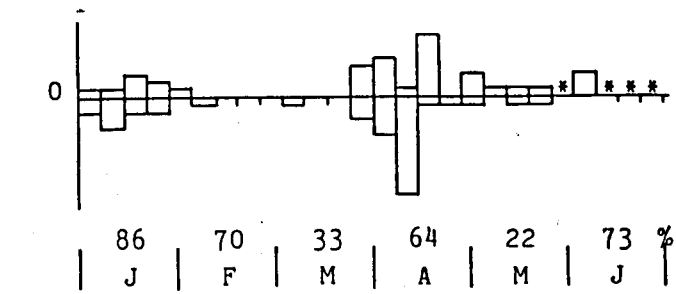
Smient - *Anas penelope*
 a. Zuid Holland & IJmuiden
 b. Noord Holland
 c. Waddengebied



Wintertaling - *Anas crecca*
 a. Zuid Holland & IJmuiden
 b. Noord Holland
 c. Waddengebied

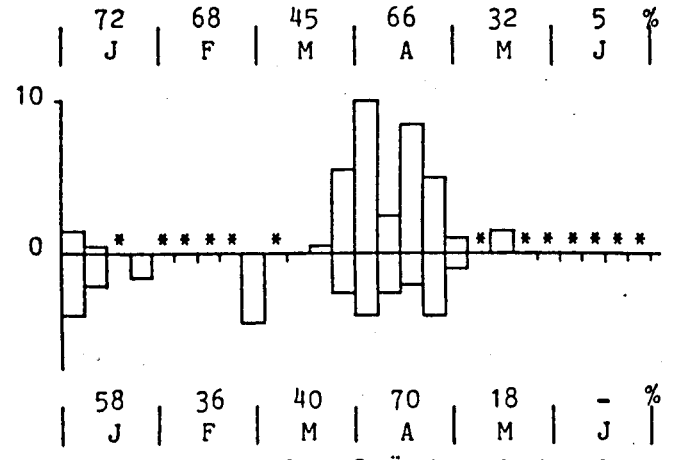
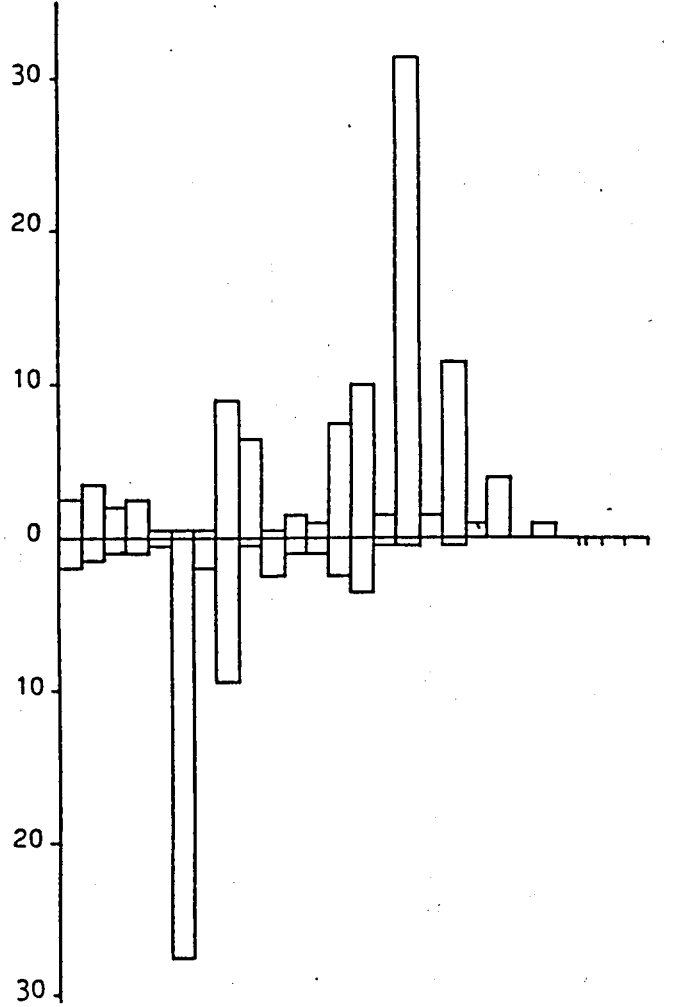
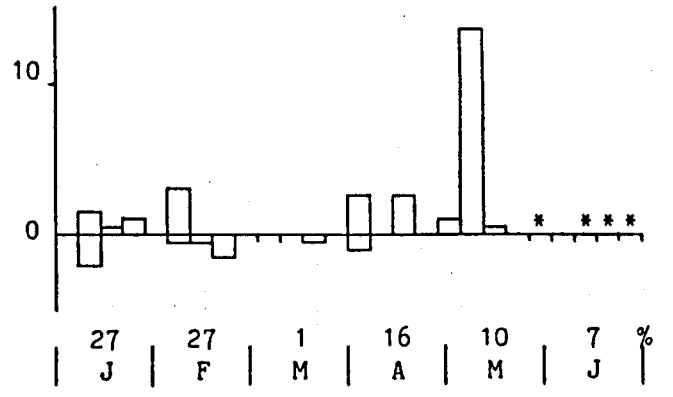


Eidereend - *Somateria mollissima*
 a. Zuid Holland & IJmuiden
 b. Noord Holland
 c. Waddengebied



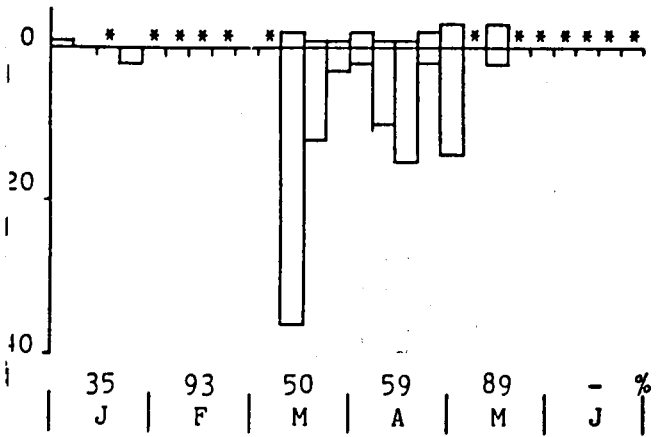
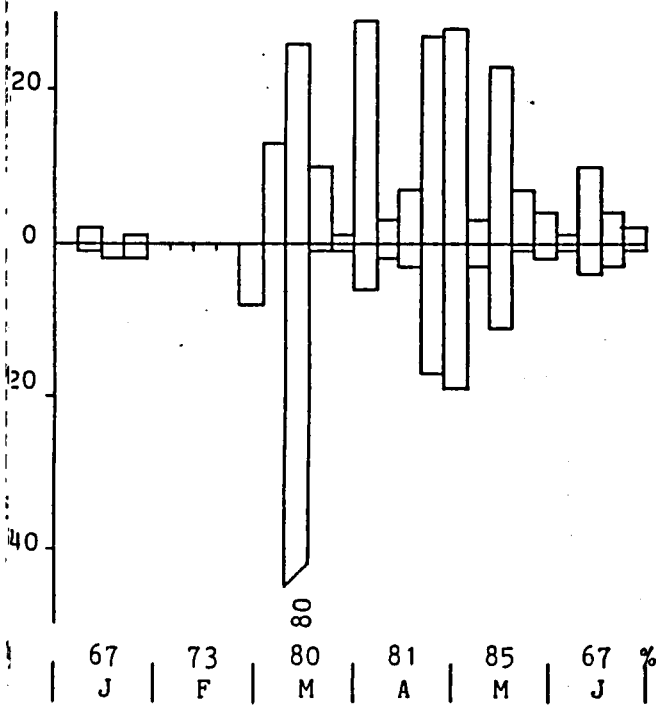
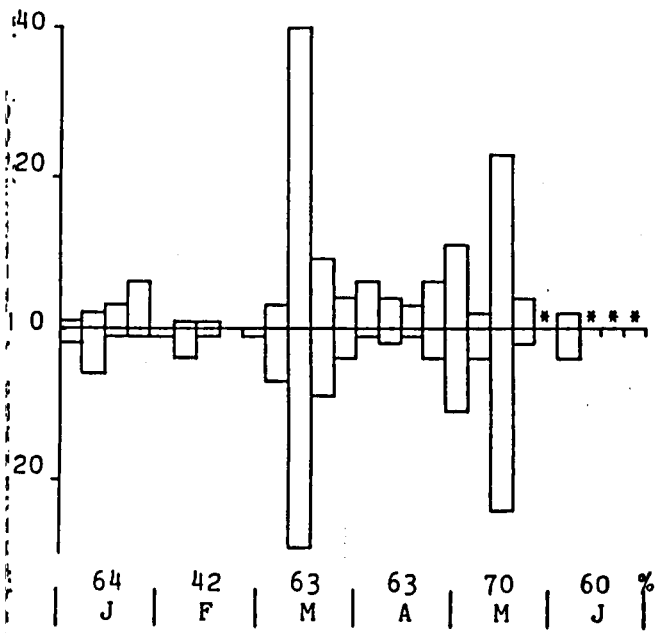
Zwarte Zeeëend - *Melanitta nigra*

- a. Zuid Holland & IJmuiden
- b. Noord Holland
- c. Waddengebied



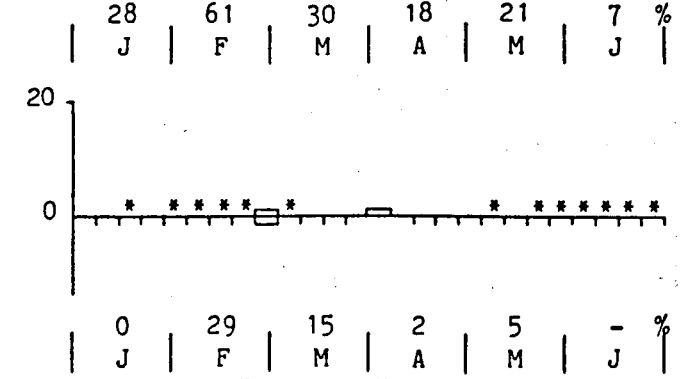
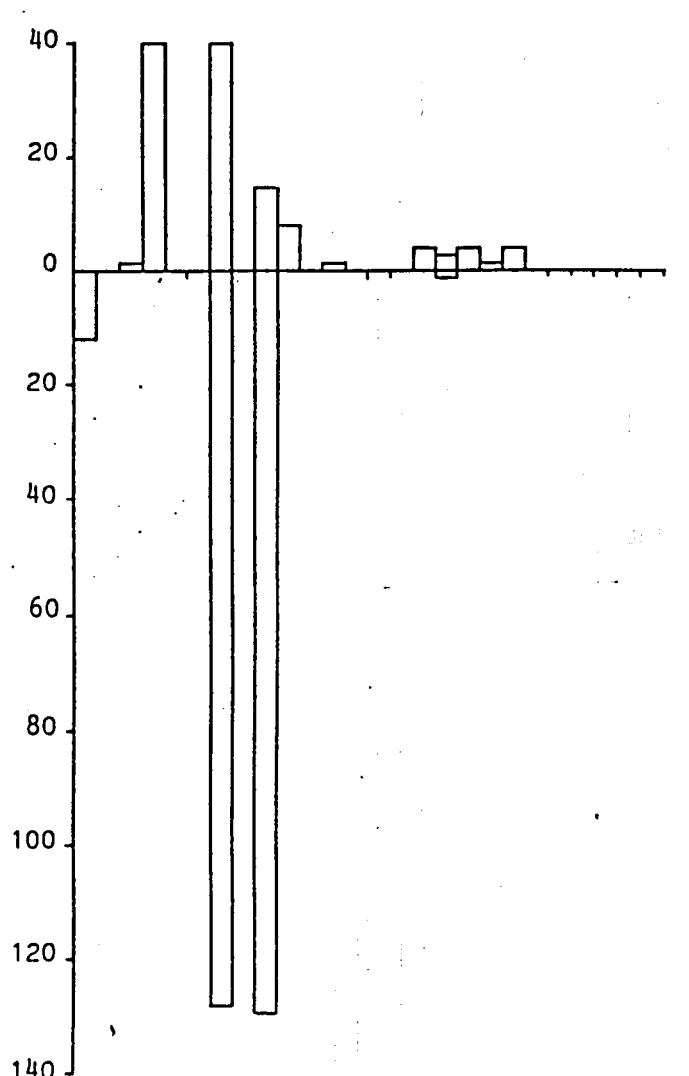
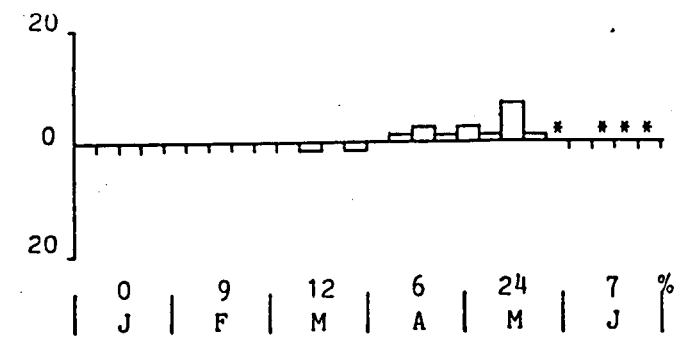
Grote Zeeëend - *Melanitta fusca*

- a. Zuid Holland & IJmuiden
- b. Noord Holland
- c. Waddengebied



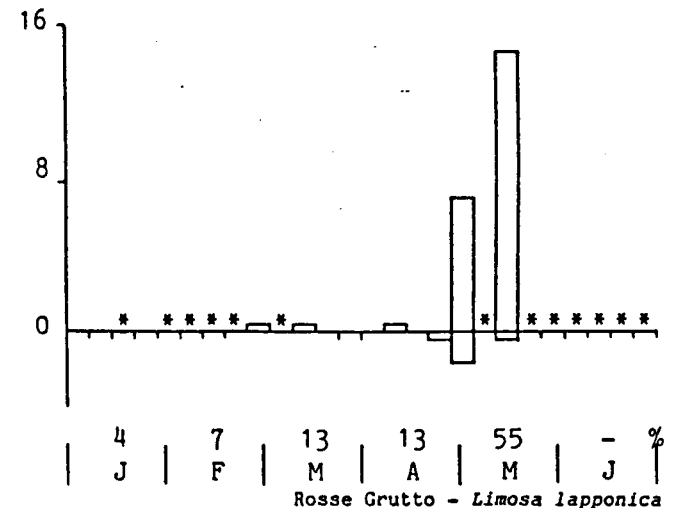
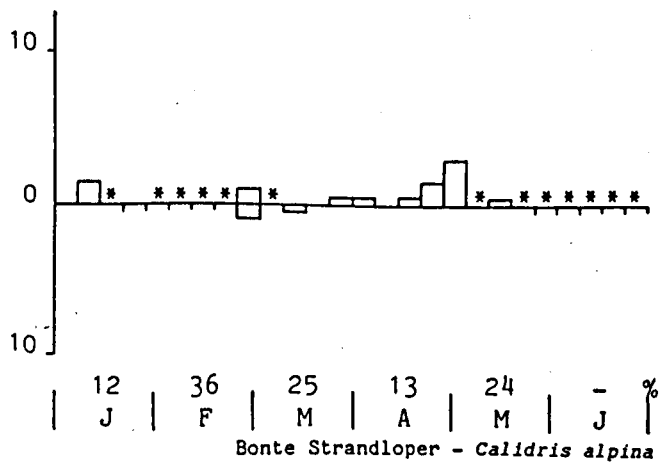
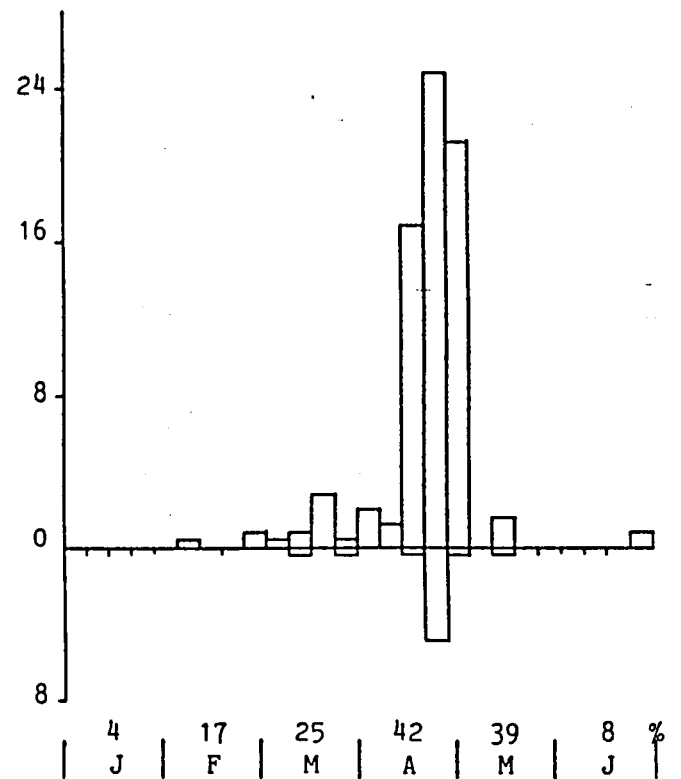
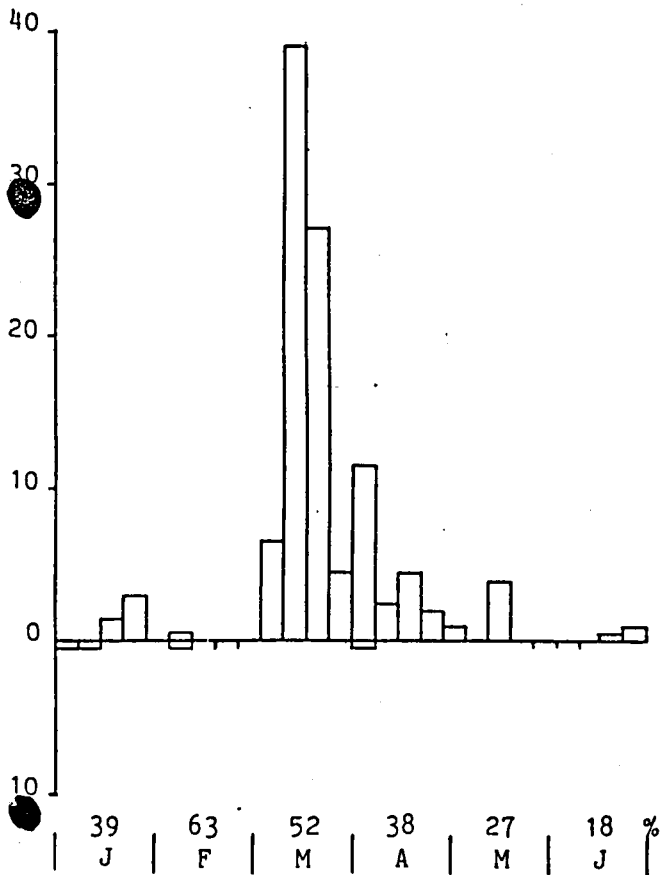
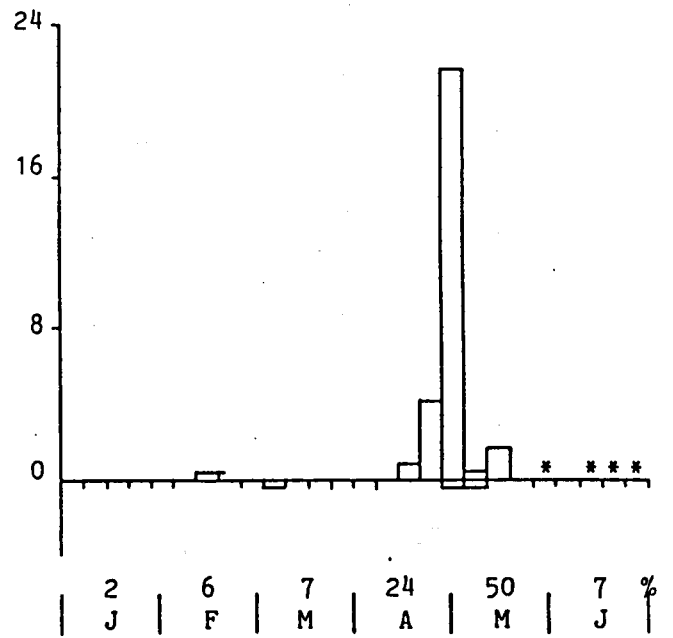
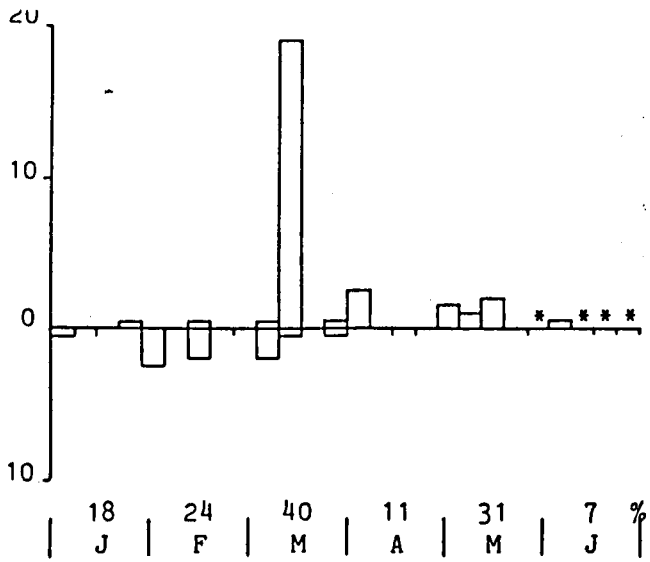
Scholekster - *Haematopus ostralegus*

- a. Zuid Holland & IJmuiden
- b. Noord Holland
- c. Waddengebied



Kanoetstrandloper - *Calidris canutus*

- a. Zuid Holland & IJmuiden
- b. Noord Holland
- c. Waddengebied

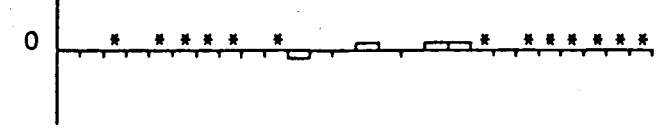
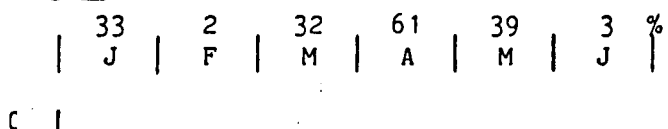
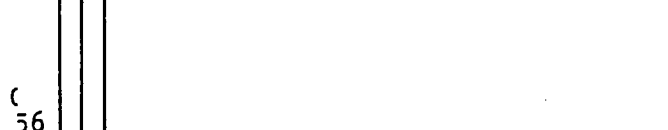
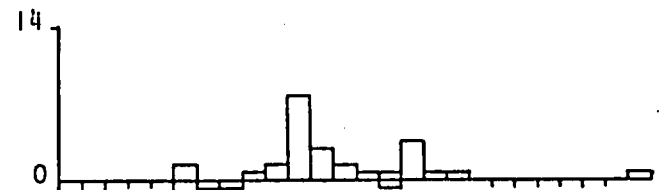
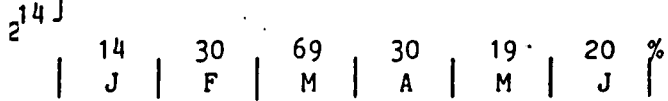
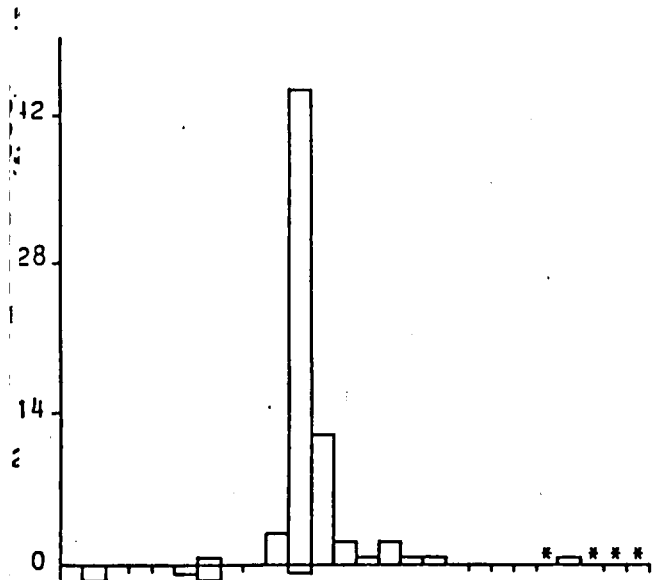


Bonte Strandloper - *Calidris alpina*

Rosse Grutto - *Limosa lapponica*

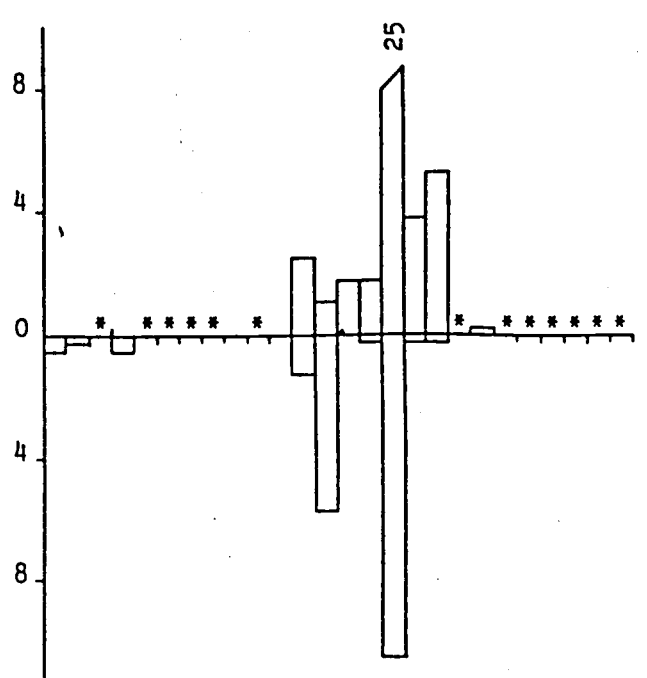
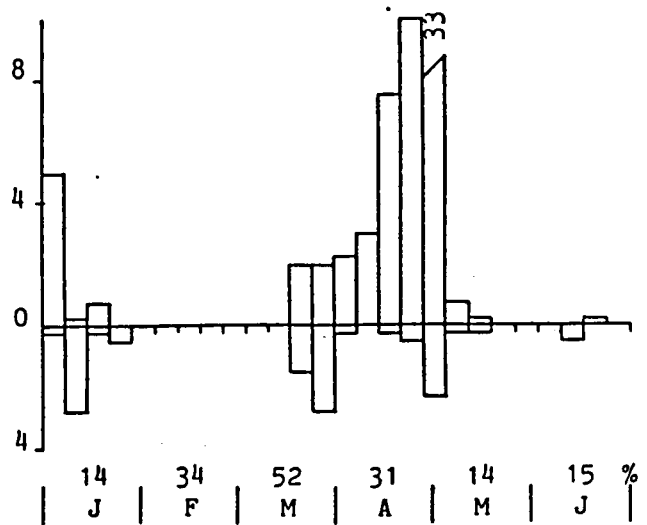
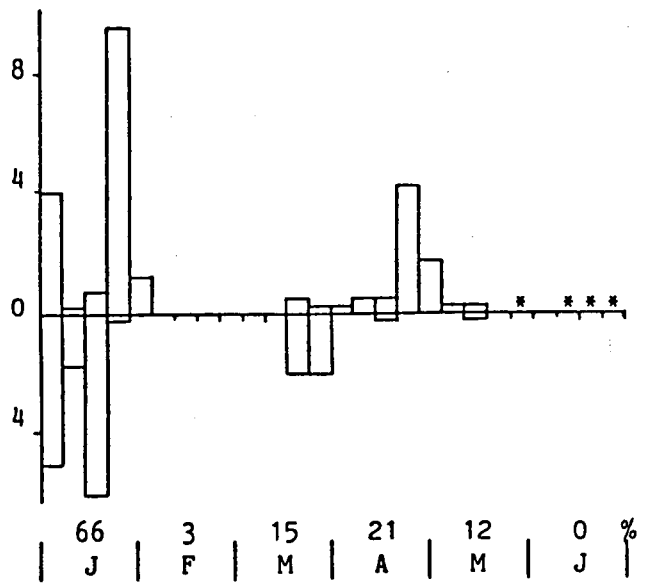
a. Zuid Holland & IJmuiden
 b. Noord Holland
 c. Waddengebied

a. Zuid Holland & IJmuiden
 b. Noord Holland
 c. Waddengebied



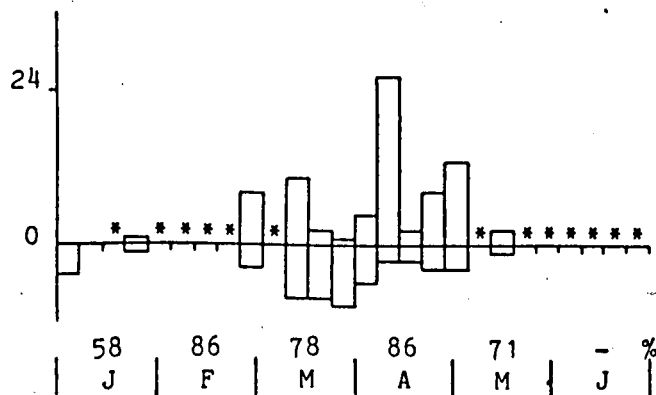
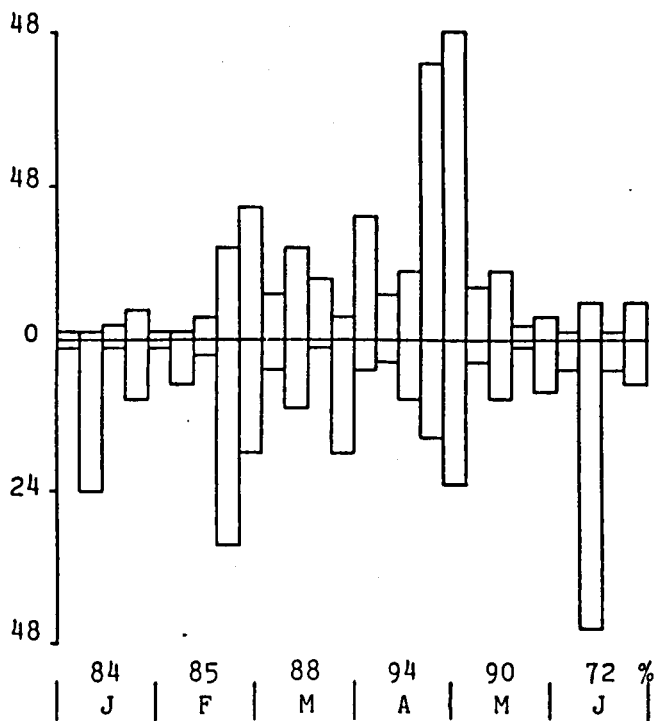
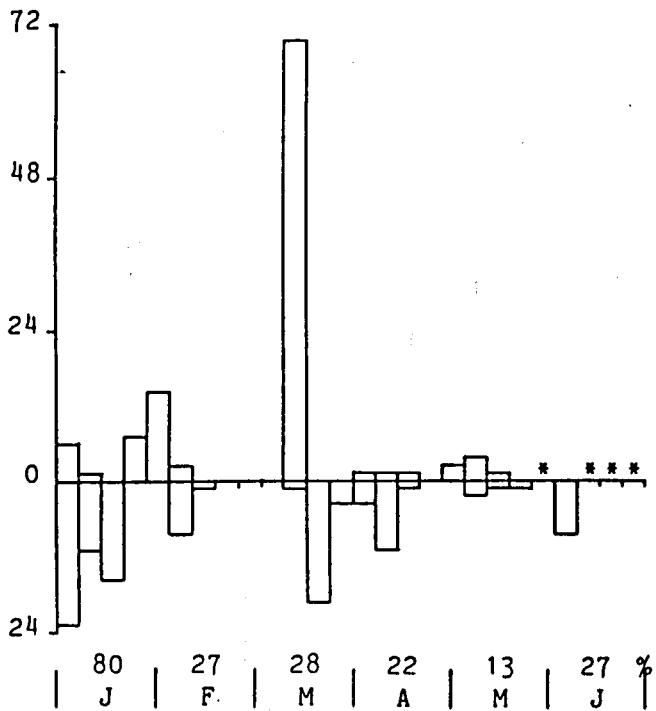
Wulp - *Numenius arquata*

- a. Zuid Holland & IJmuiden
- b. Noord Holland
- c. Waddengebied

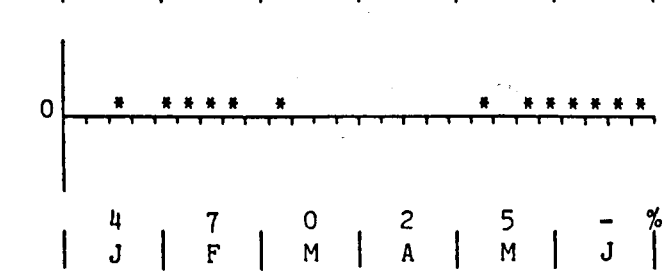
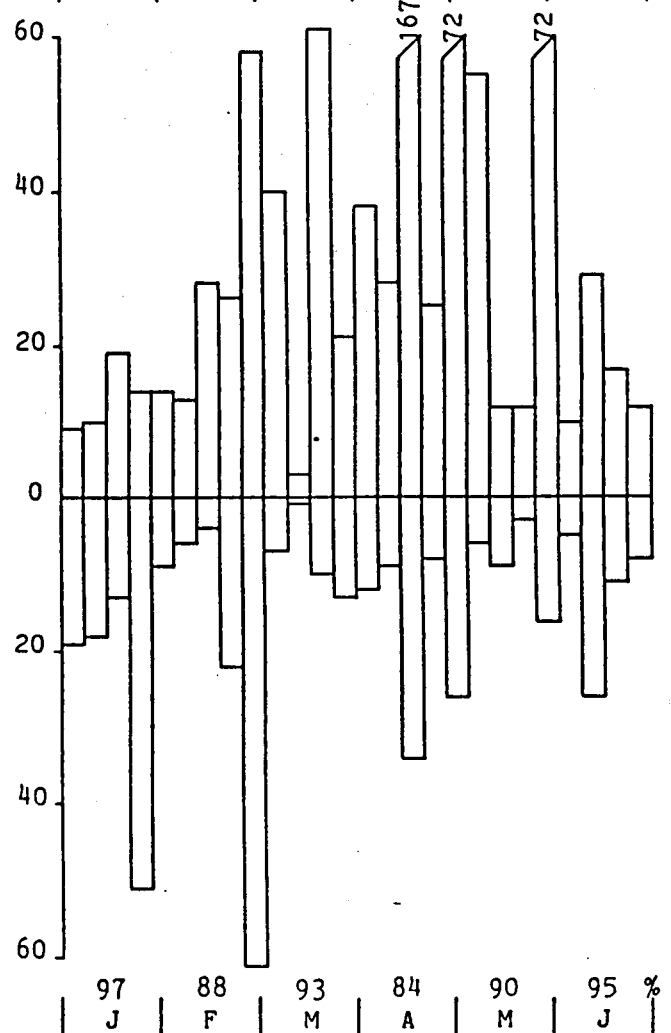
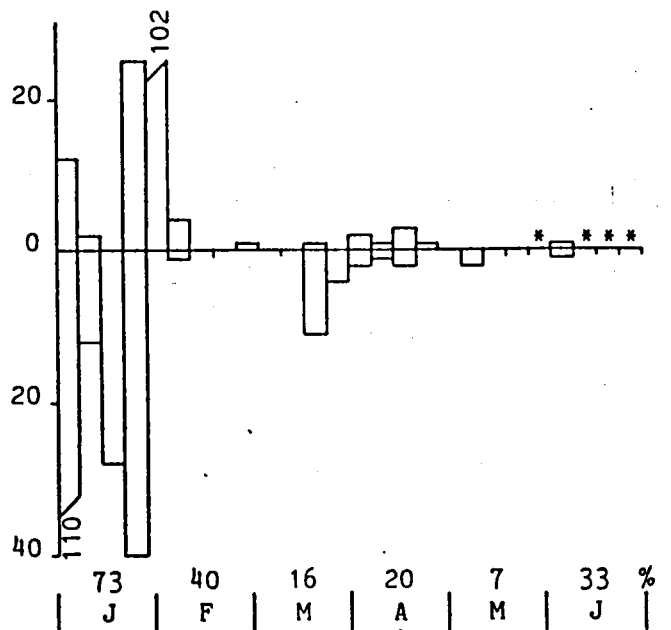


Dwergmeeuw - *Larus minutus*

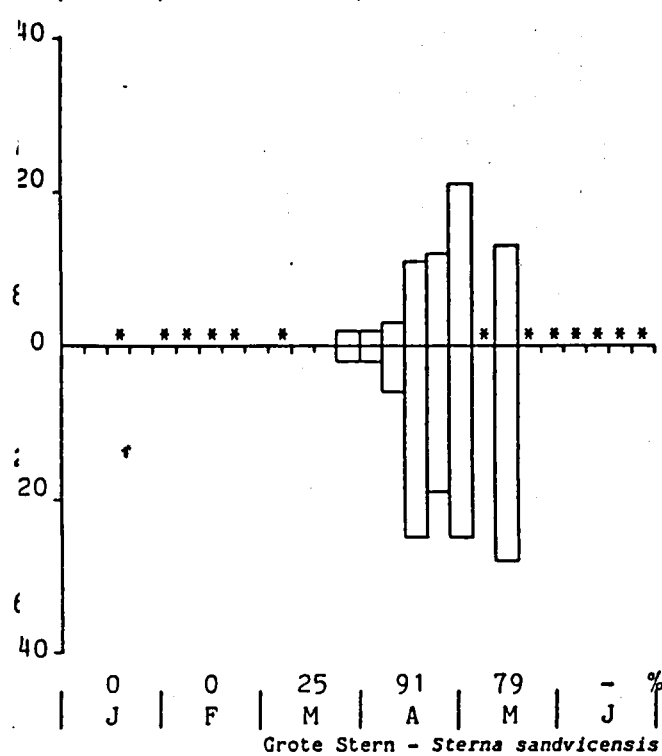
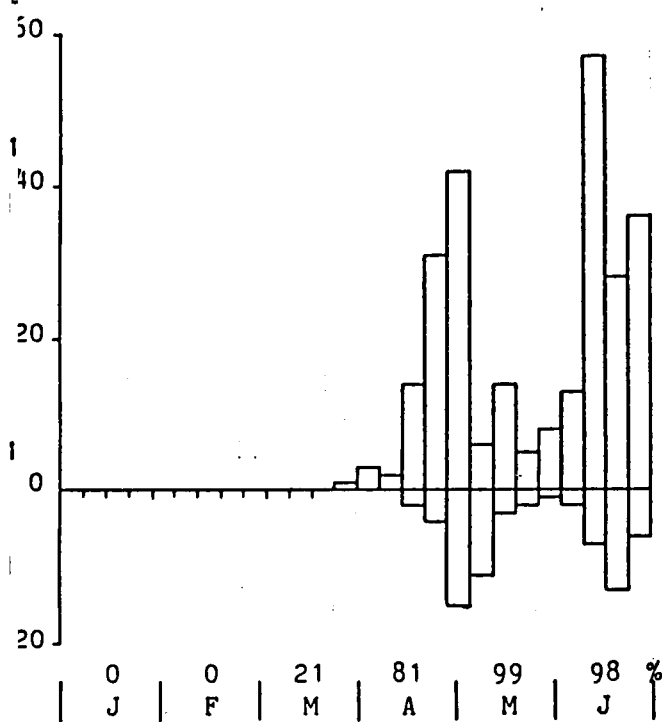
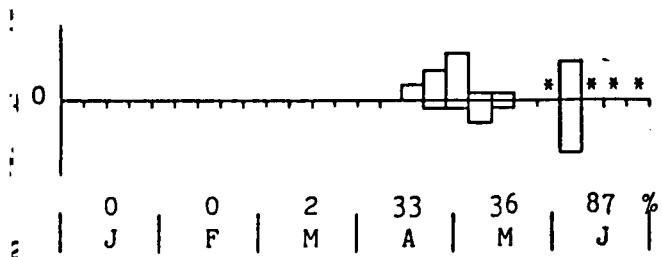
- a. Zuid Holland & IJmuiden
- b. Noord Holland
- c. Waddengebied



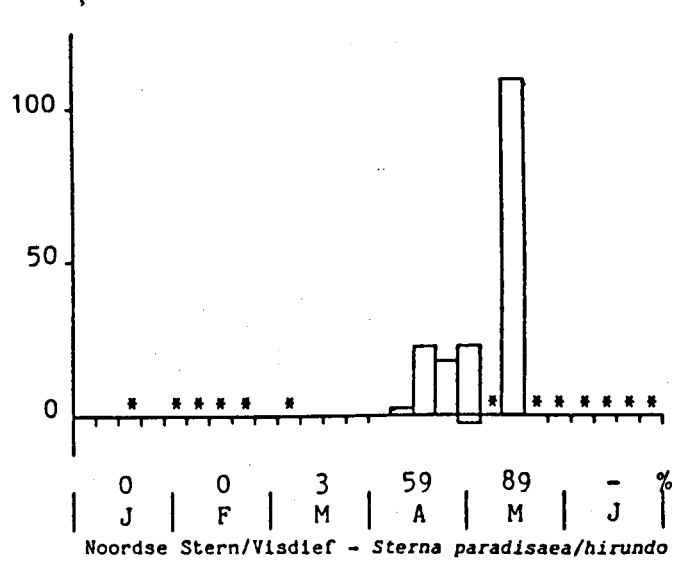
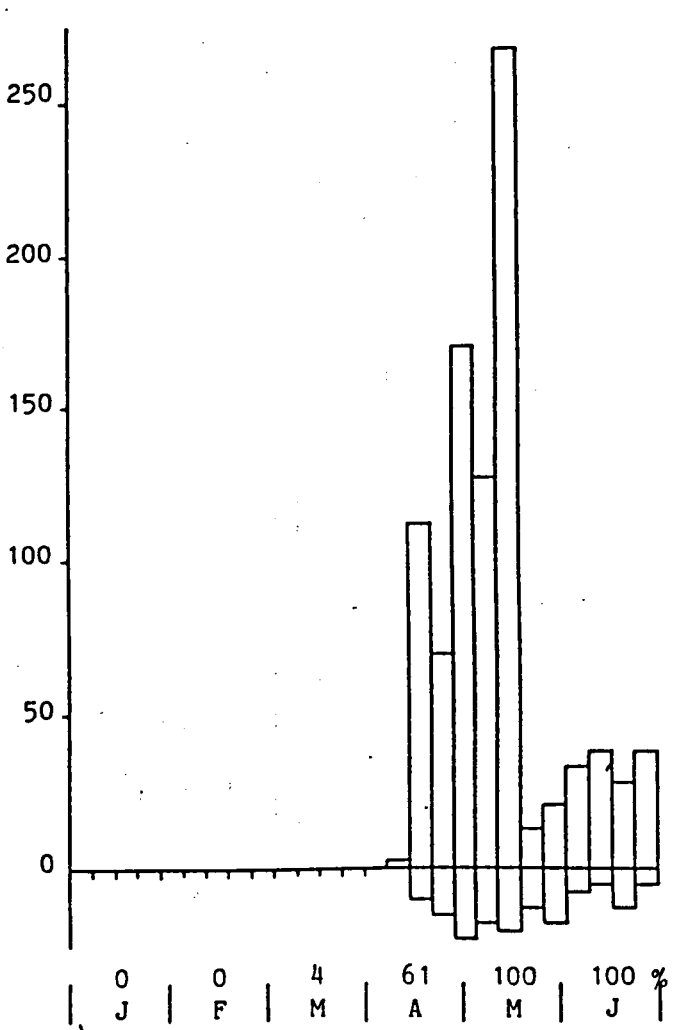
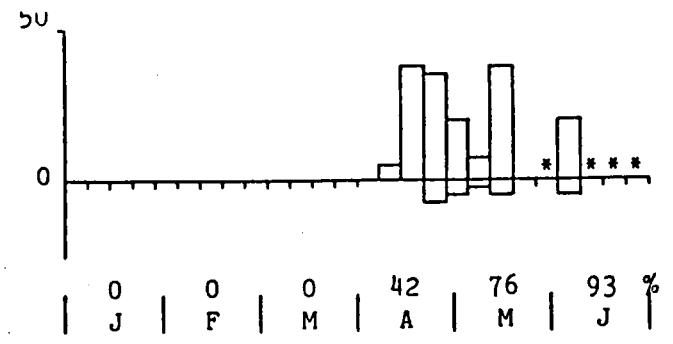
Kokmeeuw - *Larus ridibundus*
 a. Zuid Holland & IJmuiden
 b. Noord Holland
 c. Waddengebied



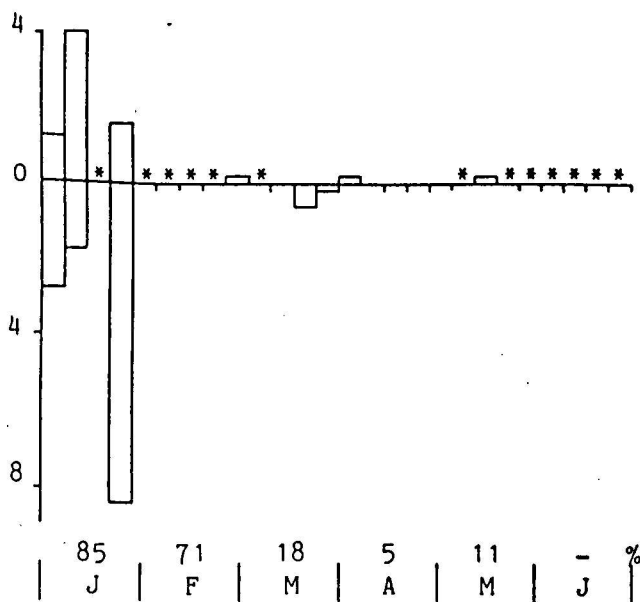
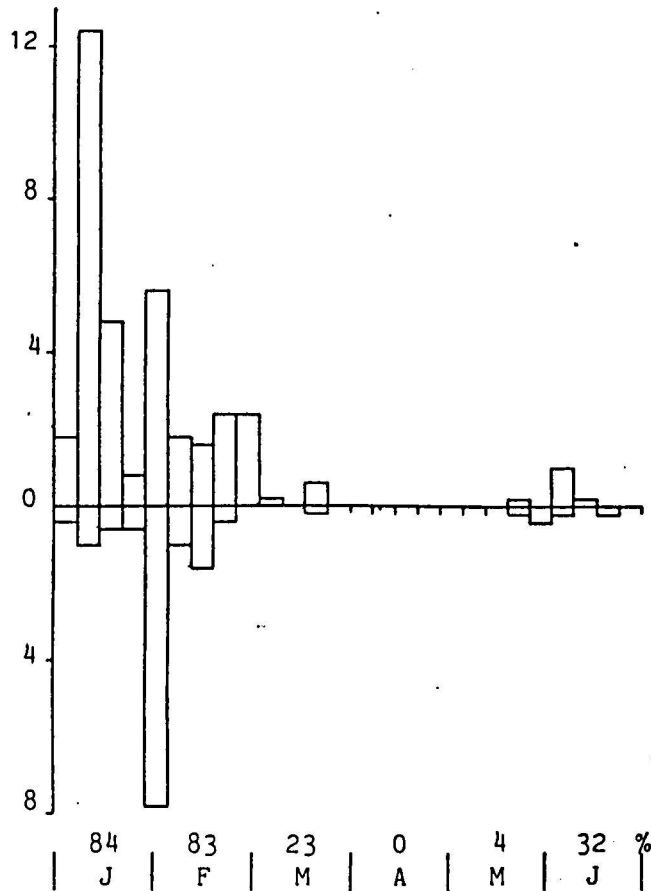
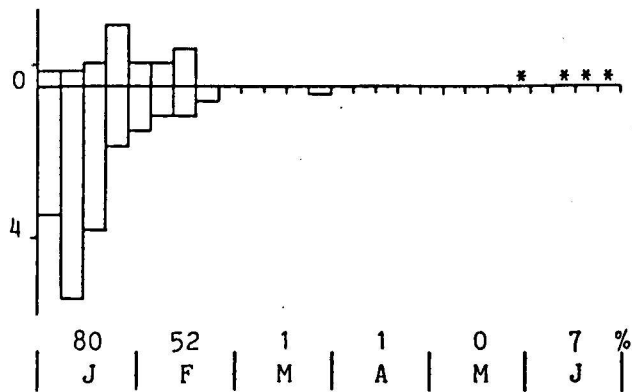
Stormmeeuw - *Larus canus*
 a. Zuid Holland & IJmuiden
 b. Noord Holland
 c. Waddengebied



Grote Stern - *Sterna sandvicensis*
 a. Zuid Holland & IJmuiden
 b. Noord Holland
 c. Waddengebied



Noordse Stern/Visdief - *Sterna paradisaea/hirundo*
 a. Zuid Holland & IJmuiden
 b. Noord Holland
 c. Waddengebied



Alk/Zeekoet -

- a. Zuid Holland & IJmuiden
- b. Noord Holland
- c. Waddengebied