

7. De uurgemiddelde-grafieken.

In de volgende grafieken is het uurgemiddelde per 7-daagse periode per deelgebied uitgezet. Hierbij is het uurgemiddelde van de N(O)-waarts vliegende vogels boven de abscis uitgezet, dat van de Z(W)-waarts vliegende vogels onder de abscis. Van alle soorten zijn de uurgemiddelden van ZH en NH als boven en onder weergegeven. Perioden, waarin 5 uur of minder geteld is, zijn aangegeven met \*.

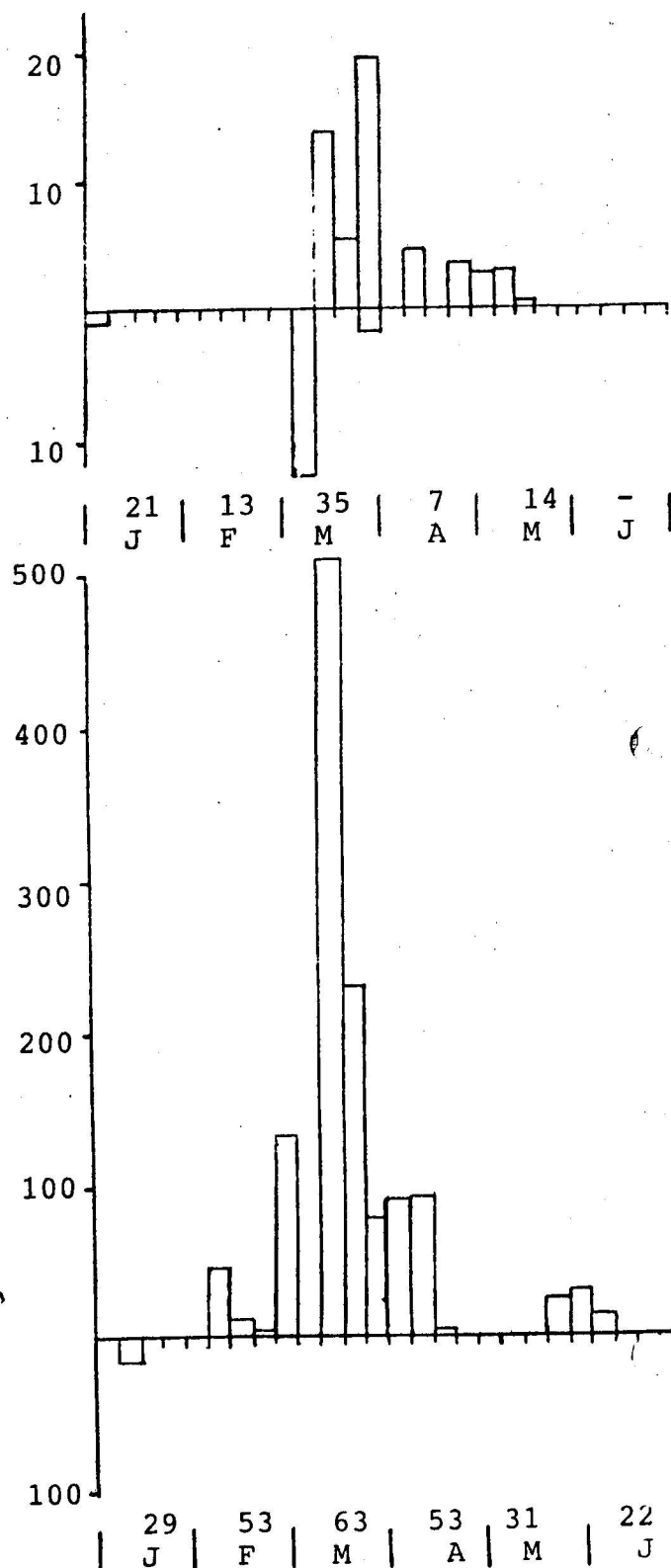
Onder alle figuren is per deelgebied het presentie-percentage per maand vermeld. Hierbij is het aantal uren, waarin de soort werd waargenomen, uitgedrukt als percentage van het totaal aantal waarnemingsuren in die maand.

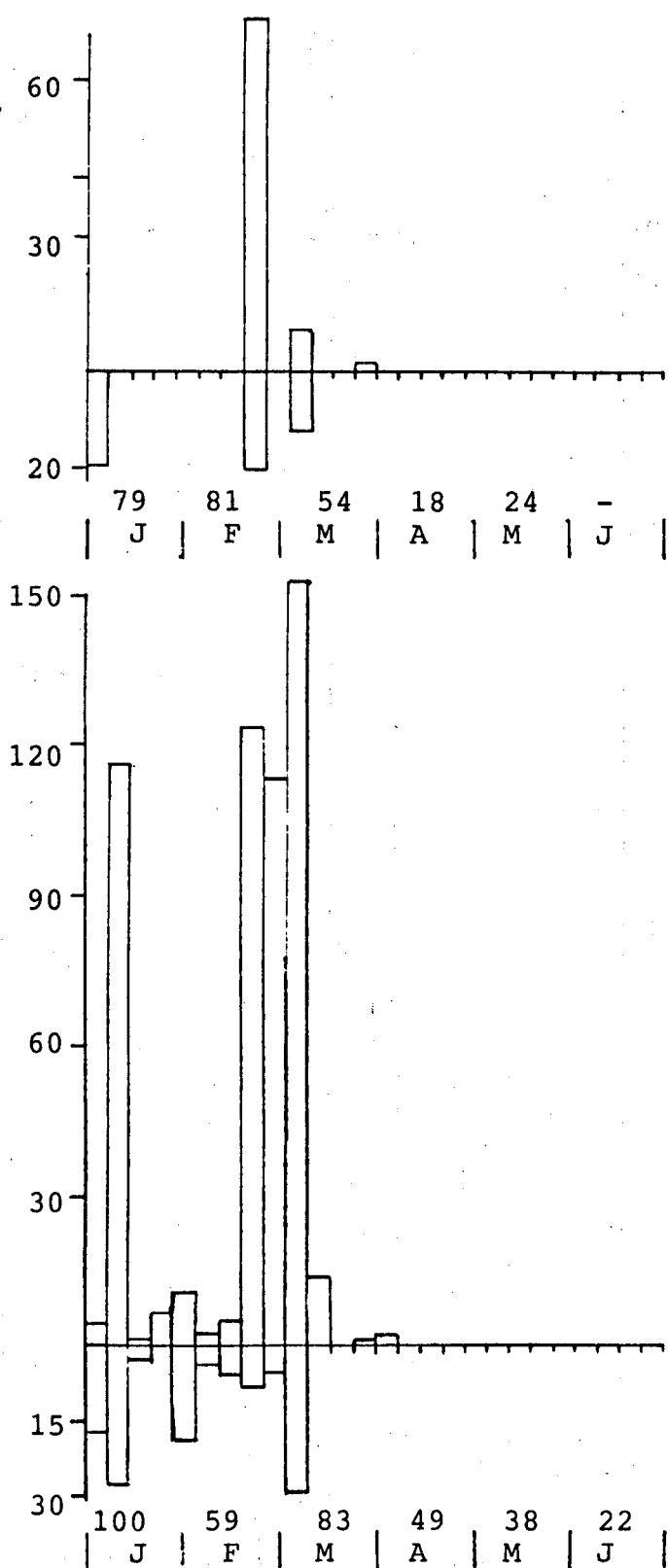
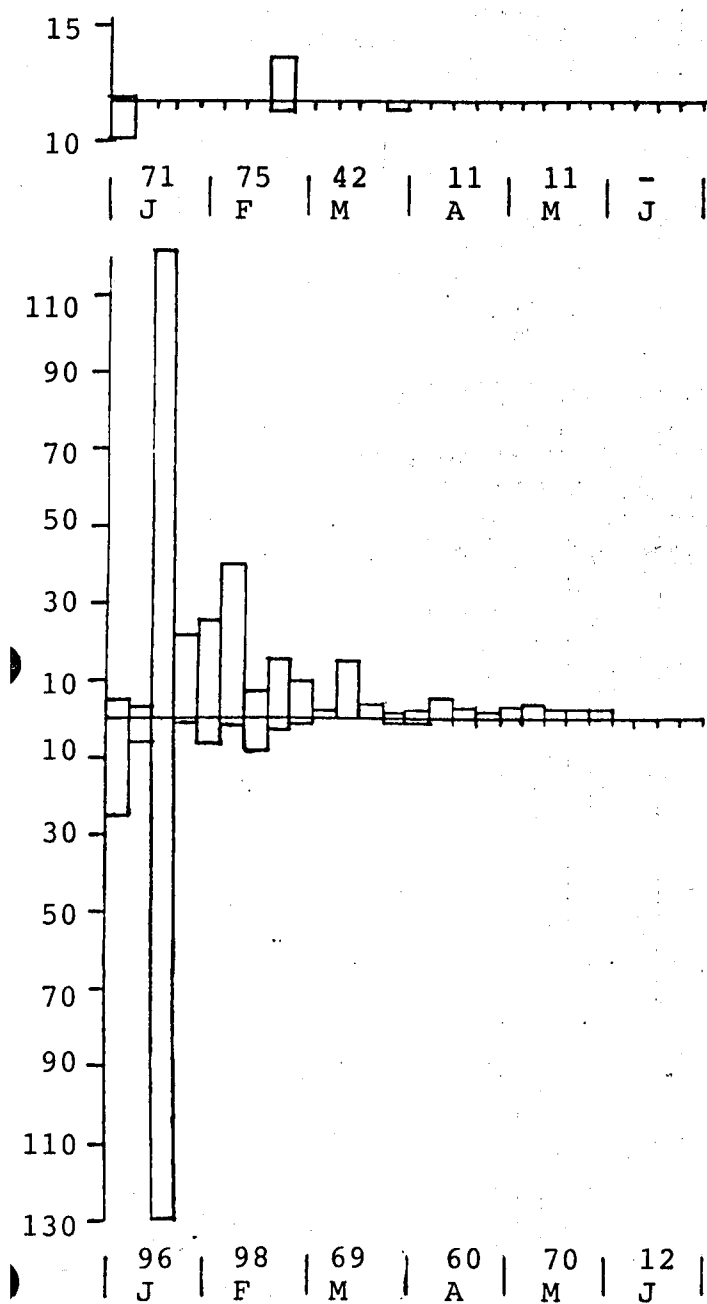
In the figures the mean numbers of birds per hour per 7-day-period for the coastal regions ZH and NH are given. In these the mean numbers of birds flying N(E)-wards are plotted above the abscis, while the mean numbers of birds flying S(W)-wards are plotted below the abscis. The upper figures for each species are from ZH, the lower ones from NH. 7-day-periods, in which less than 6 observation-hours were available, are marked with \*.

Below each region-figure the percentages of presence are given for each month. These were obtained by dividing the number of hours, in which a certain species was seen, by the total number of observation-hours in that particular month in that particular region. Thus this value gives an indication of the chances of encountering that particular species in that particular month in that particular region.

NB.: In de perioden 2,3,4,5,6,7,9, 22,23,24,25 & 26 is 5 uur of minder geteld in ZH, zodat hiervoor geen waarden zijn opgenomen in de grafieken.

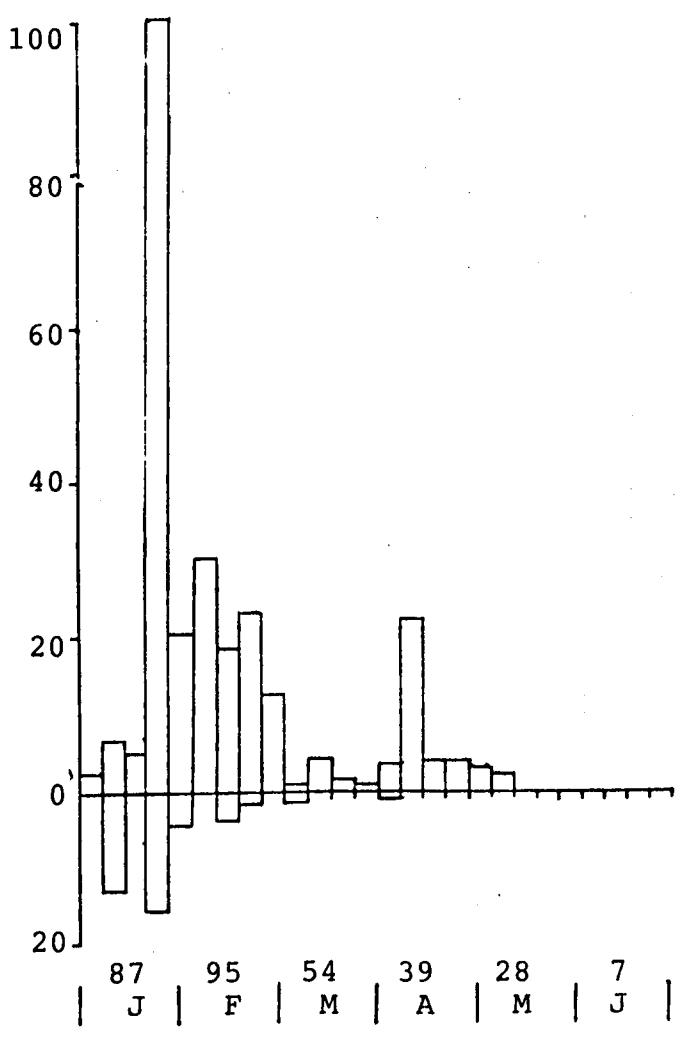
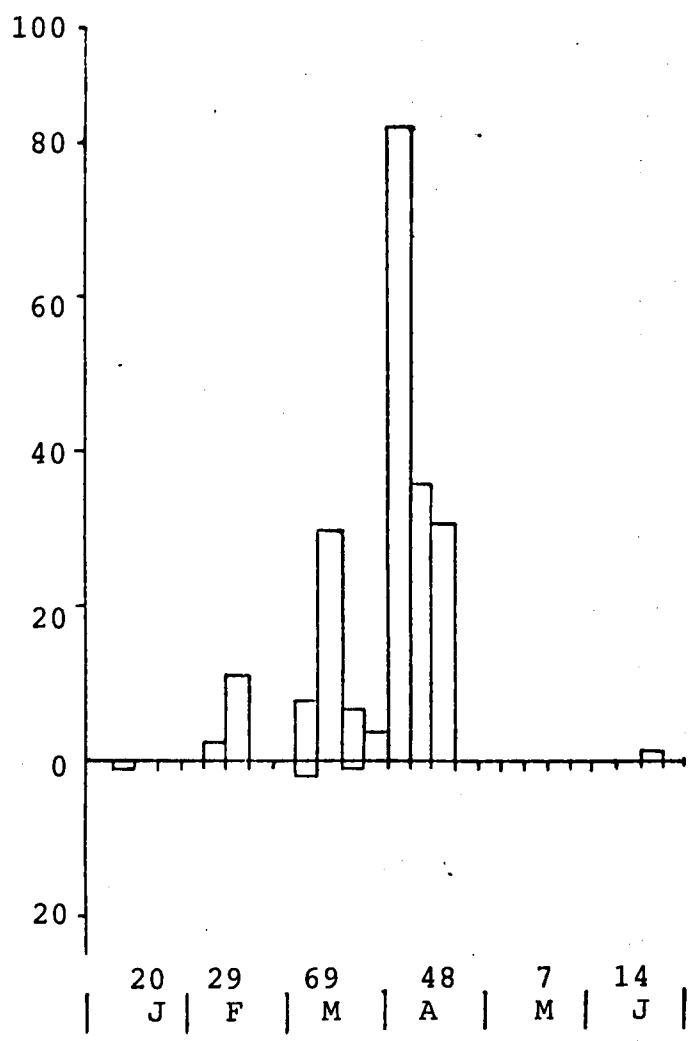
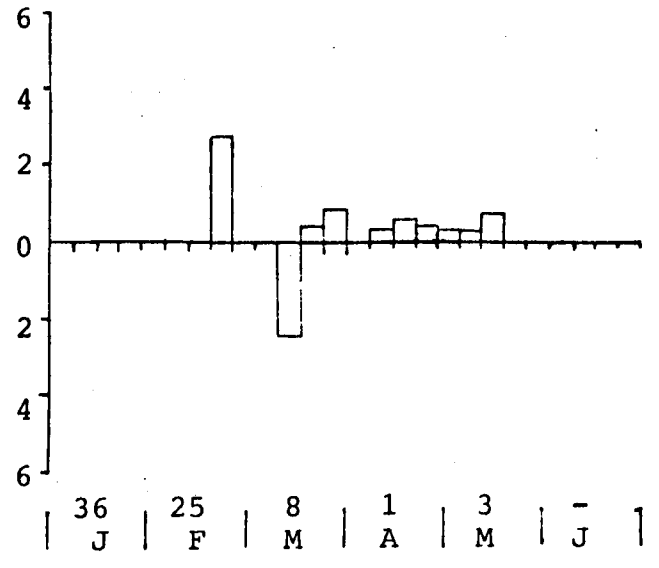
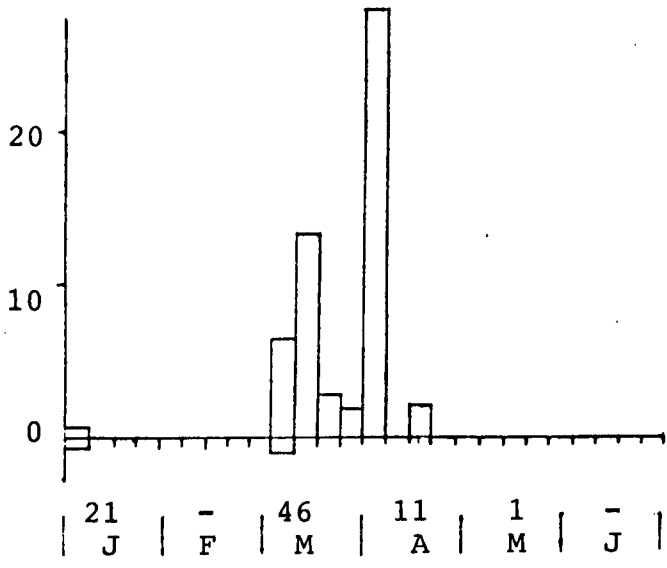
In the periods 2,3,4,5,6,7,9,22,23, 24,25 & 26 less than 6 observation-hours were available from ZH, so no data are shown in the figures for these periods.





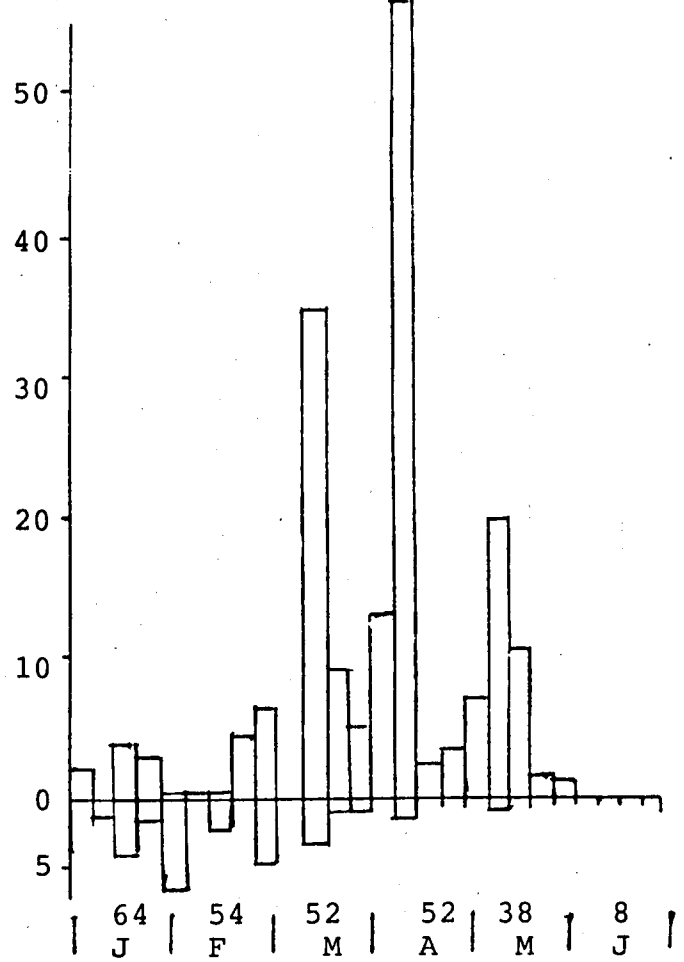
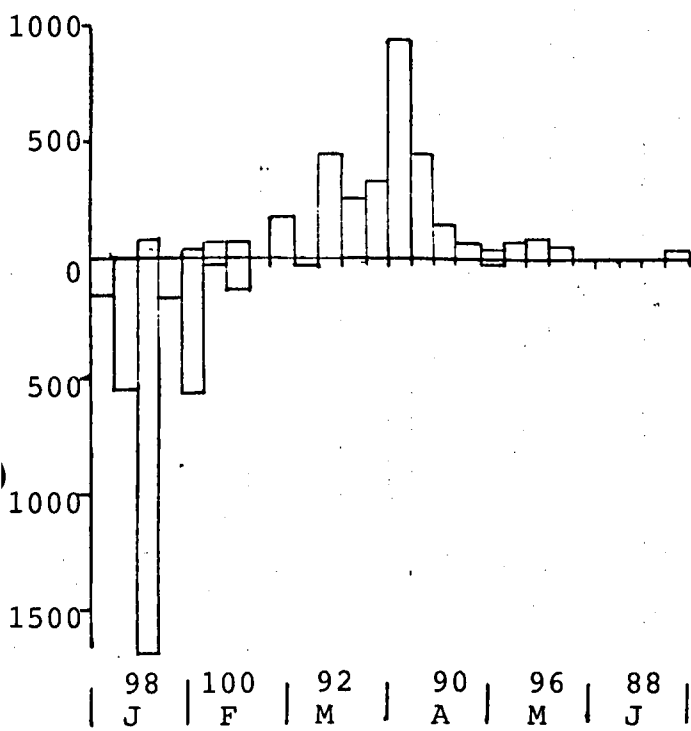
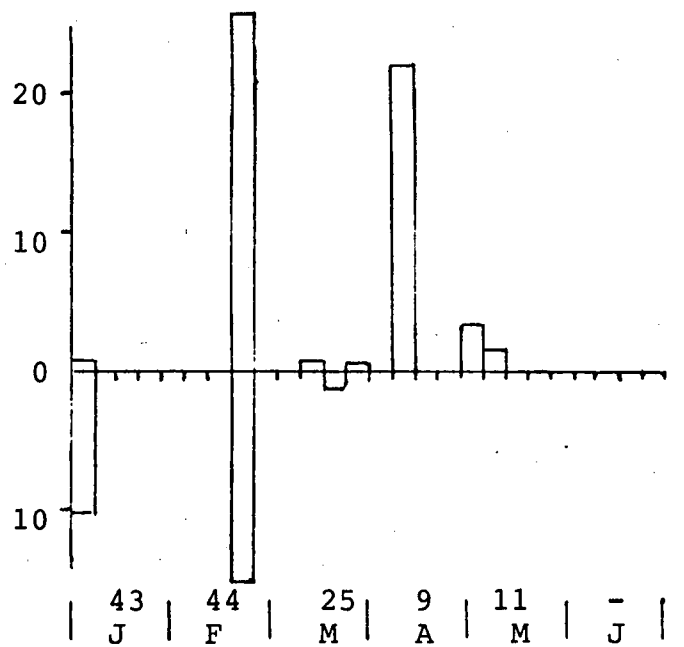
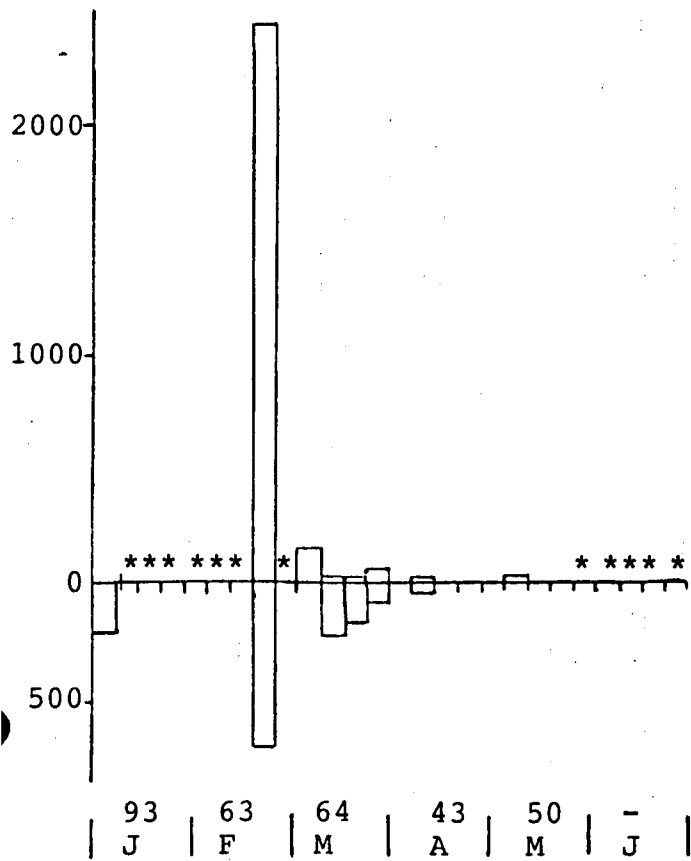
Roodkeel-/Parelduiker -  
*Gavia stellata/ arctica*  
 a- Zuid Holland & Zeeland  
 b- Noord Holland

Fuut - *Podiceps cristatus*  
 a- Zuid Holland & Zeeland  
 b- Noord Holland



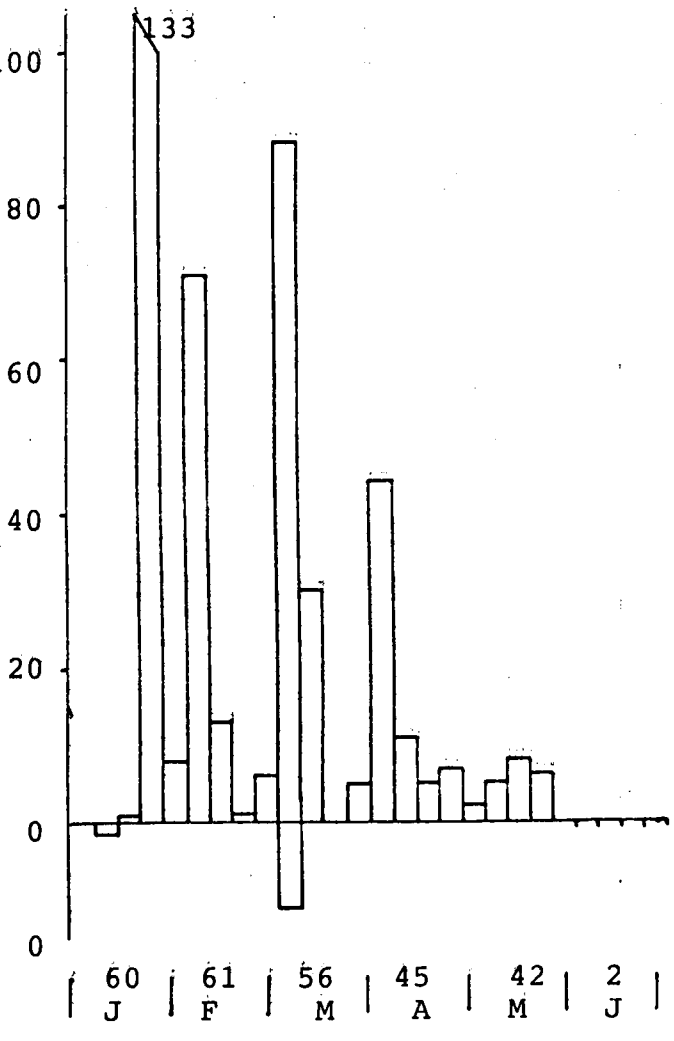
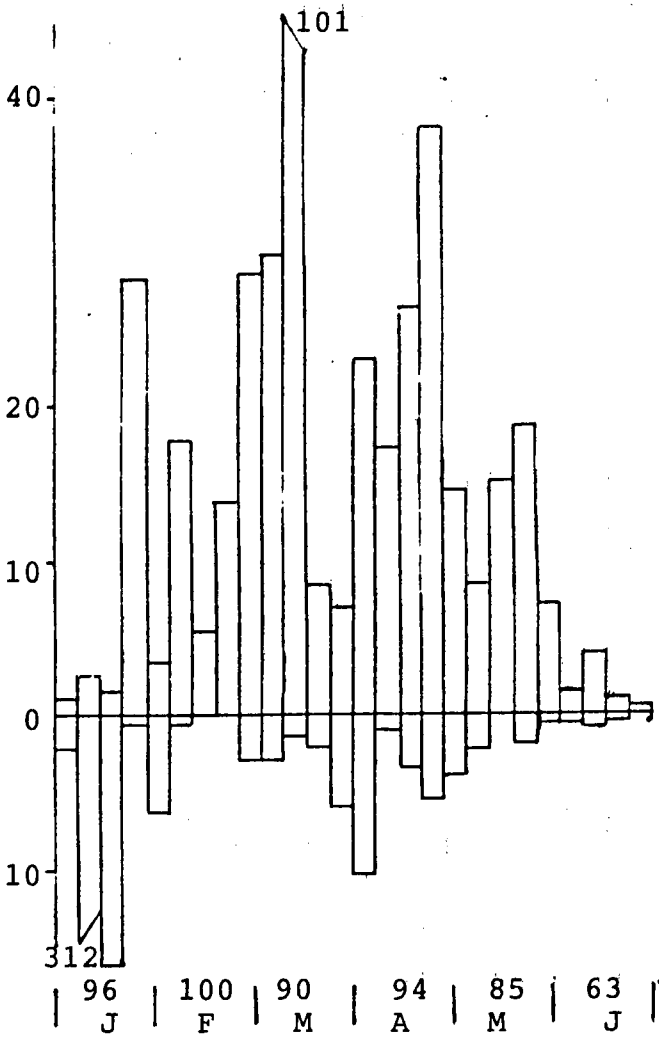
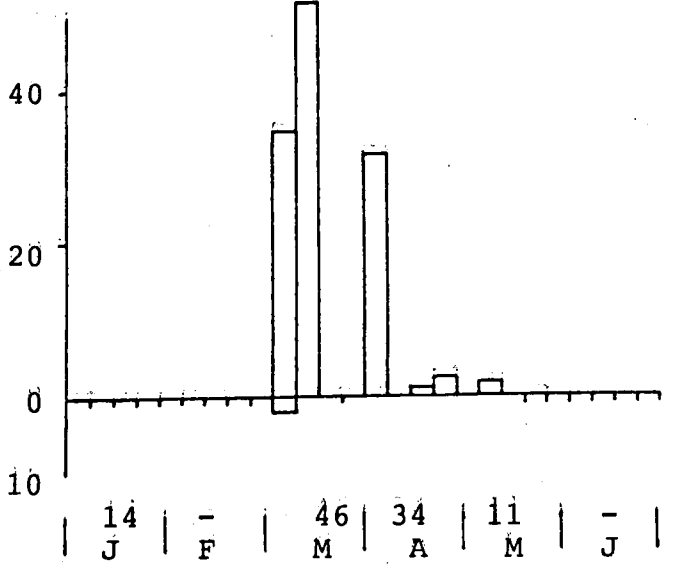
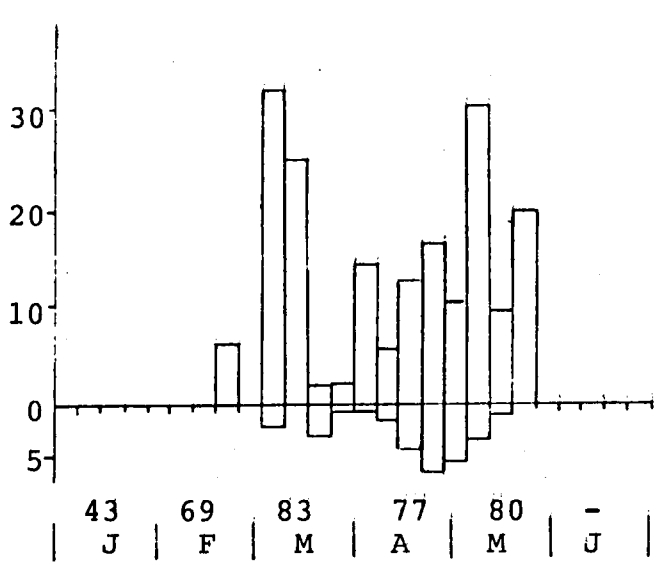
Wintertaling - *Anas crecca*  
 a- Zuid Holland & Zeeland  
 b- Noord Holland

Eidereend - *Somateria mollissima*  
 a- Zuid Holland & Zeeland  
 b- Noord Holland



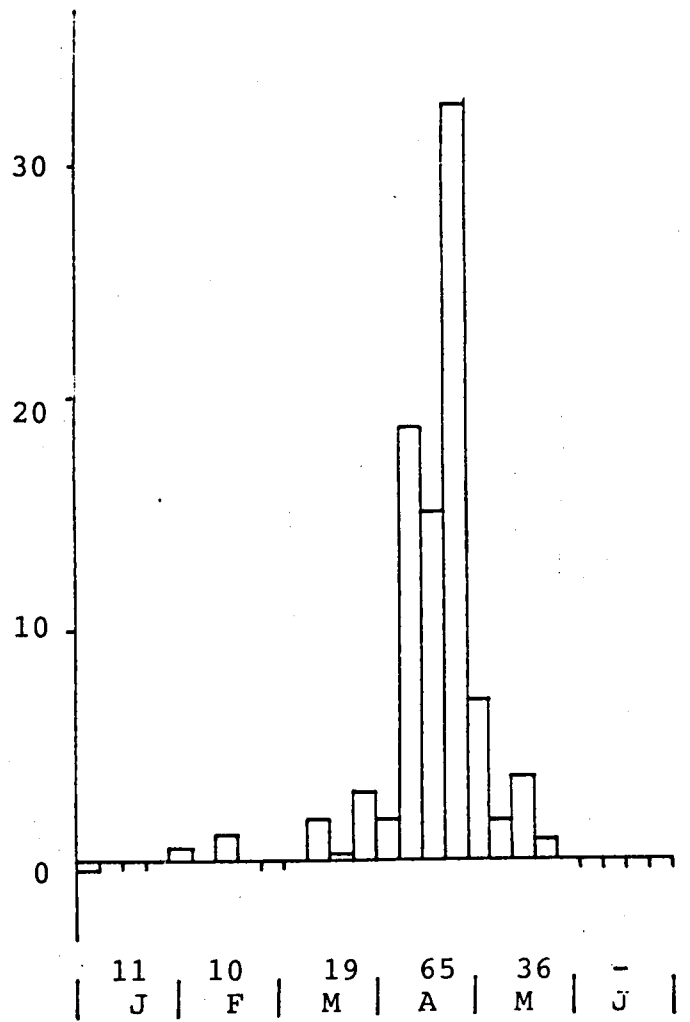
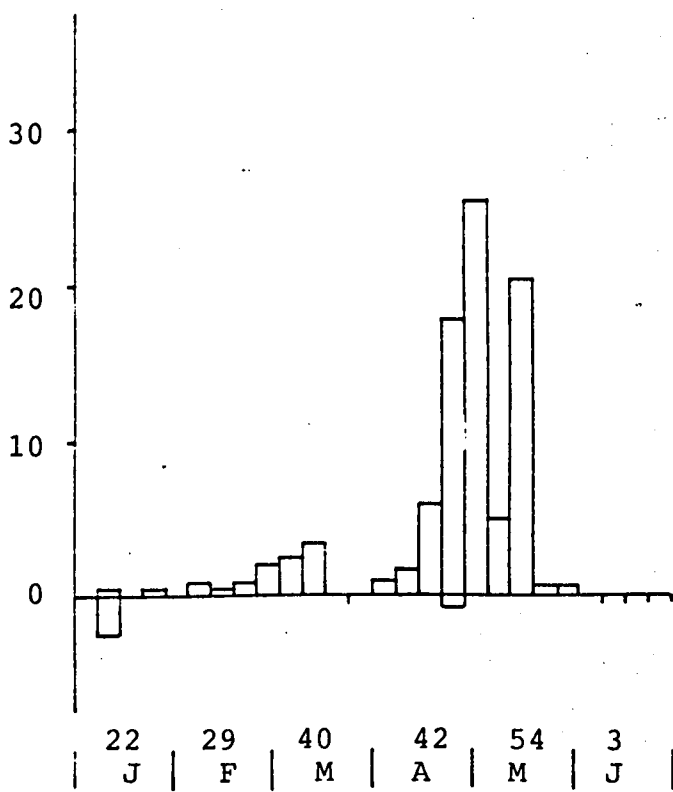
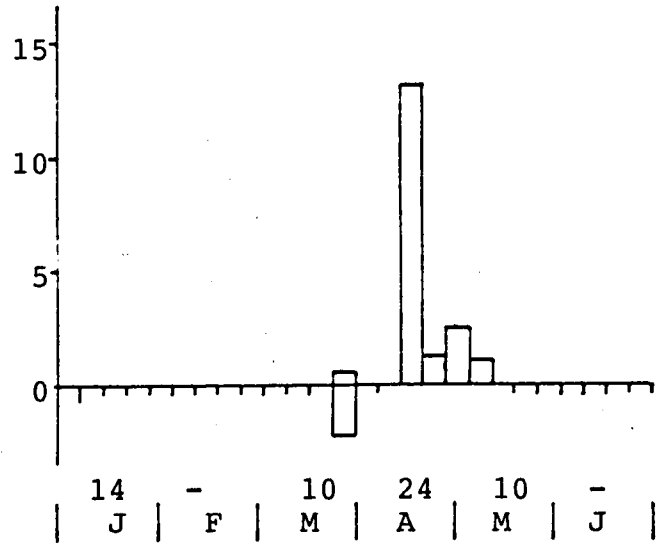
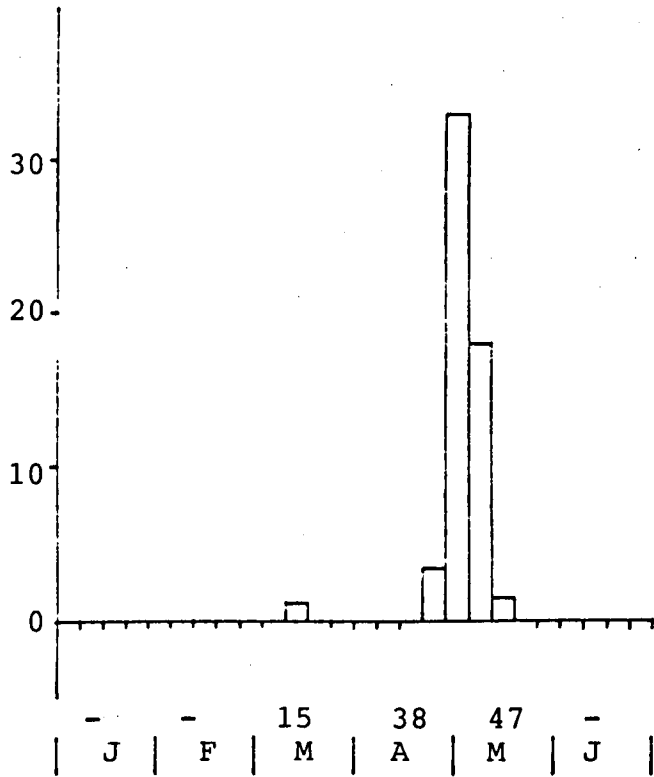
Zwarte Zeeëend - *Melanitta nigra*  
a- Zuid Holland & Zeeland  
b- Noord Holland

Grote Zeeëend - *Melanitta fusca*  
a- Zuid Holland & Zeeland  
b- Noord Holland



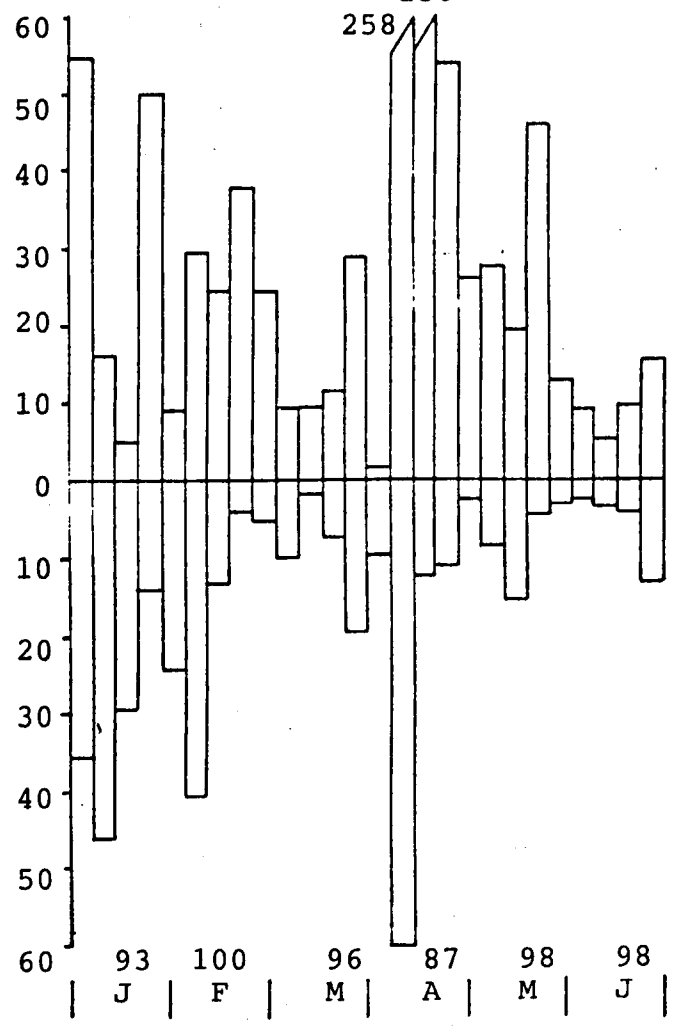
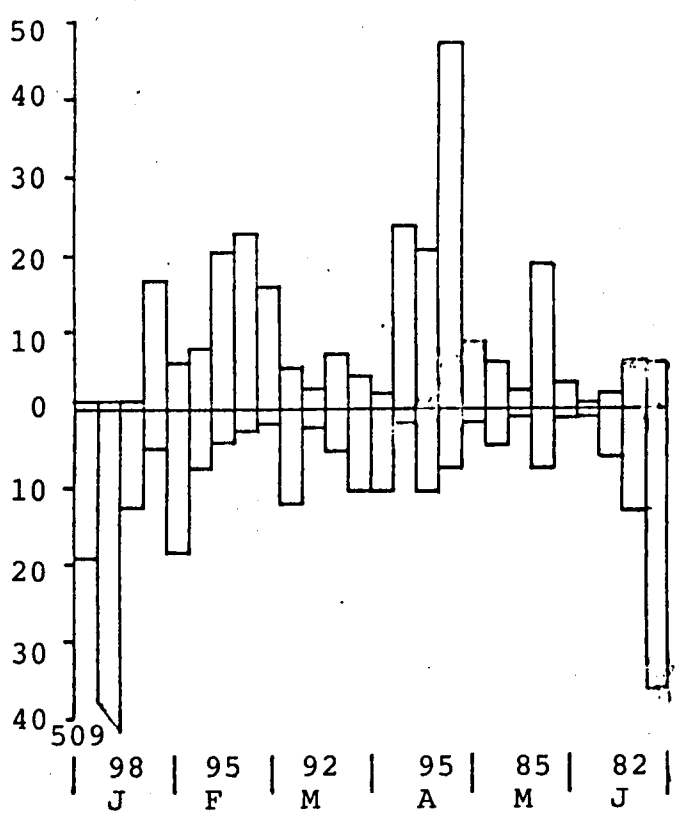
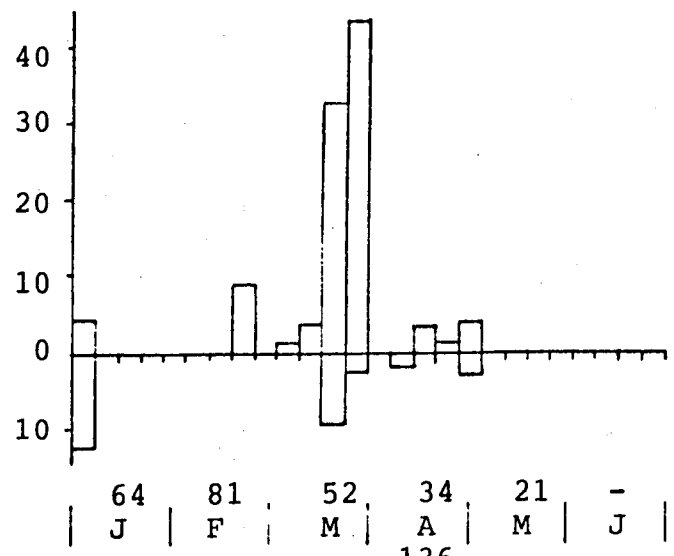
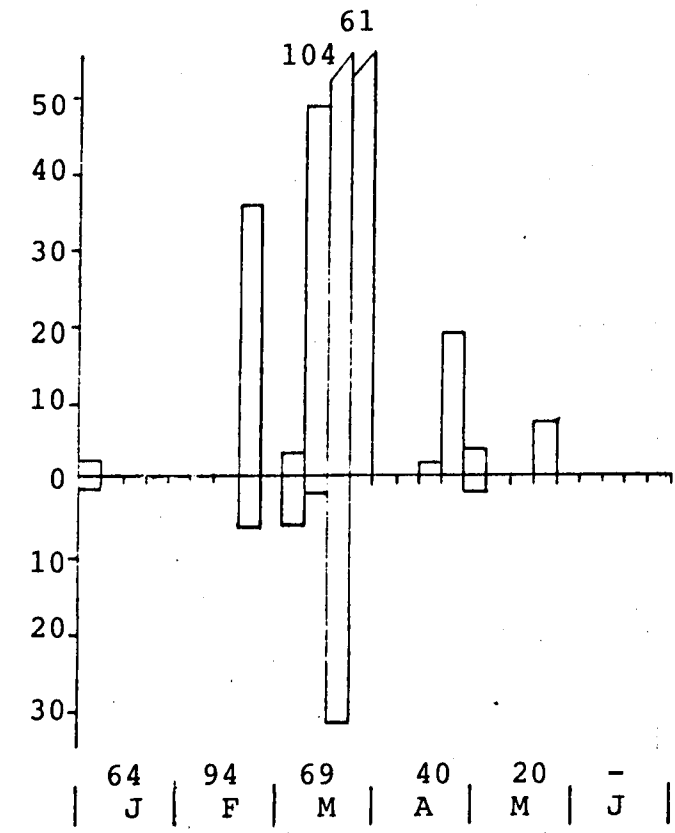
Scholekster - *Haematopus ostralegus*  
 a- Zuid Holland & Zeeland  
 b- Noord Holland

Bonte Strandloper - *Calidris alpina*  
 a- Zuid Holland & Zeeland  
 b- Noord Holland



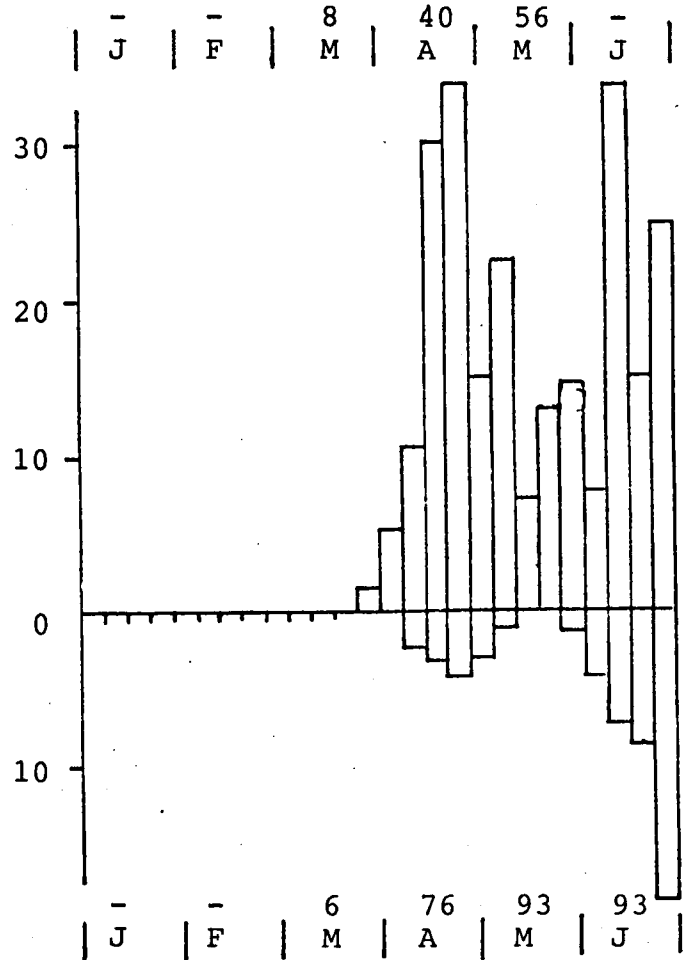
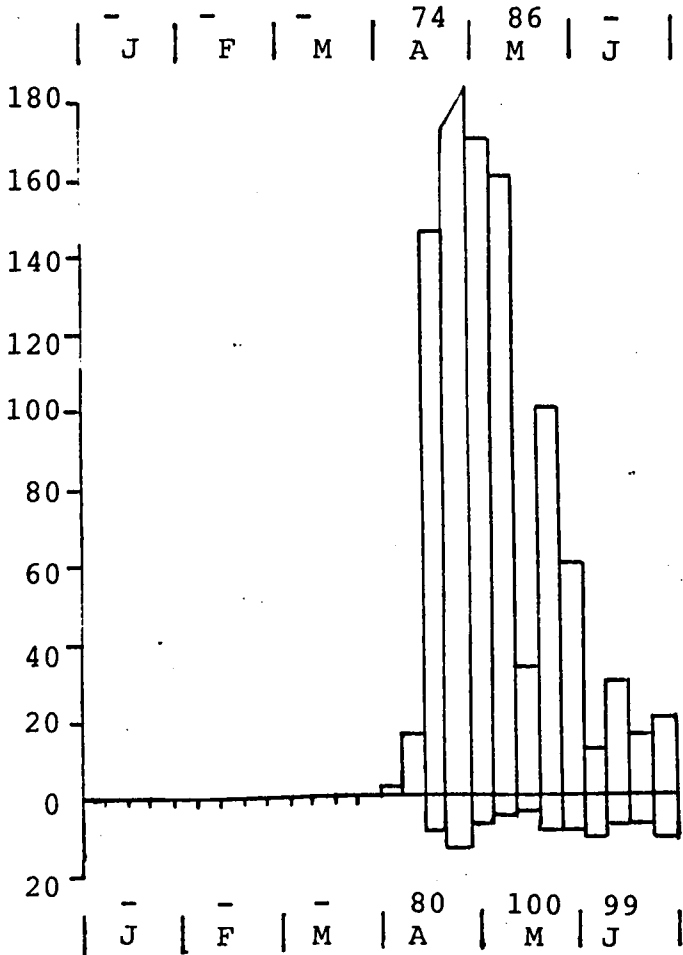
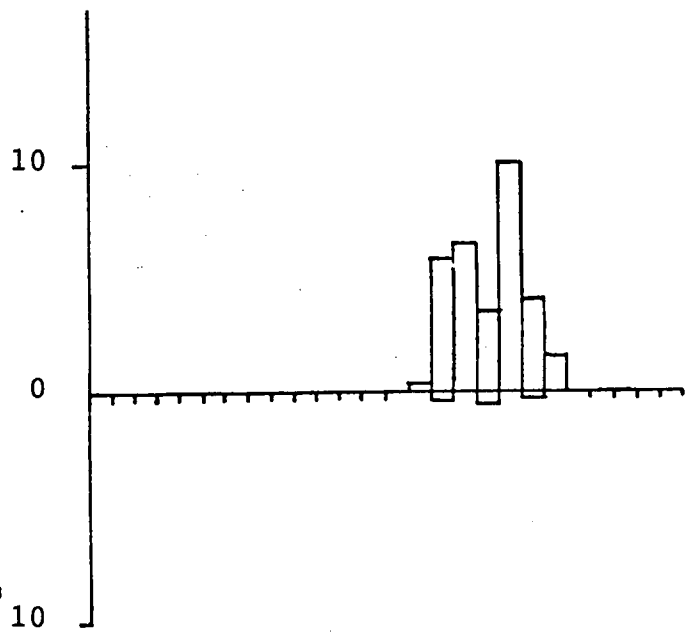
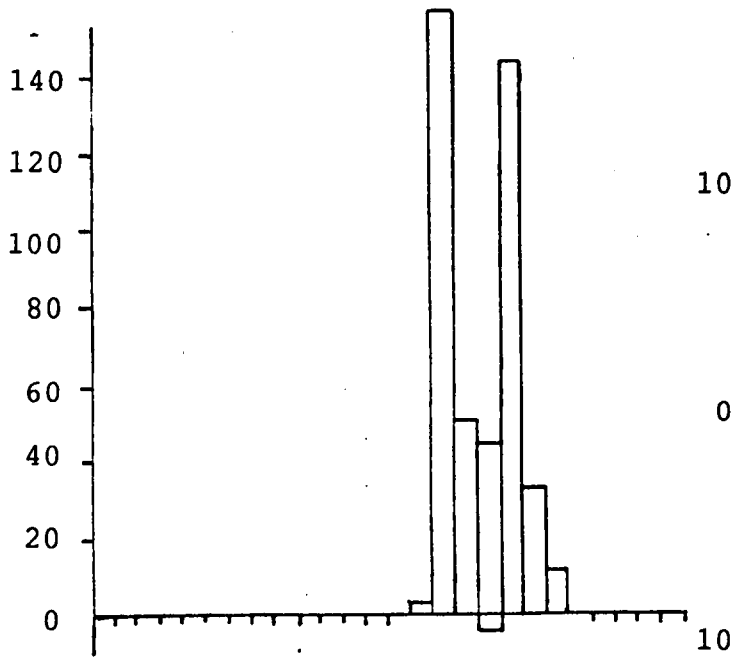
Rosse Grutto - *Limosa lapponica*  
 a- Zuid Holland & Zeeland  
 b- Noord Holland

Dwergmeeuw - *Larus minutus*  
 a- Zuid Holland & Zeeland  
 b- Noord Holland



Kokmeeuw - *Larus ridibundus*  
 a- Zuid Holland & Zeeland  
 b- Noord Holland

Stormmeeuw - *Larus canus*  
 a- Zuid Holland & Zeeland  
 b- Noord Holland



Noordse Stern/ Visdief -  
*Sterna paradisaea/hirundo*  
 a- Zuid Holland & Zeeland  
 b- Noord Holland

Grote Stern - *Sterna sandvicensis*  
 a- Zuid Holland & Zeeland  
 b- Noord Holland