

SHORT COMMUNICATIONS

***EPIGOMPHUS JANNYAE* SPEC. NOV., A NEW DRAGONFLY  
FROM PANAMA  
(ANISOPTERA: GOMPHIDAE)**

J. BELLE

Onder de Beumkes 35, NL-6883 HC Velp, The Netherlands

*Received and Accepted April 14, 1993*

The new sp. is described and illustrated on the basis of a unique ♂ (Panama: Coclé prov., Cerro Campana, alt. 2500 ft; 18-V-1979), deposited in FSCA, Gainesville.

INTRODUCTION

Thanks to the attention of Professor Dr Minter J. Westfall, Jr, Gainesville, I am able to introduce here a new taxon in *Epigomphus* from Panama. The material available consists of a unique adult male which is distinguished from the other congeners by a combination of the following three characters: (1) The pale antehumeral stripes are well connected with the pale mesothoracic "half collar" (Fig. 3); – (2) The rear of the head is bulged out near the upper edge of each compound eye (Fig. 2); – (3) The superior caudal appendages (cerci) are broad and vertically flattened (Figs 1, 4). In the present male the subtriangle of the fore wings is two-celled; this character is possibly also of specific value.

With feelings of sincere respect and in due appreciation for all her invaluable work done in behalf of our Societas Internationalis Odonatologica, I name this species in honour of the late lamented Professor Dr Janny M. van Brink.

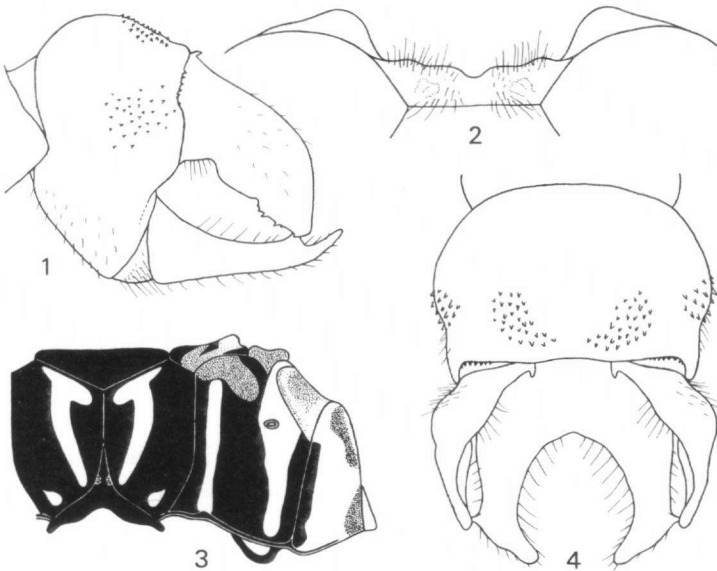
***EPIGOMPHUS JANNYAE* SPEC. NOV.**

Figures 1-4

**Material.** – **Holotype** ♂: Panamá: Coclé prov., Cerro Campana (Site No. 10), 18-V-1979, Dr K.W. Knopf leg.; deposited in FSCA, Gainesville.

**Etymology.** – *E. jannyae*: Dutch given name "Janny". Dedicated to the late Professor Dr Janny M. van Brink.

**MALE. — Head.** — Face predominantly brown. Base of mandibles grey. Labrum black along free border and with a symmetric pair of grey lateral spots. Superior surface of frons brown with a broad grey anterior band which is interrupted in middle. Vertex and crest of occiput brown, the latter with paired scars (Fig. 2). Rear of head brown above and brown-yellow on lateral sides. Rear of head bulged out near upper margin of compound eyes. Labium and adjacent mouth parts pale yellow.



Figs 1-4. *Epigomphus jannyae* spec. nov., ♂ holotype: (1) tenth abdominal segment and caudal appendages, left lateral view; — (2) rear of head, dorsal view; — (3) diagram of thoracic colour pattern; — (4) tenth abdominal segment and caudal appendages, dorsal view.

**Thorax.** — Dark colours brown. Middle lobe of prothorax with a yellow lateral spot on each side and a yellow twin-spot on middorsum. Colour design of pterothorax shaped as shown in the diagram. Middorsal carina yellow. First pale antehumeral stripe and mesothoracic "half collar" whitish. Second pale antehumeral stripe represented by only a whitish dorsal spot. Other pale colours of pterothorax yellow.

**Wings.** — Clear. Venation black-brown. Pterostigma dark brown. Basal subcostal cross-vein present in all wings. Nodal index 12:18-18:13/12:12-11:13. Second primary antenodal cross-vein the fifth in hind wings, the sixth in right forewing and the seventh in left forewing. Intermedian cross-veins 6-6/4-4. Num-

ber of cubito-anal cross-veins in addition to inner side of subtriangle in left forewing three, in right forewing four, and in either hindwing two. Supratrangles, subtriangles and discoidal triangles open, except for subtriangle in forewings and supratriangle in right hindwing which are two-celled.

**L e g s.** — Femora dark brown. Tibiae, tarsi and claws blackish brown. Outer anterior margin of third tibiae and first two joints of third tarsi with modified spines. First tibiae without lamina tibialis.

**A b d o m e n.** — Brown with pale markings as follows: segments 1 and 2 with yellow middorsal stripe and yellow sides except for area close behind auricles. Segment 3 with a yellow middorsal stripe and a yellow basal spot on each side, all these markings elongate and becoming narrower toward rear of segment. Segments 4 to 6 with a yellow basal spot on middorsum and on sides. Segment 7 yellow on basal half, the yellow basal part on lateral sides medially interrupted by a transverse brown stripe. Segment 8 with a small yellow basal spot on each side. Segment 9 entirely brown. Segment 10 largely brownish yellow. — Caudal appendages dark brown and shaped as shown in accompanying figures. Accessory genitalia of the usual type.

**M e a s u r e m e n t s** (in mm). — Total length 52; — abdomen (incl. app.) 39; — hind wing 34; — costal edge of pterostigma in forewing 3.6.

**FEMALE** unknown.