

**ABERRANT WING COLOURATION IN A  
*NEUROTHEMIS FLUCTUANS* (FABR.) MALE  
(ANISOPTERA: LIBELLULIDAE)**

*N. fluctuans* is distributed widely in SE Asia; in the plains and hills it is one of the most common dragonflies of the swamp, pond and slow running stream habitats. The brown wing markings in the male are one of the distinctive features of this species. The brown area in the forewing extends from wing base to close to pterostigma, whereas in the hindwing, at the costal side it reaches almost the same level as in the forewing, but at the margin it bends towards the wing base (Fig. 1a). In immature stage the spots are pale yellowish, becoming gradually darker with maturity (Fig. 1b). In the female, the wing colouration is variable: from almost colourless to such resembling the male (cf. F. RIS, 1911, *Collns zool. Selys Longchamps* 13: 566-569; S. ASAHINA, 1985, *Cho-cho* 8[9]: 31-33).

On May 2, 2001, I have captured an aberrantly coloured male at Pondok Tanjong, Perak, in peninsular Malaysia. Its forewing is similar to a typical male, but the hindwing colouration is much different. Only 2 or 3 costal cells are patchy brown, the remaining area of the standard spot being pale yellow. The colouration is symmetrical in both wings (Fig. 2). Judged from the darkness of the forewing spot, the individual appears rather mature. The other parts of its body, including the genitalia and anal appendages, are normal.

At the same spot and date there were many other individuals, all normal.

Mr KOICHIRO USHIJIMA accompanied me at the collecting trip and I am very thankful to Mr KIYOSHI INOUE for his helpful comments.

A. S a s a m o t o, 190-4 Yakuoji  
Tawaramoto-cho, Shiki-gun, Nara  
pref., 636-0341, Japan

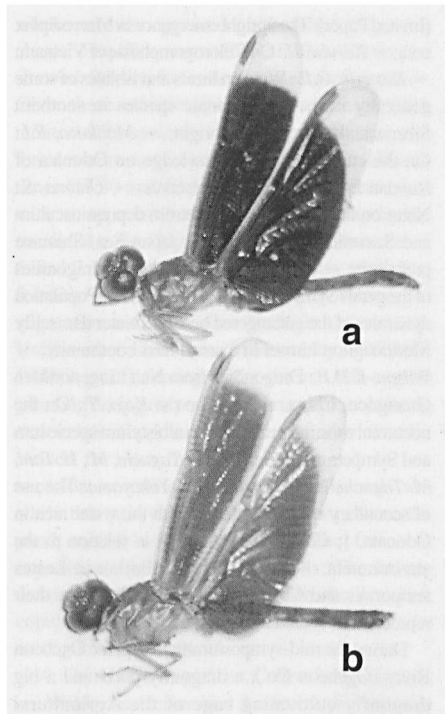


Fig. 1. male, normal colouration: (a) mature individual; – (b) immature individual.

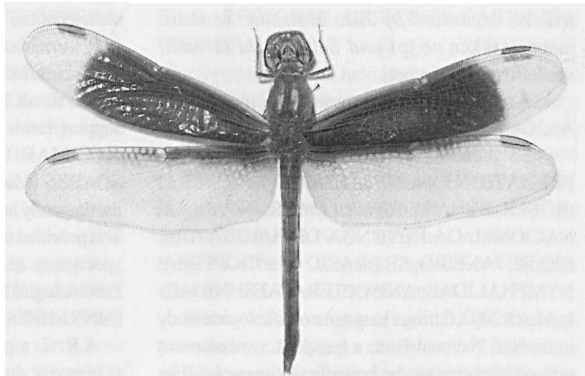


Fig. 2. *Neurothemis fluctuans*, male with an aberrant wing colouration.