

**Odostomia harveyi spec. nov. from the Northern Atlantic Ocean
(Gastropoda, Pyramidellidae)**

J.J. VAN AARTSEN

Adm. Helfrichlaan 33, 6952 GB Dieren, The Netherlands

& S.M. SMITH

Woodleigh, Townhead, Hayton, Carlisle, Cumbria CA4 9JH, England, U.K.

A new species of *Odostomia* from the Northern Atlantic Ocean is described as *O. harveyi* and compared with *O. electa* Jeffreys, 1883, and with *O. unidentata* (Montagu, 1803).

Key words: Gastropoda, Opisthobranchia, Pyramidellidae, *Odostomia*, taxonomy, Northern Atlantic Ocean.

Since the early 1970's, the marine laboratory at Dunstaffnage, Oban (Scotland, UK), now known as the Scottish Association for Marine Science, has been carrying out investigations west of Scotland and Ireland, particularly between the Wyville-Thomson Ridge and the Rockall Trough. Many hauls, by trawl, epibentic sledge or box-corer have been obtained, using R.V. Challenger. The specimens so obtained have been the subject for research papers and taxonomic works and, while many specimens are scattered amongst institutions, much material remained in Oban. Some of this was unsorted. Recently much of the material from the Wyville-Thomson Ridge was made available to Smith & Ian Killeen (SMS, IJK) for sorting, especially the Mollusca, in return for the resultant species lists. Subsequently, the bulk of all the animal material in Oban's stores from the Challenger investigations was donated to the National Museums of Scotland, and Smith, together with Killeen, have been engaged in sorting unsorted material and identifying, listing and curating the Mollusca. This work has produced a number of species additional to the British List (Smith & Heppell, 1991). We have obtained the *Odostomia* described here from several stations on and just south of the Wyville-Thomson Ridge.

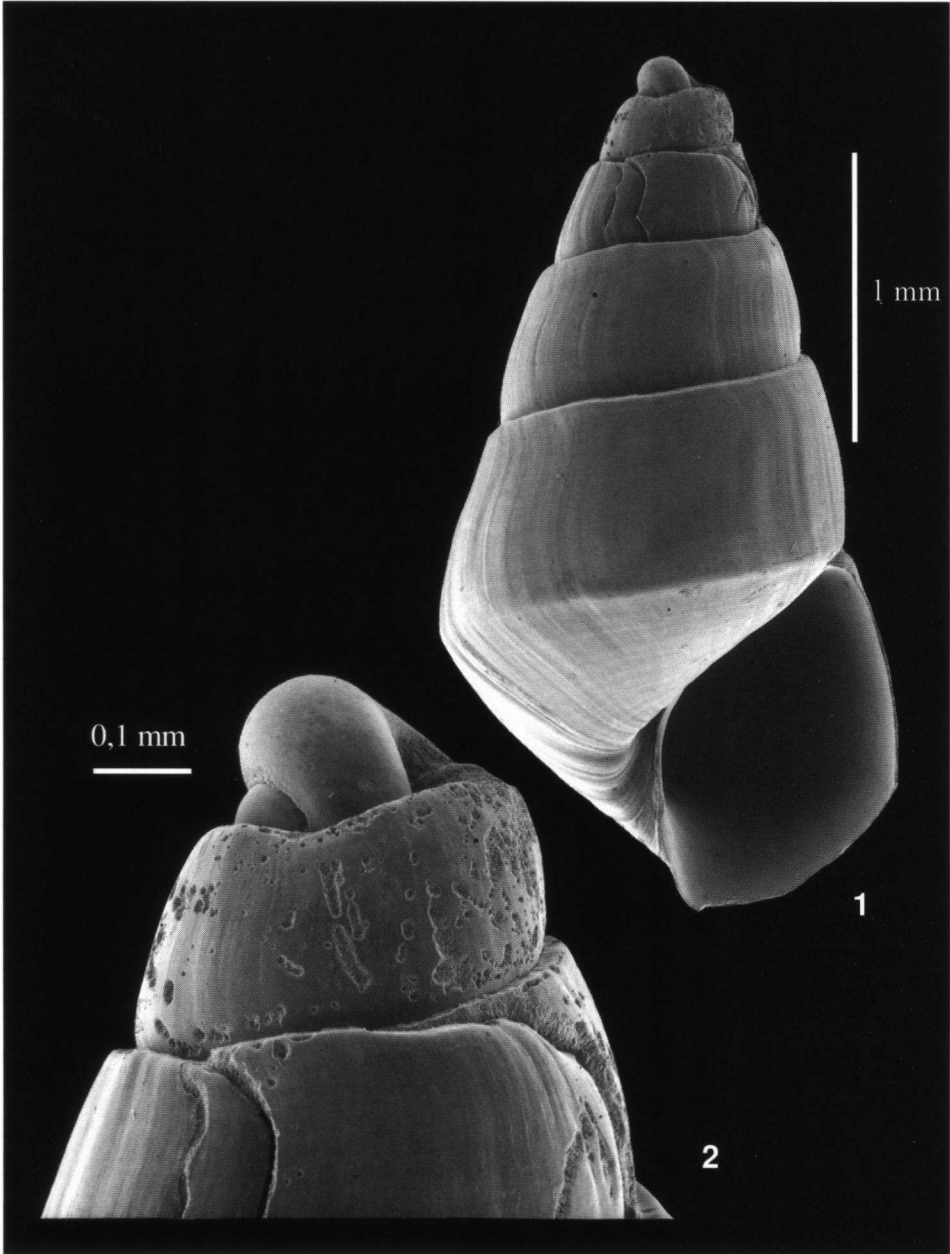
The species can be described as follows.

***Odostomia harveyi* spec. nov., figs. 1-2**

SHELL forming an elongated cone with straight sides. WHORLS: two to two and a half embryonic whorls, helicoid but for an appreciable part covered by the first teleconch-whorl. The total number of teleconch whorls is four to five. The last whorl is strongly carinate at the periphery. SCULPTURE: there is no sculpture on the whorls, only some very fine spiral structure can be detected. GROWTH-LINES: somewhat flexuous and about orthocone. MOUTH: rhomboidal, outer lip sharp, inner lip with umbilical chink. COLUMELLA: straight without a clearly defined tooth.

Locus typicus. — 59°43'N 12°33'W, -1270 m, 28-07-1983 (ES 250).

Types. — Holotype: 2.95 x 1.6 mm, in the National Museums of Scotland [NMSZ



Figs. 1-2. *Odostomia harveyi* n. sp., holotype (NMSZ 1994 128.13501).

1994128.13501]. Paratypes: specimens have been obtained from the following localities: 60°12'N 08°14'W, -900m, 3-07-1976 [SMG 72A] (3 specimens); 60°10'N 08°14'W, -900m, 3-07-1976 [SMG 72B] (2 specimens); 60°10'N 08°12'W, -900m, 3-07-1976 [SMG 73] (6 fragments) and from the type locality (5 specimens + 3 alive!). One paratype is kept in the Nationaal Natuurhistorisch Museum, Leiden [NNM 57232], 1 paratype in the collection Van Aartsen [AD 28098], both from the type locality. Other paratypes are in the reference collection at Oban and in the private collections of Smith and Killeen.

Derivatio nominis. — The species is named after Robin Harvey, Scottish Association for Marine Science, Oban.

Odostomia harveyi looks much like *Odostomia unidentata* (Montagu, 1803), but differs in the embryonic whorls, which are completely free in *O. unidentata*, as well as in the direction of the growth-lines (orthocline versus clearly prosocline) and the absence of a columellar tooth, which is prominently present in *O. unidentata*.

Odostomia harveyi also differs from *Odostomia electa* Jeffreys, 1883, an arctic-boreal species of which only the holotype is known (figured by Van Aartsen, 1987: 13 pl. 31 fig. 29). As can be seen from this figure the whorls of *O. electa* are much more convex compared with *O. harveyi*, the embryonic whorls are intorted and the growth-lines are clearly prosocline. On this basis *O. electa* is considered one of the many forms of *Odostomia eulimoides* Hanley, 1844.

It should be noted that the embryonic whorls are sometimes even more embedded in the first teleconch whorl, so that the topwhorls seem nearly intorted. Still, because of the characteristic form and other characters there is no doubt that all paratypes belong to the same species.

We are grateful to the Scottish Association for Marine Science in making this material available to us, and especially to Robin Harvey who has done much of the organisation of the transferal of specimens from Oban. We also thank Jeroen Goud (NNM, Leiden) for preparing the SEM photographs.

REFERENCES

- AARTSEN, J.J. VAN, 1987. European Pyramidellidae: III. *Odostomia*. — *Boll. malac.* 23: 1-34.
SMITH, S.M., & D. HEPPELL, 1991. Checklist of British marine Mollusca. — *Natn. Mus. Scotland, Inf. Ser.* 11: 1-114.